

RECEPTACLE

3	H
2	GI
1	H

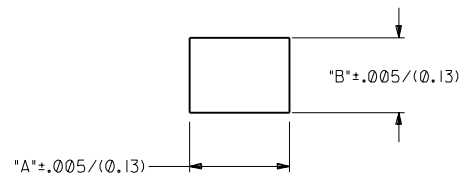
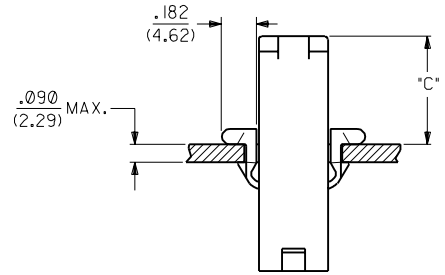
DIMENSIONS SHOWN (METRIC) INCH UNLESS OTHERWISE SPECIFIED TOLERANCES ANGULAR $\pm .01$		▽ = 0 ▼ = 0		REVISE ONLY ON CAD SYSTEM									
<table border="1"> <tr> <th>INCH</th> <th>METRIC</th> </tr> <tr> <td>3 PLACE $\pm .007$</td> <td>---</td> </tr> <tr> <td>2 PLACE $\pm .010$</td> <td>± 0.18</td> </tr> <tr> <td>1 PLACE ---</td> <td>± 0.25</td> </tr> </table>		INCH	METRIC	3 PLACE $\pm .007$	---	2 PLACE $\pm .010$	± 0.18	1 PLACE ---	± 0.25	TITLE 125/(3.17) HOUSING, PLUG AND RECEPTACLE, I C K T.		SHEET NO. DATE 1 OF 3 5 / 5/88	
INCH	METRIC												
3 PLACE $\pm .007$	---												
2 PLACE $\pm .010$	± 0.18												
1 PLACE ---	± 0.25												
DRAFT WHERE APPLICABLE MUST REMAIN WITHIN DIMENSIONS		MOLEX INCORPORATED L15LE,ILL. 60532 U.S.A.		PART NO. DRWG. NO. SD-42179-1									
DRWG. BY: GEP CHK'D: RW APP'D: RAS SCALE: 2 : 1		FILE NAME: S42179.IX1 DATE: 05/05/88		THIS DRAWING CONTAINS INFORMATION THAT IS PROPRIETARY TO MOLEX INC. AND SHOULD NOT BE USED WITHOUT WRITTEN PERMISSION.									

I	OBSOLETE P/N'S UCR2002-0270 COMERC1 01/9/18
H	ADD COLOR EDP'S UCR1999-0027 WANG 98-07-21
GI	REVISED UCR1998-0128 WANG 98-04-07
G	REV RAMP WIDTH ECN U2-1785 AFG 92-12-17 RW
F	DEL 94V-0 MAT'L ECR U2-1699 AFG 92-11-20 RW
E	REVISE PER ECR U2 0211 GEC 2/10/92 RW
D2	RELEASE - IP/IRD ECN #U11845 9-5-91 RW
D1	ADD EDP NO'S PER ERO 30602 GEC 11/6/90 RW
D	REVISED PER ECR #U00189 7-5-90 TRM
C	REVISED PER ECR #U90011 KBW 03-31-89 RW
B	REV. PICTORALLY GEP 12-15-88 RW
A	REV. & FINAL REL. ERO 27381 GEP 10-18-88 RW
I	*X REL PER ERO 25874 GEP 3-28-88 RW

42179

PLUG		
PART NO.	ENG. NO.	
03-12-2016	42179-IP1	
03-12-2015	42179-IP	
03-12-7014	42179-IPRD	
03-12-7015	42179-IPBU	OBSOLETE
03-12-7016	42179-IPIRD	
03-12-2071	42179-IPIBK	OBSOLETE
03-12-2072	42179-IPIGN	OBSOLETE
03-12-2073	42179-IPYW	OBSOLETE
03-12-2074	42179-IPIBU	OBSOLETE
03-12-2075	42179-IPIGY	OBSOLETE

RECEPTACLE		
PART NO.	ENG. NO.	
03-12-1016	42179-IR1	
03-12-6014	42179-IRIRD	
03-12-6015	42179-IRIBU	OBSOLETE
03-12-2081	42179-IRIBK	OBSOLETE
03-12-2082	42179-IRIGN	OBSOLETE
03-12-2083	42179-IRYW	OBSOLETE
03-12-2084	42179-IRIGY	OBSOLETE



HOUSING	DIM. "A"	DIM. "B"	DIM. "C"
PLUG	.521/(13.23)	.440/(11.18)	.55/(14.0)

NOTES:

- PART ACCEPTS A MAXIMUM .250/(6.35) INSULATION DIA.
- FOR USE WITH MOLEX .125/(3.17) DIAMETER SERIES TERMINALS EXCEPT THE I219/I220 SERIES.

LEGEND:

42179-|*-*-*

CIRCUIT SIZE: _____

HOUSING TYPE: _____

P = PLUG

R = RECEPTACLE

MOUNTING EAR OPTION: _____

BLANK = WITH PREBENT EARS, PLUG ONLY

I = WITHOUT EARS

COLOR: _____

BLANK = 94V-2; TRANSLUCENT NATURAL COLOR

AM=AMBER BK=BLACK BU=BLUE

BN=BROWN GY=GRAY GN=GREEN

OR=ORANGE RD=RED YW=YELLOW

MATERIAL: _____

BLANK = NYLON 6/6, U.L. 94V-2

REV.	BY	CHK'D.	DATE
I	SEE SHEET I	D	SEE SHEET I
H	SEE SHEET I	C	SEE SHEET I
GI	SEE SHEET I	B	SEE SHEET I
G	SEE SHEET I	A	SEE SHEET I
F	SEE SHEET I	I	SEE SHEET I
LTR.	REVISIONS	LTR.	REVISIONS

DIMENSIONS SHOWN (METRIC) INCH	
UNLESS OTHERWISE SPECIFIED TOLERANCES ANGULAR ± 10°	
3 PLACE ± .007	---
2 PLACE ± .010	± 0.18
1 PLACE ---	± 0.25
DRAFT WHERE APPLICABLE MUST REMAIN WITHIN DIMENSIONS	
DRWG. BY: CEP	CHK'D. BY: RW
APP'D. BY: RAS	SCALE: 2 : 1

▽ = 0	▼ = 0	REVISE ONLY ON CAD SYSTEM
TITLE .125/(3.17) HOUSINGS, PLUG AND RECEPTACLE, I C K T.		
MOLEX INCORPORATED L15LE,ILL. 60532 U.S.A.	SHEET NO. 3	DATE 5/6/88
PART NO. SD-42179-1*	SEE CHART	
FILE NAME: S42179.IX3	THIS DRAWING CONTAINS INFORMATION THAT IS PROPRIETARY TO MOLEX INC. AND SHOULD NOT BE USED WITHOUT WRITTEN PERMISSION.	DIV. CP

42179