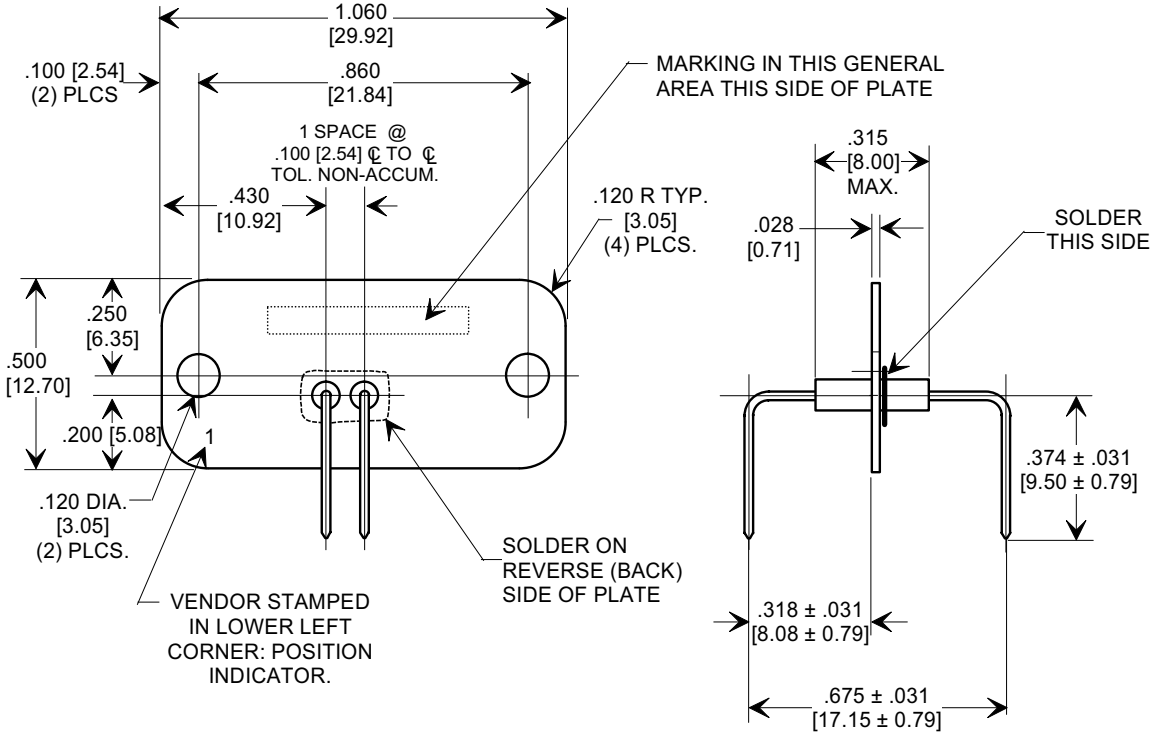
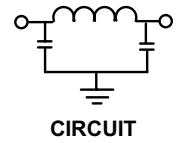
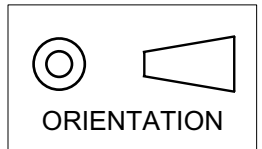


MARKETING SALES DRAWING

DIMENSIONS IN INCHES - DO NOT SCALE THIS DRAWING  
 DIMENSIONS IN METRIC - [ ]

Electrical Testing  
 per Tusonix standard  
 test plans and Mil-Std-202  
 Test Methods.



NOTE:

- MATERIALS:  
 PLATE: .028" ± .003 [0.71 ± 0.08] COPPER ALLOY, MATTE TIN FINISH.  
 LEADS: .025" ± .002 [0.63 ± 0.05] DIA. COPPER ALLOY, GOLD OVER NICKEL FINISH.
- MARKING TO BE TUSONIX TRADEMARK, PART NUMBER AND DATE CODE.

Cx (pF)	WVDC (+125°C)	IR (MIN.)	CURRENT I <sub>dc</sub> (A)	DWV	TYPICAL NO LOAD INSERTION LOSS @ 25°C (dB) PER MIL-STD-220					
					20 MHz	50 MHz	100 MHz	200 MHz	500 MHz	1 GHz
820 +80% -20%	100	10 GΩ	5	250 VDC	3	13	22	30	42	50

REVISION RECORD Original Release C.O. WAS SK 8096-000 L.E. 07-26-02 20020724-1-02 0	--TOLERANCES-- Unless Otherwise Specified		Title <b>FILTER PLATE 2 POSITION</b>	
	DECIMAL ± .010 [0.25]		Drawn S.M. 07-18-02 Scale 2 X	
	ANGLES ±		Approved T.C. 07-18-02	
	<b>TUSONIX</b> TUCSON, ARIZONA		<b>A</b>	<b>7302-020</b>

X-2015 Rev-0