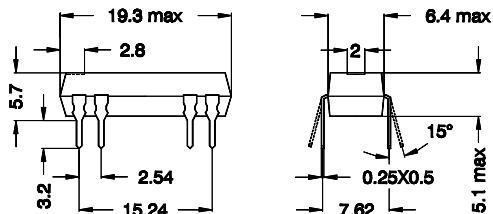
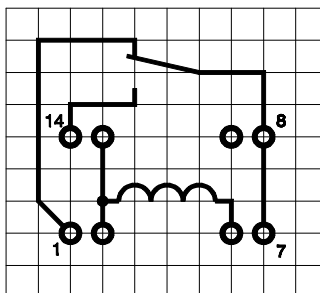


dimensions (tolerance $\pm 0,1\text{mm}$)



layout 52 L pitch 2,54 / top view



marking

Type
data-code EN 60062

MEDER electronic
DIP24-1C90-52L

| coil data | condition | Min. | Typ. | Max. | unit |
|------------------|---|------|------|------|----------|
| coil resistance | at 20°C | 1800 | | 2200 | Ω |
| nominal voltage | | | 24 | | VDC |
| pull-in voltage | | | | 16,8 | VDC |
| drop-out voltage | | 3,6 | | | VDC |
| coil voltage | at 20°C | | | 44,0 | VDC |
| coil voltage | at 60°C | | | 28,5 | VDC |
| nominal power | determined with nominal voltage and rated current | | 288 | | mW |

| contact data 90 (Form C/Dry) | | | | | |
|------------------------------|---|--------|--|---------|------------|
| contact material | | | | Rhodium | |
| rated power | each combination of the switching voltage and current must not exceed the given rated power | | | 3 | W |
| switching voltage | | | | 175 | VDC |
| switching current | | | | 0,25 | A |
| carry current | | | | 1,2 | A |
| static contact resistance | initial values measured with $1,4 \times AT_{\text{pull-in}}$ | | | 150 | m Ω |
| Insulation resistance | RH Ω 45% | 10^9 | | | Ω |
| breakdown voltage | | 200 | | | VDC |
| capacitance | without test coil | | | 1,0 | pF |

| relay data | | | | | |
|------------------------------------|--|-----------|-----|----|----------|
| insulation resistance coil-contact | | 10^{11} | | | Ω |
| insulation voltage coil-contact | | 1,5 | | | kVDC |
| shock | $\frac{1}{2}$ sine wave, duration 11ms | | | 50 | g |
| vibration | 50 – 2000Hz | | | 30 | g |
| operate time including bounce | measured at $1,4 \times AT_{\text{pull-in}}$ | | 0,7 | | ms |
| release time | | | 1,0 | | ms |

| general data | | | | | |
|-----------------------|------------|-----|--|----------------------|----|
| operating temperature | | -20 | | 70 | °C |
| storing temperature | | -35 | | 95 | °C |
| soldering temperature | 10 sec. at | | | 260 | °C |
| cleaning | | | | fully sealed | |
| material of case | | | | mineral-filled epoxy | |
| material of pins | | | | Cu-alloy tinned | |