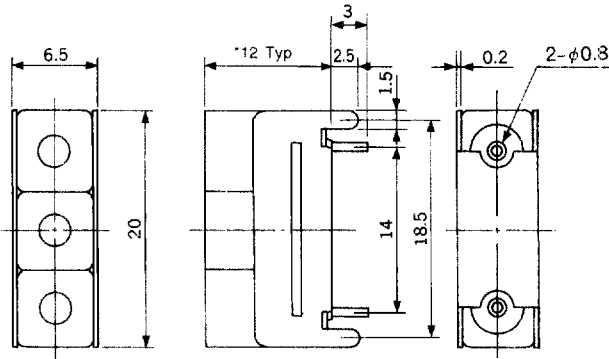


TYPE 6DFB (3 Pole Type)

Frequency Range: 800-1700MHz

Temperature Range: -25°C to +85°C



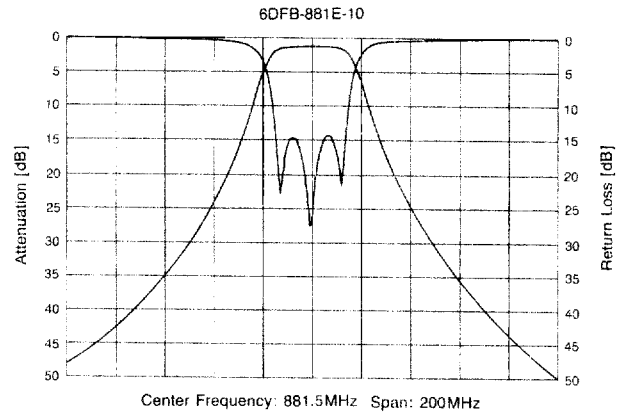
* Depends on center frequency

(Unit: mm)

Measurement values: 6DFB-881E-10

Passband Insertion Loss	1.51dB Max.
Passband Ripple	0.37dB
Passband V.S.W.R.	1.48 Max.
Attenuation	
at 849MHz	18.5dB
at 914MHz	18.7dB

Characteristics



STANDARD DEVICES SELECTION GUIDE

The Part Numbers shown in the table below are standard devices which are readily available. TOKO will design and manufacture modified and custom devices with specific characteristics to meet your requirements. If you do not find the device for your application in this catalog, please contact our sales office or representative office.

TYPE 6DFB: 3 Pole Designs

TOKO Part Number	Center Freq. (MHz)	Bandwidth (Fo±MHz)	Insertion Loss (dB max.)	Ripple in BW (dB max.)	V.S.W.R. in BW (max.)	Selectivity dB min. @ MHz	Application
6DFB-836E-10	836.5	±12.5	2.0	0.8	2.0	12 (Fo±32.5)	Cellular—AMPS
6DFB-881E-10	881.5	±12.5	2.0	0.8	2.0	12 (Fo±32.5)	Cellular—AMPS
6DFB-888G-10	888.5	±16.5	2.5	0.8	2.0	6 (Fo±28.5)	Cellular—TACS
6DFB-933G-10	933.5	±16.5	2.5	0.8	2.0	6 (Fo±28.5)	Cellular—TACS
6DFB-902E-10	902.5	±12.5	2.0	0.8	2.0	12 (Fo±32.5)	Cellular—NMT/GSM
6DFB-947E-10	947.5	±12.5	2.0	0.8	2.0	12 (Fo±32.5)	Cellular—NMT/GSM
6DFB-915E-10	915.0	±13.0	2.0	0.8	2.0	12 (Fo±32.5)	Spread Spectrum
6DFB-866A-10	866.0	± 2.0	4.5	1.0	2.0	20 (Fo±16)	CT2
6DFB-886A-10	886.0	± 1.0	4.0	0.5	2.0	45, 50 (Fo-45, +45)	Cordless Phone
6DFB-931A-10	931.0	± 1.0	4.0	0.5	2.0	45, 50 (Fo-45, +45)	Cordless Phone
6DFB-914A-10	914.5	± 0.5	4.0	0.5	2.0	45, 50 (Fo-45, +45)	Cordless Phone
6DFB-959A-10	959.5	± 0.5	4.0	0.5	2.0	45, 50 (Fo-45, +45)	Cordless Phone
6DFB-1575B-10	1575.4	± 5.0	3.0	1.0	2.0	18 (Fo±50)	GPS Receiver
6DFB-1544F-10	1544.5	±14.5	3.0	1.0	2.0	20, 30 (Fo-64, +82.5)	INMARSAT
6DFB-1643G-11	1643.5	±17.0	3.0	1.0	2.0	23, 37 (Fo-67, +108)	INMARSAT