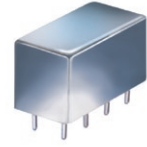


# Plug-In, Low Noise Active Mixer

## UNCL-L1+ UNCL-L1

Level -4 (LO Power -4 dBm) 10 to 500 MHz



CASE STYLE: A01  
PRICE: \$28.20 ea. QTY (1-9)

+ RoHS compliant in accordance  
with EU Directive (2002/95/EC)

The +Suffix identifies RoHS Compliance. See our web site  
for RoHS Compliance methodologies and qualifications.

### Maximum Ratings

Operating Temperature	-55°C to 100°C
Storage Temperature	-55°C to 100°C
RF Power	50mW
IF Current	40mA

Permanent damage may occur if any of these limits are exceeded.

### Pin Connections

LO	1
RF	7
IF	8
DC	4
GROUND	3,5,6
CASE GROUND	3,5,6
NOT USED	2

### Features

- excellent conversion loss, 5.73 dB typ.
- good L-R isolation, 35 dB typ., L-I isolation, 23 dB typ.
- rugged welded construction
- hermetically sealed
- protected by U.S Patent 6,943,629

### Applications

- VHF/UHF
- transmitters

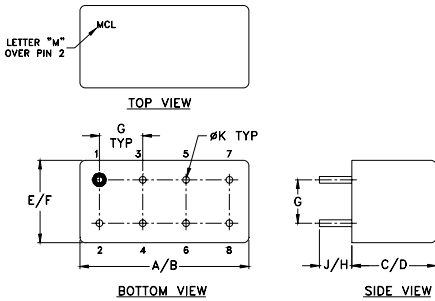
### Electrical Specifications

FREQUENCY (MHz)		CONVERSION LOSS (dB)				LO-RF ISOLATION (dB)						LO-IF ISOLATION (dB)						INPUT POWER (dBm) 1 dB Compr.	DC POWER	
LO/RF	IF	Mid-Band m			Total Range Max.	L		M		U		L		M		U		Typ.	Current (mA)	
$f_L$ - $f_U$		$\bar{X}$	$\sigma$	Max.		Typ.	Min.	Typ.	Min.	Typ.	Min.	Typ.	Min.	Typ.	Min.	Typ.	Min.	Typ.	Volt	
10-500	DC-500	5.73	0.08	8.0	8.5	45	30	35	20	25	17	32	20	23	15	18	12	1	12	35

Up to 1 dBm typ.

L = low range [ $f_L$  to  $10 f_L$ ] M = mid range [ $10 f_L$  to  $f_U/2$ ] U = upper range [ $f_U/2$  to  $f_U$ ]  
m = mid band [ $2f_L$  to  $f_U/2$ ]

### Outline Drawing



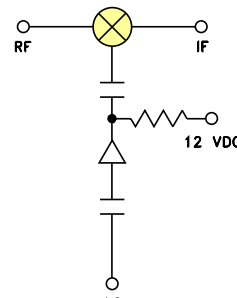
### Outline Dimensions (inch mm)

A	B	C	D	E	F
.770	.800	.385	.400	.370	.400
19.56	20.32	9.78	10.16	9.40	10.16
G	H	J	K		wt
.200	.20	.14	.031		grams
5.08	5.08	3.56	0.79		5.2

### Typical Performance Data

Frequency (MHz)		Conversion Loss (dB)	Isolation L-R (dB)	Isolation L-I (dB)	VSWR RF Port (-1)	VSWR LO Port (-1)
RF	LO	LO -4dBm	LO -4dBm	LO -4dBm	LO -4dBm	LO -4dBm
10.00	40.00	5.70	62.39	50.19	1.11	1.43
20.00	50.00	5.67	57.15	44.63	1.07	1.34
50.00	80.00	5.70	49.25	36.60	1.06	1.39
53.24	83.24	5.70	48.94	36.12	1.06	1.39
96.47	66.47	5.69	44.45	31.86	1.05	1.49
100.00	70.00	5.69	44.16	31.79	1.06	1.50
139.71	109.71	5.68	42.08	29.24	1.07	1.62
182.94	152.94	5.68	39.66	26.97	1.09	1.81
200.00	170.00	5.70	38.64	26.20	1.10	1.87
226.18	196.18	5.69	37.39	25.18	1.11	1.97
240.59	210.59	5.70	37.10	24.79	1.13	2.03
250.00	220.00	5.70	36.64	24.38	1.13	2.06
269.41	239.41	5.69	35.64	23.95	1.14	2.15
312.65	282.65	5.71	34.48	23.15	1.17	2.26
355.88	325.88	5.70	33.01	22.80	1.21	2.36
399.12	369.12	5.74	32.87	23.17	1.25	2.43
442.35	412.35	5.72	32.64	23.55	1.30	2.46
471.18	441.18	5.77	30.96	25.05	1.34	2.48
485.59	455.59	5.77	30.40	25.57	1.36	2.48
500.00	470.00	5.77	29.18	26.74	1.38	2.48

### Electrical Schematic



**Mini-Circuits**  
ISO 9001 ISO 14001 AS 9100 CERTIFIED

For detailed performance specs  
& shopping online see web site

P.O. Box 350166, Brooklyn, New York 11235-0003 (718) 934-4500 Fax (718) 332-4661 The Design Engineers Search Engine [www.minicircuits.com](http://www.minicircuits.com) Provides ACTUAL Data Instantly at [minicircuits.com](http://minicircuits.com)

IF/RF MICROWAVE COMPONENTS

Notes: 1. Performance and quality attributes and conditions not expressly stated in this specification sheet are intended to be excluded and do not form a part of this specification sheet. 2. Electrical specifications and performance data contained herein are based on Mini-Circuits' applicable established test performance criteria and measurement instructions. 3. The parts covered by this specification sheet are subject to Mini-Circuits' standard limited warranty and terms and conditions (collectively, "Standard Terms"); Purchasers of this part are entitled to the rights and benefits contained therein. For a full statement of the Standard Terms and the exclusive rights and remedies thereunder, please visit Mini-Circuits' website at [www.minicircuits.com/MCLStore/terms.jsp](http://www.minicircuits.com/MCLStore/terms.jsp).

REV. A  
M107729  
UNCL-L1  
DJ/TD/CP/AM  
100225  
Page 1 of 2

