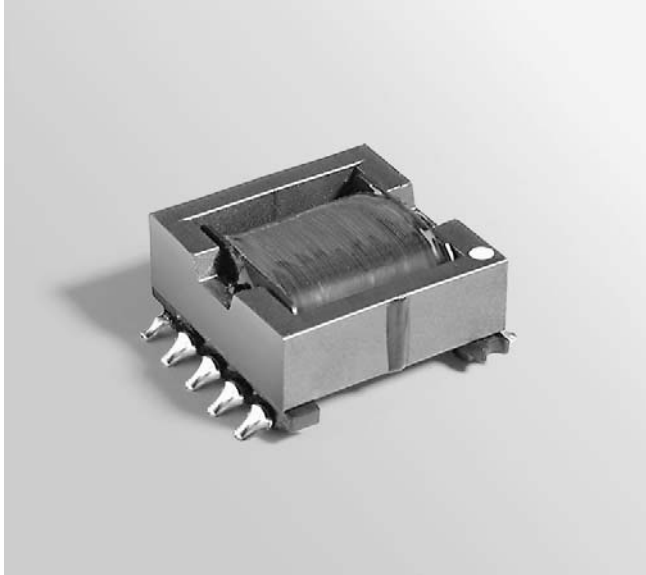


Output Choke Inductors

For National Semiconductor
LM5030 Controller IC



These low-profile inductors are designed specifically for the National Semiconductor LM5030 Push-Pull Current Mode PWM Controllers. The 33 Watt design specifies our A9785-B, the 35 Watt design uses the A0153-A and the 60 Watt design uses the B0414-A.

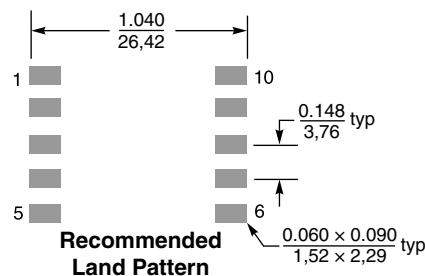
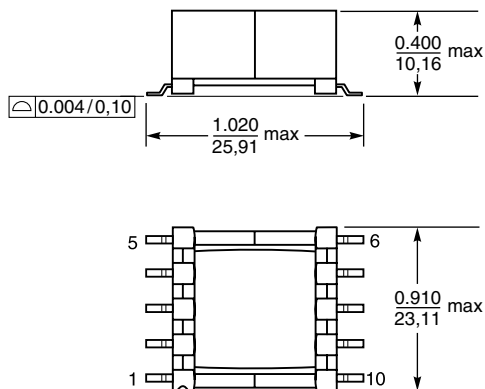
They are the output chokes for Coilcraft's planar transformers (A9784-B, A0152-A and B0310-A). The auxiliary winding controls the input current to the PWM.

The National Semiconductor design also specifies Coilcraft's MSS6132-103 power inductor for the input choke. Refer to separate data sheets for additional information on these Coilcraft parts.

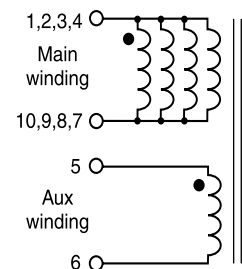
Request free evaluation samples by contacting Coilcraft or visiting www.coilcraft.com.

Part number	Power (W)	Inductance ¹ at 0 Adc ±10% (µH)	Inductance ¹ ±10% (µH)	DCR max (Ohms)		Isolation (V)	Isat ² (A)	Irms ³ (A)
				Main winding	Aux winding			
A9785-B	33	7.0	6.71 @ 12.0 Adc	0.0066	1.95	1500	15.0	12.5
A0153-A	35	7.0	6.20 @ 10.0 Adc	0.0066	1.32	1500	14.5	12.5
B0414-A	60	13.8	13.80 @ 5.0 Adc	0.0098	0.68	1500	8.0	9.5

1. Inductance measured at 10.0 kHz, 0.1 Vrms.
2. DC current at which inductance drops 12% (typ) from its value without current.
3. Average current for a 40°C rise from 25°C ambient.
4. Operating temperature range -40°C to +85°C.
5. Electrical specifications at 25°C.



Schematic



Tape and reel: 200/13" 44 mm tape width

Coilcraft®

Specifications subject to change without notice.

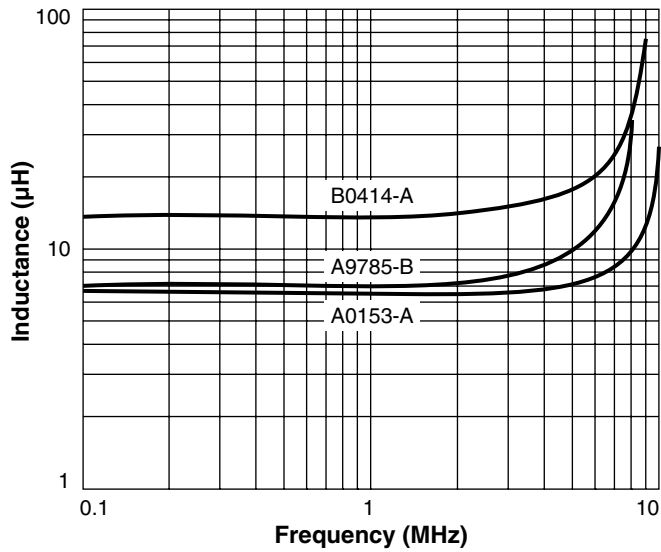
Please check our website for latest information. Document 301-1 Revised 01/28/05

1102 Silver Lake Road Cary, Illinois 60013 Phone 847/639-6400 Fax 847/639-1469

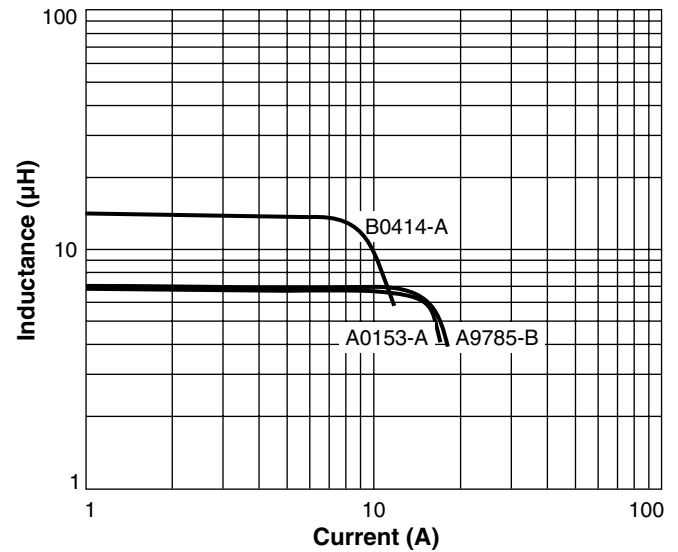
E-mail info@coilcraft.com Web <http://www.coilcraft.com>

Output Choke Inductors for LM5030 IC

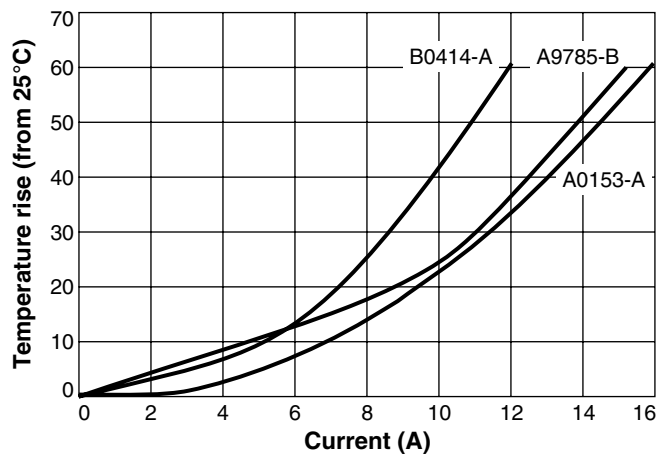
Typical L vs Frequency



Typical L vs Current



Typical Temperature Rise vs Current



Specifications subject to change without notice.
Please check our website for latest information. Document 301-2 Revised 01/28/05

1102 Silver Lake Road Cary, Illinois 60013 Phone 847/639-6400 Fax 847/639-1469

E-mail info@coilcraft.com Web <http://www.coilcraft.com>