

# LED DISPLAY

## BAR GRAPH & ARRAY

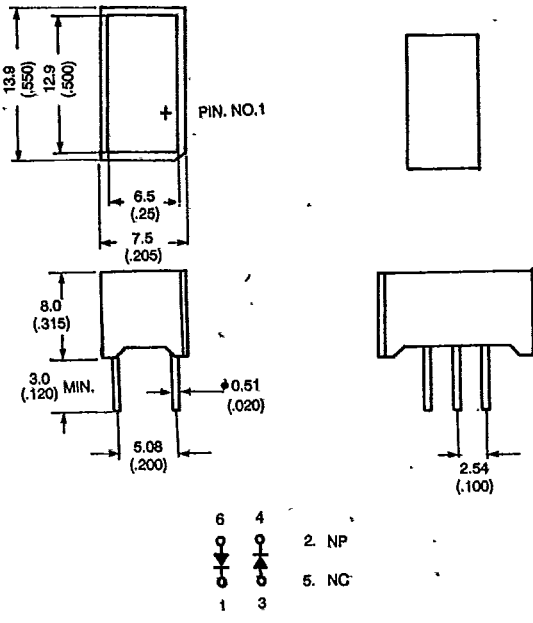
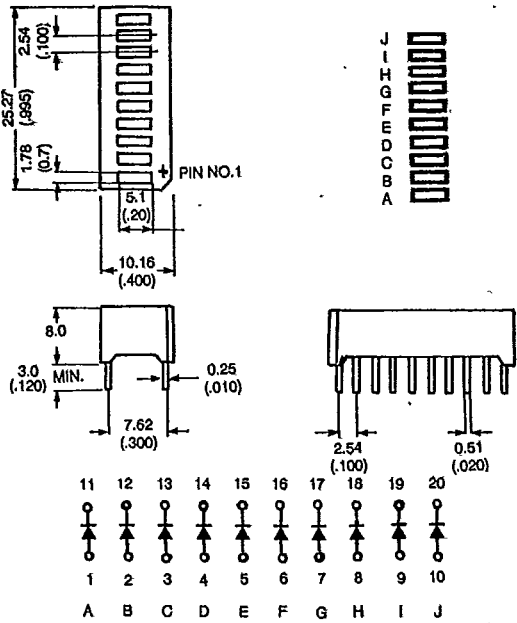
Digit Size	Part No.		Emitted Color	Peak Wave Length $\lambda_p$ (nm)	Absolute Maximum Ratings				Electro-Optical Data (At 10 mA)			Drawing No.
	Common Anode	Common Cathode			$\Delta\lambda$ (nm)	Pd (mw)	If (mA)	Peak If (mA)	Vf (V)		Iv Typ. Per Seg. (mcd)	
									Typ.	Max.		
6.5X 12.9mm. LIGHT BAR	BA-10R1UD		Red	655	40	110	40	200	1.7	2.0	0.7	A-01
	BA-10H1UD		Bright Red	700	90	50	15	50	2.1	2.6	4.0	
	BA-10G1UD		Green	568	30	100	30	150	2.1	2.6	2.4	
	BA-10Y1UD		Yellow	585	35	90	30	150	2.1	2.6	2.3	
	BA-10E1UD		HI-Eff Red Orange	635	45	80	30	150	2.0	2.6	2.4	
	BA-10S1UD		Super Red	660	20	60	20	150	1.7	2.6	4.2	
10 BAR GRAPH ARRAY	BA-2H2UW		Bright Red	700	90	50	15	50	2.1	2.6	2.0	A-02
	BA-2G2UW		Green	568	30	100	30	150	2.1	2.6	4.8	
	BA-2Y2UW		Yellow	585	35	90	30	150	2.1	2.6	4.6	
	BA-2E2UW		HI-Eff Red Orange	635	45	80	30	150	2.0	2.6	4.8	
	BA-2S2UW		Super Red	660	20	60	20	150	1.7	2.6	8.4	

Remark: • The average luminous intensity is obtained by summing the luminous intensity of each segment and dividing by total number of segments.  
 • Above part numbers are all with black surface and white segment. For part numbers with other surface and segment color combinations, please check the selection guide (Part number system).



### A-01 BA-10x1UD Series

### A-02 BA-2x2UW Series



### PACKAGE DIMENSIONS

- NOTES:  
 1. All dimensions are in millimeters (inches).  
 2. Tolerance is  $\pm 0.25$ mm ( $\pm 0.010$ "\*) unless otherwise specified.  
 3. Specifications are subject to change without notice.