

**PLEASE CHECK WWW.MOLEX.COM FOR LATEST PART INFORMATION**

**Part Number:** **0546977001**  
**Status:** **Active**  
**Description:** 0.80mm (.031") Pitch S.O. DIMM Socket, Right Angle, Surface Mount, 4.00mm (.157") Mounted Height, 144 Circuits, 5.0V Power Supply, Lead-free

**Documents:**

[3D Model](#) [Product Specification PS-54697-003 \(PDF\)](#)  
[Drawing \(PDF\)](#) [RoHS Certificate of Compliance \(PDF\)](#)

**General**

Product Family	Memory Module Sockets
Series	<u>54697</u>
Comments	5.0V Power Supply
Component Type	Memory Module
JEDEC Outline	N/A
Product Name	S.O. DIMM

**Physical**

Circuits (Loaded)	144
Color - Resin	Natural
Durability (mating cycles max)	30
Entry Angle	90° Angle (Side Entry)
Keying to Mating Part	Yes
Material - Metal	Brass, Phosphor Bronze
Material - Plating Mating	Gold
Material - Plating Termination	Tin
Material - Resin	High Temperature Thermoplastic
PCB Retention	Yes
PCB Thickness Recommended (in)	0.045 In
PCB Thickness Recommended (mm)	1.20 mm
Packaging Type	Tray
Pitch - Mating Interface (in)	0.031 In
Pitch - Mating Interface (mm)	0.80 mm
Plating min: Mating (µin)	10
Plating min: Mating (µm)	0.25
Plating min: Termination (µin)	40
Plating min: Termination (µm)	1
Temperature Range - Operating	-55°C to +85°C
Termination Interface: Style	Surface Mount

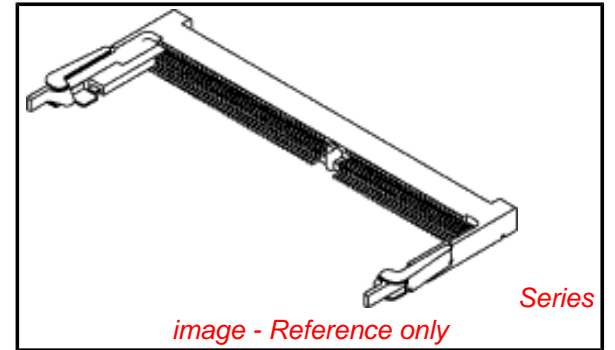
**Electrical**

Current - Maximum per Contact	0.3A
Voltage - Maximum	100V
Voltage Key	5.0V

**Material Info**

**Reference - Drawing Numbers**

Product Specification	PS-54697-003, RPS-54697-006
Sales Drawing	SD-54697-004



*image - Reference only*

**EU RoHS**

**ELV and RoHS  
Compliant**

**REACH SVHC**

Not Reviewed

**Halogen-Free**

Status

**Not Reviewed**

**China RoHS**



**Need more information on product  
environmental compliance?**

Email [productcompliance@molex.com](mailto:productcompliance@molex.com)  
 For a multiple part number RoHS Certificate of Compliance, [click here](#)

Please visit the [Contact Us](#) section for any non-product compliance questions.

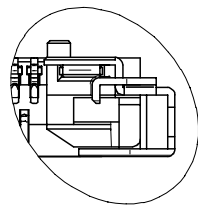
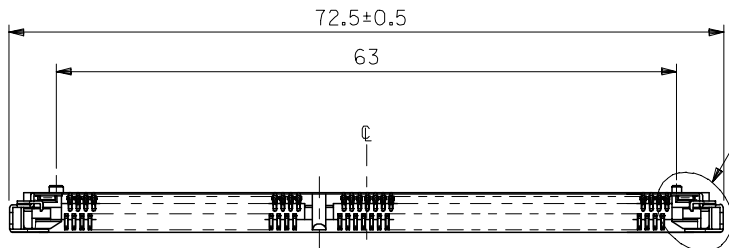
**Search Parts in this Series**

54697Series

**Mates With**

JEDEC Standard DRAM and SDRAM modules

10 9 8 7 6 5 4 3 2 1



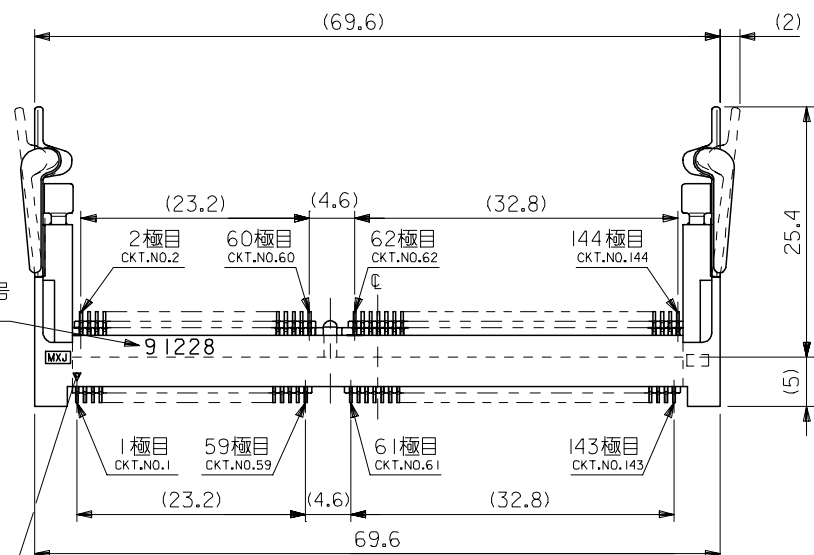
詳細 D  
DETAIL D  
SCALE 5:1

注記 1. 材料 ハウジング : ガラス入り耐熱樹脂、白色、UL94V-0  
MATERIAL HOUSING : G.F. HEAT RESISTANT PLASTIC, WHITE, UL94V-0  
ターミナル : 燐青銅  
TERMINAL : PHOSPHOR BRONZE  
ネイル : 黄銅  
NAIL : BRASS

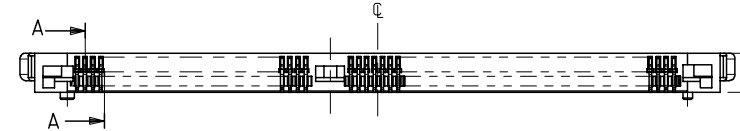
2. めっき仕様  
PLATING  
ロングターミナル  
LONG TERMINAL  
接点部 : 金めっき 0.25μmMIN.  
CONTACT AREA : GOLD 0.25 MICROMETER MIN.  
半田付け部 : 錫めっき 1.0μmMIN.  
SOLDER TAIL AREA : TIN 1.0 MICROMETER MIN.  
下地めっき : ニッケルめっき 2.0μmMIN.  
UNDER-PLATING : NICKEL 2.0 MICROMETER MIN.  
ショートターミナル  
SHORT TERMINAL  
接点部 : 金めっき 0.25μmMIN.  
CONTACT AREA : GOLD 0.25 MICROMETER MIN.  
半田付け部 : 錫めっき 1.0μmMIN.  
SOLDER TAIL AREA : TIN 1.0 MICROMETER MIN.  
下地めっき : ニッケルめっき 2.0μmMIN.  
UNDER-PLATING : NICKEL 2.0 MICROMETER MIN.  
ネイル  
NAIL  
錫めっき : 1.0μmMIN.  
TIN : 1.0 MICROMETER MIN.  
下地めっき : ニッケルめっき 1.0μmMIN.  
UNDER-PLATING : NICKEL 1.0 MICROMETER MIN.

3. テール平坦度は、0.1 MAX. とする。  
TAIL COPLANARITY TO BE 0.1 MAX.  
ネイル平坦度は、0.1 MAX. とする。  
NAIL COPLANARITY TO BE 0.1 MAX.

4. 本製品は 54697-144\* の鉛フリー品である。  
THIS PRODUCT IS LEAD FREE OF 54697-144\*.



1極目回路番号表示  
CKT.NO.1 IDENTIFICATION



1.75	2.85	1.35	3.25	4.05	***V	ハードトレイ (高さ9) HARD TRAY(HIGHT 9)	54697-7008		
						ハードトレイ (高さ11) HARD TRAY(HIGHT 11)	54697-7005		
						標準トレイ NORMAL TRAY	54697-7002		
3.25	1.35	2.85	1.75	5.55	5.0V	ハードトレイ (高さ9) HARD TRAY(HIGHT 9)	54697-7007	54697-700*	144
						ハードトレイ (高さ11) HARD TRAY(HIGHT 11)	54697-7004		
						標準トレイ NORMAL TRAY	54697-7001		
						ハードトレイ (高さ9) HARD TRAY(HIGHT 9)	54697-7006		
2.5	2.1	2.1	2.5	4.8	3.3V	ハードトレイ (高さ11) HARD TRAY(HIGHT 11)	54697-7003		
						標準トレイ NORMAL TRAY	54697-7000		
E	D	C	B	A	POWER SUPPLY	梱包トレイ PACKAGING TRAY	MATERIAL NO.	MODEL NO.	CKT.

MATERIAL 材料  
注記参照  
SEE NOTES  
FINISH 仕上げ  
注記参照  
SEE NOTES

REVISED  
EC NO: J2007-0519  
DRW:KSAIT001 2006/08/25  
CHK:D:THARUYAMA 2006/08/25  
APPR:NUKITA 2006/09/04  
DESCRIPTION  
REV A

GENERAL TOLERANCES (UNLESS SPECIFIED)  
10 UNDER ±0.2  
10 OVER 30 UNDER ±0.25  
30 OVER ±0.3  
ANGULAR ±3 °  
DRAFT WHERE APPLICABLE  
MUST REMAIN WITHIN DIMENSIONS

DIMENSION STYLE  
MM ONLY  
DRAWN BY Y.WADA DATE 2004/05/14  
CHECKED BY M.SASAO DATE 2004/05/14  
APPROVED BY M.SASAO DATE 2004/05/14  
MATERIAL NO. SEE CHART  
SIZE A3

SCALE 2:1  
DESIGN UNITS METRIC  
THIRD ANGLE PROJECTION  
TITLE 0.8MM PITCH S.O.DIMM SOCKET 144CKT H=4 -LEAD FREE-  
MOLEX MOLEX INCORPORATED  
DOCUMENT NO. SD-54697-004 SHEET NO. 1 OF 3  
THIS DRAWING CONTAINS INFORMATION THAT IS PROPRIETARY TO MOLEX INCORPORATED AND SHOULD NOT BE USED WITHOUT WRITTEN PERMISSION

10 9 8 7 6 5 4 3 2 1

F F

E E

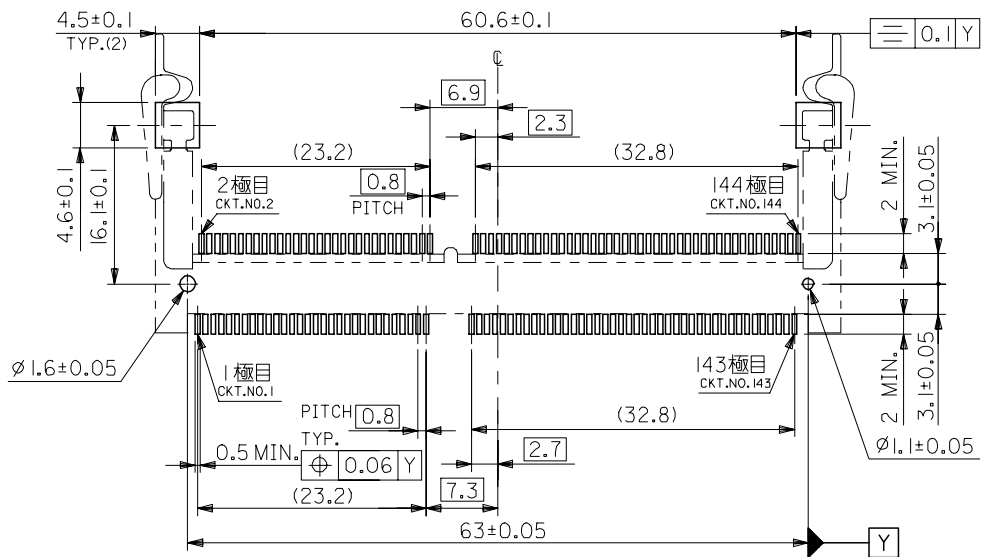
D D

C C

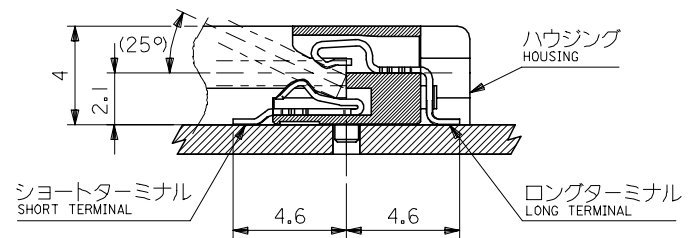
B B

A A

ib\_frame\_A3\_J\_ME\_S  
Rev. D 2004/04/02



推奨基板寸法  
RECOMMENDED PCB PATTERN LAYOUT  
(THK:1.2±0.1)



断面 A-A  
SECTION A-A  
SCALE 5:1

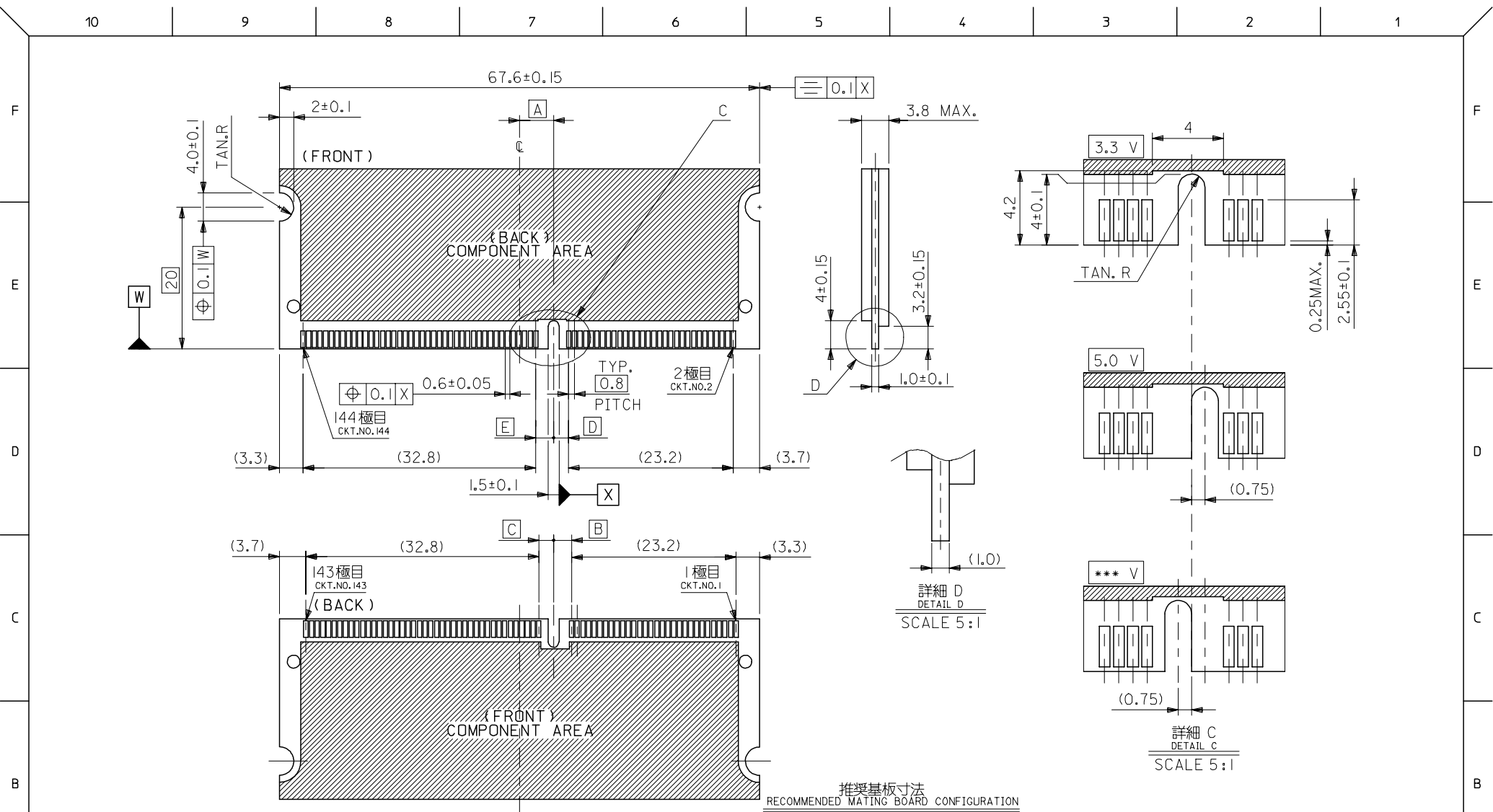
MODEL NO. 54697-700\*

REVISED EC NO: J2007-0519 DRWNG: SALT001 CHKD: THARUYAMA APPR: NUKITA	DESCRIPTION 2006/08/25 2006/08/25 2006/09/04	GENERAL TOLERANCES (UNLESS SPECIFIED)		DIMENSION STYLE MM ONLY	SCALE 2:1	DESIGN UNITS METRIC	THIRD ANGLE PROJECTION	
		10 UNDER	± 0.2	DRAWN BY Y. WADA	DATE 2004/05/14	TITLE 0.8MM PITCH S.O.DIMM SOCKET 144CKT H=4 -LEAD FREE-		
		10 OVER 30 UNDER	± 0.25	CHECKED BY M. SASAO	DATE 2004/05/14	MOLEX INCORPORATED		
		30 OVER	± 0.3	APPROVED BY M. SASAO	DATE 2004/05/14	DOCUMENT NO. SD-54697-004		
ANGULAR ± 3 °		DRAFT WHERE APPLICABLE MUST REMAIN WITHIN DIMENSIONS		MATERIAL NO. SEE SHEET 1 OF 3	SHEET NO. 2 OF 3			

MATERIAL 材料  
注記参照  
SEE NOTES

FINISH 仕上げ  
注記参照  
SEE NOTES

9 8 7 6 5 4 3 2 1 EN-02JA(021)



推奨基板寸法  
RECOMMENDED MATING BOARD CONFIGURATION  
(THK: 1.0 ± 0.1)

MATERIAL 材料	注記参照 SEE NOTES
FINISH 仕上げ	注記参照 SEE NOTES

REVISED EC NO: J2007-0519 DRW:KSAIT001 CHKD:THARUYAMA APPR:NUKITA	GENERAL TOLERANCES (UNLESS SPECIFIED)	DIMENSION STYLE MM ONLY	SCALE 2:1	DESIGN UNITS METRIC	THIRD ANGLE PROJECTION
	10 UNDER ± 0.2	DRAWN BY Y. WADA	DATE 2004/05/14	TITLE 0.8MM PITCH S.O.DIMM SOCKET 144CKT H=4 -LEAD FREE-	
	10 OVER 30 UNDER ± 0.25	CHECKED BY M. SASAO	DATE 2004/05/14	MOLEX INCORPORATED	
	30 OVER ± 0.3	APPROVED BY M. SASAO	DATE 2004/05/14	DOCUMENT NO. SD-54697-004	SHEET NO. 3 OF 3
	ANGULAR ± 3 °	MATERIAL NO. SEE SHEET 1 OF 3			
A	DRAFT WHERE APPLICABLE MUST REMAIN WITHIN DIMENSIONS		THIS DRAWING CONTAINS INFORMATION THAT IS PROPRIETARY TO MOLEX INCORPORATED AND SHOULD NOT BE USED WITHOUT WRITTEN PERMISSION		