

Coaxial

Power Splitter/Combiner

ZN2PD1-222+

2 Way-0° 50Ω 600 to 2200 MHz



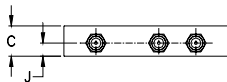
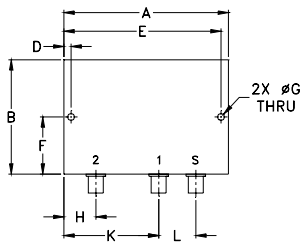
Maximum Ratings

Operating Temperature	-55°C to 100°C
Storage Temperature	-55°C to 100°C
Power Input (as a splitter)	10W max.
Internal Dissipation	0.25W max.

Coaxial Connections

SUM PORT	S
PORT 1	1
PORT 2	2

Outline Drawing



Outline Dimensions (inch/mm)

A	B	C	D	E	F
2.88	2.00	.53	.125	2.750	1.000
73.15	50.80	13.46	3.18	69.85	25.40
G	H	J	K	L	wt
.125	.56	.24	1.66	.65	grams
3.18	14.22	6.10	42.16	16.51	100

Features

- low insertion loss, 0.3 dB typ.
- good isolation, 22 dB typ.
- very good input VSWR, 1.2:1 typ.
- excellent output VSWR, 1.15:1 typ.

Applications

- cellular
- GPS
- PCS
- GSM
- WCDMA
- DCS
- PDC

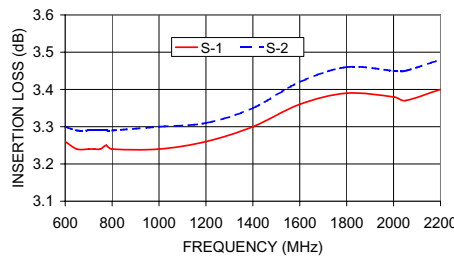
Electrical Specifications

FREQ. RANGE (MHz)	ISOLATION (dB)		INSERTION LOSS (dB) ABOVE 3.0 dB		PHASE UNBALANCE (Degrees)	AMPLITUDE UNBALANCE (dB)	VSWR (:1)			
	Typ.	Min.	Typ.	Max.			S		OUT	
600-725	18	14	0.2	0.5	2	0.2	1.25	1.6	1.15	1.3
725-2050	22	16	0.3	0.7	3	0.3	1.2	1.6	1.15	1.3
2050-2200	20	15	0.3	0.8	3	0.4	1.2	1.6	1.1	1.3

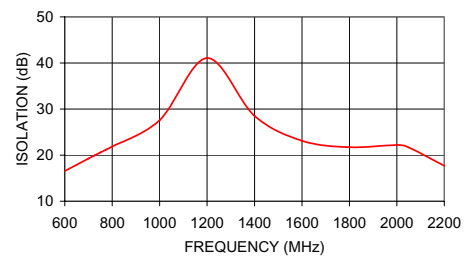
Typical Performance Data

Frequency (MHz)	Insertion Loss (dB)		Amplitude Unbalance (dB)	Isolation (dB)	Phase Unbalance (deg.)	VSWR S	VSWR 1	VSWR 2
	S-1	S-2						
600.00	3.26	3.30	0.04	16.55	0.01	1.35	1.19	1.19
650.00	3.24	3.29	0.05	17.91	0.04	1.31	1.17	1.17
700.00	3.24	3.29	0.04	19.26	0.03	1.28	1.15	1.16
725.00	3.24	3.29	0.05	19.92	0.02	1.27	1.15	1.15
750.00	3.24	3.29	0.05	20.57	0.01	1.26	1.14	1.14
775.00	3.25	3.29	0.04	21.21	0.05	1.25	1.13	1.14
800.00	3.24	3.29	0.05	21.86	0.03	1.24	1.12	1.13
1000.00	3.24	3.30	0.06	27.59	0.02	1.16	1.06	1.08
1200.00	3.26	3.31	0.05	41.07	0.05	1.11	1.10	1.09
1400.00	3.30	3.35	0.05	28.51	0.07	1.19	1.16	1.12
1600.00	3.36	3.42	0.06	23.11	0.08	1.31	1.17	1.14
1800.00	3.39	3.46	0.07	21.72	0.17	1.34	1.12	1.12
2000.00	3.38	3.45	0.08	22.20	0.21	1.23	1.09	1.10
2050.00	3.37	3.45	0.08	21.66	0.21	1.20	1.09	1.10
2200.00	3.40	3.48	0.09	17.69	0.22	1.24	1.13	1.14

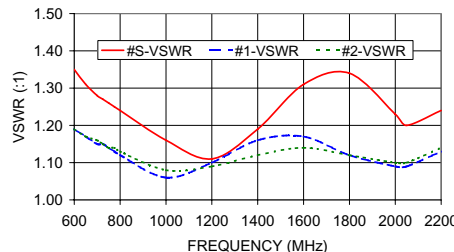
ZN2PD1-222+ INSERTION LOSS



ZN2PD1-222+ ISOLATION



ZN2PD1-222+ VSWR



electrical schematic



P.O. Box 350166, Brooklyn, New York 11235-0003 (718) 934-4500 Fax (718) 332-4661 For detailed performance specs & shopping online see Mini-Circuits web site



The Design Engineers Search Engine Provides ACTUAL Data Instantly From MINI-CIRCUITS At: www.minicircuits.com

RF/IF MICROWAVE COMPONENTS

REV. OR
M106317
ED-8511B/1
ZN2PD1-222+
LC/TD/CP/AM
080807