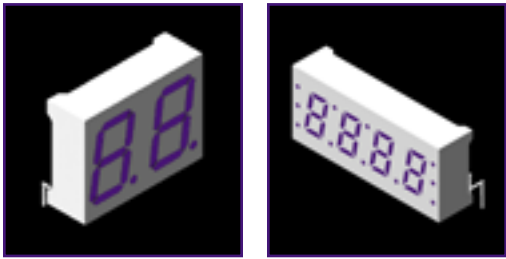


Dual and Four Digit



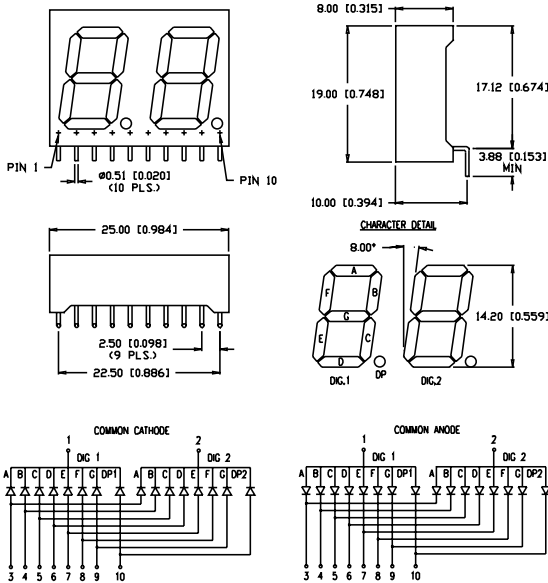
Features/Options

- ▶ Standard and high brightness chips
- ▶ Custom sizes at minimal cost
- ▶ Right angle pins eliminate expensive sockets
- ▶ Intensity grading available at chip level

Applications/Uses

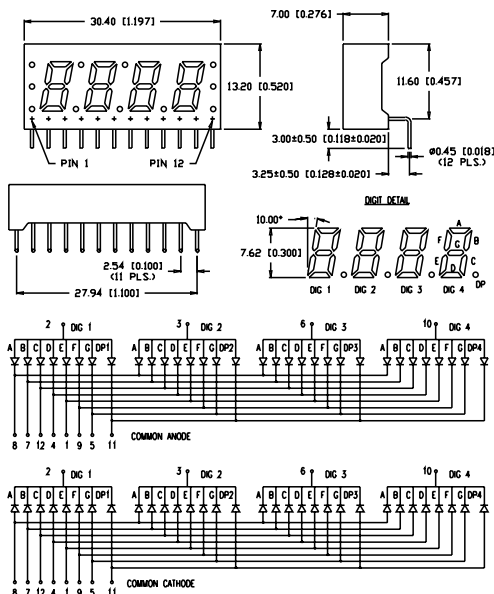
- ▶ Panel meter displays
- ▶ Time lapsed panels
- ▶ Diagnostic equipment
- ▶ Counter displays

0.56" dual digit



Part Number	Wave Length (nm)	Brightness (ucd) @ 10mA	Vf (typ) 10mA	Vf (max) 10mA	Emitted Color	Polarity (column)
LDD-M512RI-RA	565	2500	2.2	2.6	Green	Anode
LDD-M514RI-RA	635	2500	2.0	2.5	Red	Anode
LDD-M516RI-RA	660	8000	1.7	2.2	Red	Anode
LDD-M512RI-RA-SUG	574	7000	2.2	2.6	Green	Anode
LDD-M514RI-RA-SI	636	15,000	2.0	2.6	Red	Anode
LDD-M517RI-RA-USB	470	6000	3.5	4.0	Blue	Anode
LDD-N512RI-RA	565	2500	2.2	2.6	Green	Cathode
LDD-N514RI-RA	635	2500	2.0	2.5	Red	Cathode
LDD-N516RI-RA	660	8000	1.7	2.2	Red	Cathode
LDD-N512RI-RA-SUG	574	7000	2.2	2.6	Green	Cathode
LDD-N514RI-RA-SI	636	15,000	2.0	2.6	Red	Cathode
LDD-N517RI-RA-USB	470	6000	3.5	4.0	Blue	Cathode

0.30" four digit



Part Number	Wave Length (nm)	Brightness (ucd) @ 10mA	Vf (typ) 10mA	Vf (max) 10mA	Emitted Color	Polarity (column)
LDQ-M3042RI-RA	565	2500	2.2	2.6	Green	Anode
LDQ-M3044RI-RA	635	2500	2.0	2.5	Red	Anode
LDQ-M3046RI-RA	660	8000	1.7	2.2	Red	Anode
LDQ-M3042RI-RA-SUG	574	7000	2.2	2.6	Green	Anode
LDQ-M3044RI-RA-SI	636	15,000	2.0	2.6	Red	Anode
LDQ-M3047RI-RA-USB	470	6000	3.5	4.0	Blue	Anode
LDQ-N3042RI-RA	565	2500	2.2	2.6	Green	Cathode
LDQ-N3044RI-RA	635	2500	2.0	2.5	Red	Cathode
LDQ-N3046RI-RA	660	8000	1.7	2.2	Red	Cathode
LDQ-N3042RI-RA-SUG	574	7000	2.2	2.6	Green	Cathode
LDQ-N3044RI-RA-SI	636	15,000	2.0	2.6	Red	Cathode
LDQ-N3047RI-RA-USB	470	6000	3.5	4.0	Blue	Cathode



USA/Canada 1-800-278-5666
Asia +886-3-5821124



www.lumex.com



USA/Canada 1-847-359-8904
Asia +886-3-5821154