

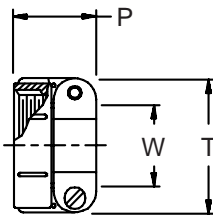
620-053
Backshell Accessory Thread Strain Reliefs



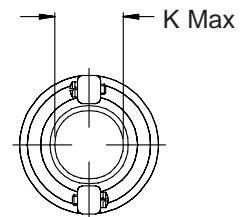
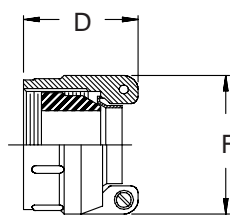
620-053 M 16 A

Basic Part No. _____
 Finish (Table II) _____
 Clamp Style _____
 Dash No. _____

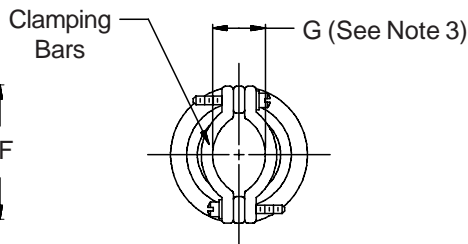
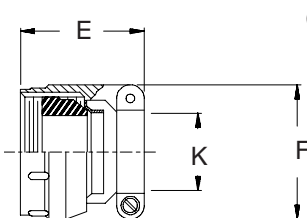
STYLE A
 Medium Duty
 (Table V)



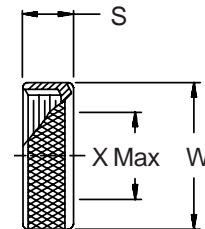
STYLE B
 Medium Duty
 (Table III)



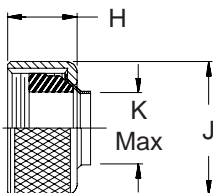
STYLE C
 Medium Duty
 (Table III)



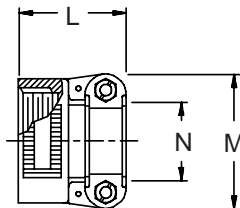
STYLE D
 Medium Duty
 (Table V)



STYLE E
 Medium Duty
 (Table III)



STYLE H
 Heavy Duty
 (Table IV)



STYLE M
 Medium Duty
 (Table V)

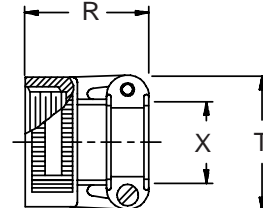


TABLE III: CABLE ENTRY

Dash No.	D Max	E Max	F Max	G Ref	H Max	J Max	K - Cable Range	
							Min *	Max
03	1.031 (26.2)	1.375 (34.9)	.812 (20.6)	.135 (3.4)	.781 (19.8)	.812 (20.6)	.156 (4.0)	.219 (5.6)
04	1.031 (26.2)	1.375 (34.9)	.937 (23.8)	.203 (5.2)	.781 (19.8)	.937 (23.8)	.188 (4.8)	.312 (7.9)
06	1.031 (26.2)	1.375 (34.9)	1.062 (27.0)	.285 (7.2)	.781 (19.8)	1.062 (27.0)	.281 (7.1)	.438 (11.1)
08	1.031 (26.2)	1.375 (34.9)	1.188 (30.2)	.350 (8.9)	.781 (19.8)	1.188 (30.2)	.312 (7.9)	.531 (13.5)
10	1.094 (27.8)	1.437 (36.5)	1.312 (33.3)	.390 (9.9)	.844 (21.4)	1.312 (33.3)	.375 (9.5)	.625 (15.9)
12	1.219 (31.0)	1.437 (36.5)	1.562 (39.7)	.460 (11.7)	.875 (22.2)	1.562 (39.7)	.500 (12.7)	.750 (19.1)
16	1.219 (31.0)	1.562 (39.7)	1.750 (44.5)	.510 (13.0)	.875 (22.2)	1.750 (44.5)	.625 (15.9)	.938 (23.8)
20	1.344 (34.1)	1.812 (46.0)	2.250 (57.2)	.695 (17.7)	.969 (24.6)	2.250 (57.2)	.938 (23.8)	1.250 (31.8)
24	1.547 (39.3)	2.062 (52.4)	2.375 (60.3)	.715 (18.2)	1.188 (30.2)	2.375 (60.3)	1.000 (25.4)	1.375 (34.9)
28	1.547 (39.3)	2.062 (52.4)	2.625 (66.7)	.915 (23.2)	1.188 (30.2)	2.625 (66.7)	1.250 (31.8)	1.625 (41.3)
32	1.734 (44.0)	2.188 (55.6)	2.812 (71.4)	1.070 (27.2)	1.375 (34.9)	2.812 (71.4)	1.500 (38.1)	1.875 (47.6)

* Not Applicable Styles B and E

TABLE IV: CABLE ENTRY

Dash No.	L Max	M Max	N - Cable Range	
			Min	Max
04	1.312 (33.3)	.957 (24.3)	.125 (3.2)	.312 (7.9)
06	1.312 (33.3)	1.145 (29.1)	.250 (6.4)	.437 (11.1)
08	1.312 (33.3)	1.332 (33.8)	.312 (7.9)	.562 (14.3)
10	1.312 (33.3)	1.332 (33.8)	.350 (8.9)	.625 (15.9)
12	1.344 (34.1)	1.551 (39.4)	.500 (12.7)	.750 (19.1)
16	1.438 (36.5)	1.770 (45.0)	.625 (15.9)	.937 (23.8)
20	1.625 (41.3)	2.113 (53.7)	.875 (22.2)	1.250 (31.8)
24	1.688 (42.9)	2.363 (60.0)	1.000 (25.4)	1.375 (34.9)
28	1.938 (49.2)	2.770 (70.4)	1.250 (31.8)	1.625 (41.3)
32	1.938 (49.2)	3.020 (76.7)	1.437 (36.5)	1.875 (47.6)

See inside back cover fold-out or page 14 for Table II.

1. Metric dimensions (mm) are indicated in parentheses.
2. Cable range is defined as the accommodations range for the wire bundle or cable. Dimensions shown are not intended for inspection criteria.
3. Style C saddles are bottomed on clamp ears.

TABLE V: CABLE ENTRY

Dash No.	P Max	R Max	S Max	T Max	W Max	X - Cable Range	
						Min **	Max
03*	.844 (21.4)	n/a	.562 (14.3)	.843 (21.4)	.630 (16.0)	.156 (4.0)	.250 (6.4)
04*	.844 (21.4)	n/a	.562 (14.3)	.906 (23.0)	.755 (19.2)	.188 (4.8)	.312 (7.9)
06*	.906 (23.0)	n/a	.562 (14.3)	1.093 (27.8)	.942 (23.9)	.281 (7.1)	.438 (11.1)
08	.969 (24.6)	1.312 (33.3)	.562 (14.3)	1.187 (30.1)	1.067 (27.1)	.344 (8.7)	.562 (14.3)
10	.969 (24.6)	1.312 (33.3)	.562 (14.3)	1.281 (32.5)	1.192 (30.3)	.375 (9.5)	.625 (15.9)
12	.969 (24.6)	1.344 (34.1)	.562 (14.3)	1.500 (38.1)	1.380 (35.1)	.438 (11.1)	.750 (19.1)
16	1.062 (27.0)	1.688 (42.9)	.562 (14.3)	1.719 (43.7)	1.535 (39.0)	.562 (14.3)	.938 (23.8)
20	1.125 (28.6)	1.906 (48.4)	.562 (14.3)	2.062 (52.4)	1.848 (46.9)	.750 (19.1)	1.250 (31.8)
24	1.188 (30.2)	1.906 (48.4)	.594 (15.1)	2.312 (58.7)	2.255 (57.3)	.781 (19.8)	1.375 (34.9)
28	1.719 (43.7)	2.125 (54.0)	.594 (15.1)	2.719 (69.1)	2.505 (63.6)	.969 (24.6)	1.625 (41.3)
32*	1.781 (45.2)	n/a	.750 (19.1)	2.969 (75.4)	2.755 (70.0)	1.125 (28.6)	1.875 (47.6)
40*	1.781 (45.2)	n/a	.812 (20.6)	3.531 (89.7)	3.255 (82.7)	1.469 (37.3)	2.375 (60.3)

* Not available in Style M clamp.

** Not Applicable Style D