

**PLEASE CHECK WWW.MOLEX.COM FOR LATEST PART INFORMATION**

**Part Number:** [0795161063](#)  
**Status:** **Active**  
**Overview:** [microfit\\_30](#)  
**Description:** Micro-Fit Overmolded Cable Assembly, 6 Circuit, 3.0m (9.84' ) Length

**Documents:**

[Drawing \(PDF\)](#) [RoHS Certificate of Compliance \(PDF\)](#)

**General**

Product Family	Cable Assemblies
Series	<a href="#">79516</a>
Connector to Connector	Micro-Fit-to-Micro-Fit
Overview	<a href="#">microfit_30</a>
Product Name	Micro-Fit 3.0™

**Physical**

Cable Length	3.0m (9.84' )
Circuits (Loaded)	6
Color - Resin	Black
Gender	Female-Female
Lock to Mating Part	Yes
Material - Metal	Phosphor Bronze
Material - Plating Mating	Tin
Material - Plating Termination	Tin
Material - Resin	Polyester
Packaging Type	Bag
Pitch - Mating Interface (in)	0.118 In
Pitch - Mating Interface (mm)	3.00 mm
Plating min: Mating (µin)	40
Plating min: Mating (µm)	1.00
Plating min: Termination (µin)	40
Plating min: Termination (µm)	1.00
Single Ended	No
Wire Insulation Diameter	N/A
Wire Size AWG	26
Wire/Cable Type	Jacketed

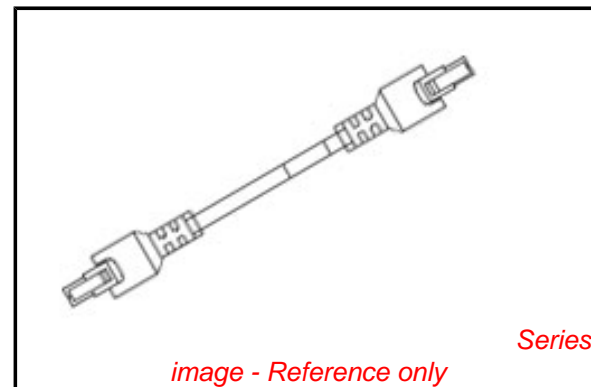
**Electrical**

Current - Maximum per Contact	5A
Shielded	No
Voltage - Maximum	250V

**Material Info**

**Reference - Drawing Numbers**

Sales Drawing	SD-79516-003
---------------	--------------



*image - Reference only*

**EU RoHS**

**ELV and RoHS  
Compliant**  
**REACH SVHC**  
 Not Reviewed  
**Halogen-Free  
Status**  
**Not Reviewed**

**China RoHS**



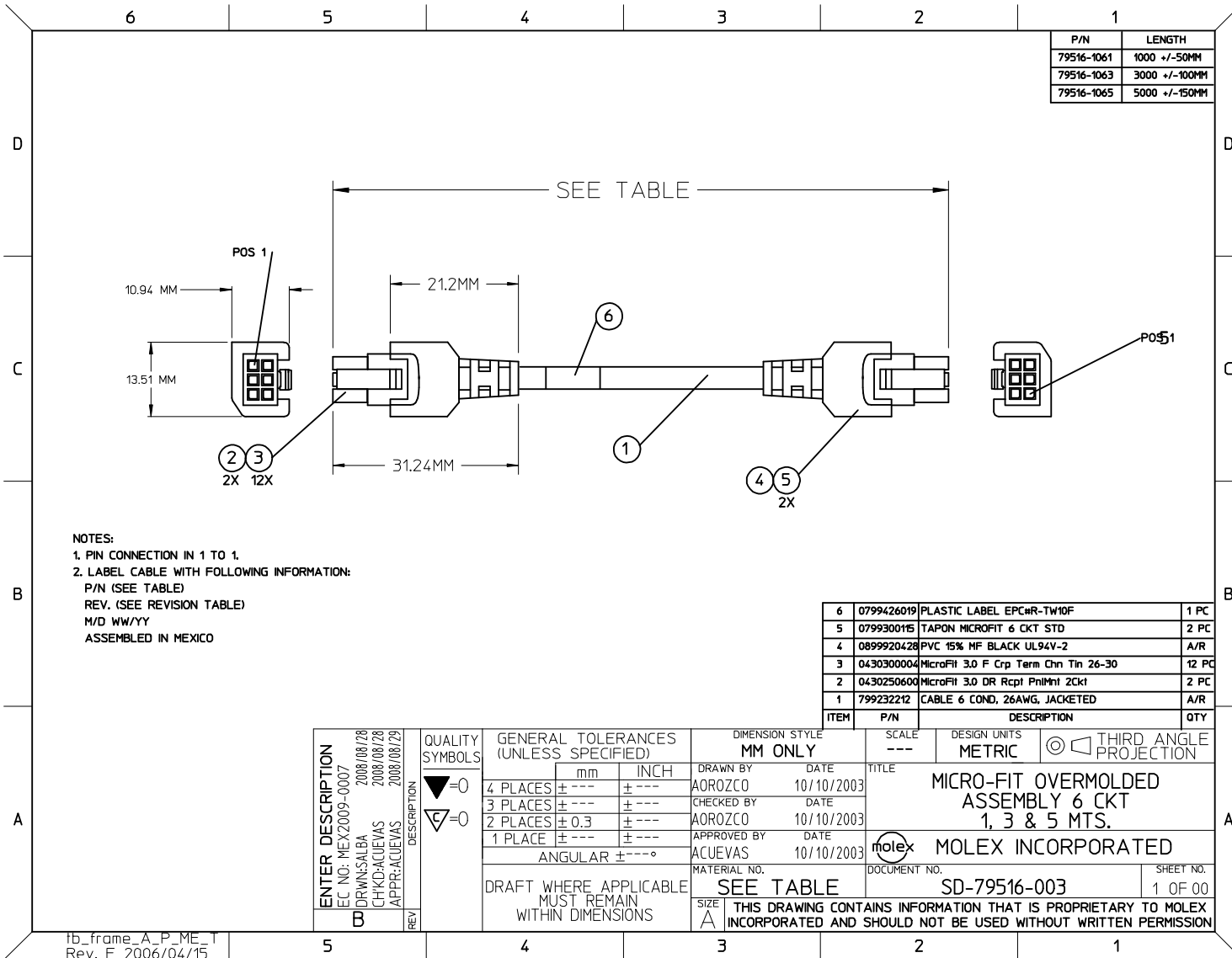
**Need more information on product  
environmental compliance?**

Email [productcompliance@molex.com](mailto:productcompliance@molex.com)  
 For a multiple part number RoHS Certificate of  
 Compliance, [click here](#)

Please visit the [Contact Us](#) section for any  
 non-product compliance questions.

**Search Parts in this Series**

[79516Series](#)



NOTES:  
 1. PIN CONNECTION IN 1 TO 1.  
 2. LABEL CABLE WITH FOLLOWING INFORMATION:  
 P/N (SEE TABLE)  
 REV. (SEE REVISION TABLE)  
 M/D WW/YY  
 ASSEMBLED IN MEXICO

ITEM	P/N	DESCRIPTION	QTY
6	0799426019	PLASTIC LABEL EPC#R-TW10F	1 PC
5	079930015	TAPON MICROFIT 6 CKT STD	2 PC
4	0899920428	PVC 15% HF BLACK UL94V-2	A/R
3	0430300004	MicroFit 3.0 F Crp Term Chn Tin 26-30	12 PC
2	0430250600	MicroFit 3.0 DR Rcpt PnlMnt 2CKt	2 PC
1	799232212	CABLE 6 COND, 26AWG, JACKETED	A/R

<b>ENTER DESCRIPTION</b> EC NO: MEX2009-0007 DRWNSALBA 2008/08/28 CHYKDACUEVAS 2008/08/28 APPR:ACUEVAS 2008/08/28	<b>QUALITY SYMBOLS</b> ▽=0 ▽=0	<b>GENERAL TOLERANCES (UNLESS SPECIFIED)</b> <table border="1"> <thead> <tr> <th></th> <th>mm</th> <th>INCH</th> </tr> </thead> <tbody> <tr> <td>4 PLACES</td> <td>± ---</td> <td>± ---</td> </tr> <tr> <td>3 PLACES</td> <td>± ---</td> <td>± ---</td> </tr> <tr> <td>2 PLACES</td> <td>± 0.3</td> <td>± ---</td> </tr> <tr> <td>1 PLACE</td> <td>± ---</td> <td>± ---</td> </tr> <tr> <td colspan="3">ANGULAR ± ---°</td> </tr> </tbody> </table>		mm	INCH	4 PLACES	± ---	± ---	3 PLACES	± ---	± ---	2 PLACES	± 0.3	± ---	1 PLACE	± ---	± ---	ANGULAR ± ---°			<b>DIMENSION STYLE</b> MM ONLY	SCALE --- DESIGN UNITS METRIC	THIRD ANGLE PROJECTION
		mm	INCH																				
	4 PLACES	± ---	± ---																				
	3 PLACES	± ---	± ---																				
2 PLACES	± 0.3	± ---																					
1 PLACE	± ---	± ---																					
ANGULAR ± ---°																							
<b>REVISIONS</b> B	<b>DRAFT WHERE APPLICABLE MUST REMAIN WITHIN DIMENSIONS</b>	DRAWN BY AOROZCO DATE 10/10/2003 CHECKED BY AOROZCO DATE 10/10/2003 APPROVED BY ACUEVAS DATE 10/10/2003	MATERIAL NO. SEE TABLE	TITLE MICRO-FIT OVERMOLDED ASSEMBLY 6 CKT 1, 3 & 5 MTS.	MOLEX INCORPORATED																		
			SIZE A	DOCUMENT NO. SD-79516-003	SHEET NO. 1 OF 00																		
THIS DRAWING CONTAINS INFORMATION THAT IS PROPRIETARY TO MOLEX INCORPORATED AND SHOULD NOT BE USED WITHOUT WRITTEN PERMISSION																							