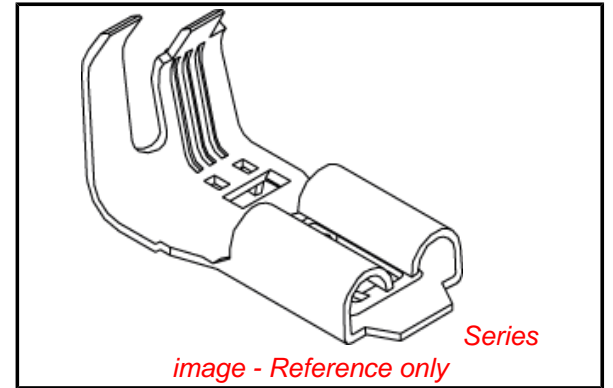


PLEASE CHECK WWW.MOLEX.COM FOR LATEST PART INFORMATION

Part Number: **0357251810**
Status: **Active**
Description: 6.35mm (.250") Tab Slip-On Wire-to-Wire Terminal, Male, 14-18 AWG, Post-Tin Plated

Documents:

Drawing (PDF)	Product Specification PS-35546-001 (PDF)
Product Specification PS-35166-001 (PDF)	Product Specification PS-35725-002 (PDF)
Product Specification PS-35254-001 (PDF)	Product Specification PS-35725-005 (PDF)
Product Specification PS-35270-001 (PDF)	Product Specification PS-35955-001 (PDF)
Product Specification PS-35519-001 (PDF)	RoHS Certificate of Compliance (PDF)



General

Product Family	Crimp Terminals
Series	<u>35725</u>
Crimp Quality Equipment	Yes
Product Name	N/A

Physical

Gender	Male
Material - Metal	Brass
Material - Plating Mating	Tin
Material - Plating Termination	Tin
Packaging Type	Reel
Plating min: Mating (µin)	40
Plating min: Mating (µm)	1
Plating min: Termination (µin)	40
Plating min: Termination (µm)	1
Wire Insulation Diameter	3.60mm (.142") max.
Wire Size AWG	14, 16, 18
Wire Size mm ²	N/A

Material Info

Reference - Drawing Numbers

Product Specification	PS-35166-001, PS-35254-001, PS-35270-001, PS-35519-001, PS-35546-001, PS-35725-002, PS-35725-005, PS-35955-001
Sales Drawing	SD-35725-***0

EU RoHS

**ELV and RoHS
Compliant**

REACH SVHC

Contains SVHC: No

Halogen-Free

Status

Halogen-Free

China RoHS



**Need more information on product
environmental compliance?**

Email productcompliance@molex.com
For a multiple part number RoHS Certificate of
Compliance, [click here](#)

Please visit the [Contact Us](#) section for any
non-product compliance questions.

Search Parts in this Series

35725Series

Mates With

35725-37xx

Application Tooling | FAQ

*Tooling specifications and manuals are
found by selecting the products below.
Crimp Height Specifications are then
contained in the Application Tooling
Specification document.*

Global

Description

Product #

Mini-Mac™

0638014800

Applicator Rear Feed

DO NOT SCALE DRAWING
DIMENSION IN METRIC

B

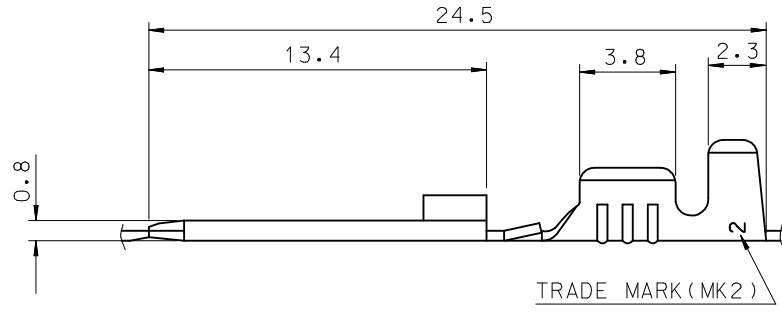
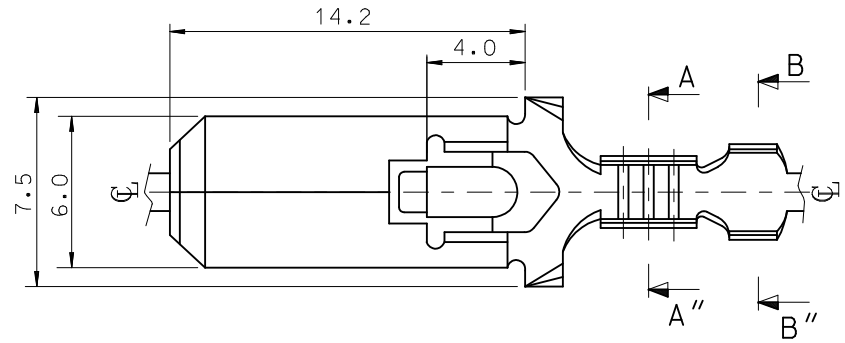
C

PROJECT NO.

SIMILAR ITEM

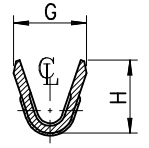
DWG. 10.

SD_35725-30*0/18*0/19*0/20*0

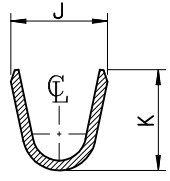


NOTES

1. MATERIAL: BRASS, 0.39mm THICK'
2. FINISH: UNPLATED (35725-3000/1800/1900/2000)
POST-TIN PLATED (35725-3010/1810/1910/2010)
3. MATING RECEPTACLE TERMINAL: 35725-36*0(L)
35725-37*0(M)
35725-38*0(S)



SECTION A-A"



SECTION B-B"

ENG.NO.	G	H	J	K	WIRE RANGE	SIZE
35725-30*0	2.85	2.9	3.8	4.0	AWG#22-#20	S
35725-18*0	3.4	3.6	5.2	5.2	AWG#18-#14	M
35725-19*0	5.3	4.5	6.2	5.6	AWG#14-#12	L
35725-20*0	5.3	4.5	6.6	4.8	AWG #18x2	XL

REVISED EC NO. KOR2000-0007 DRW:W.Y.YANG 00/02/08 CH'K: APPR:	DESCRIPTION MAJOR = 0 CRITICAL C = 0	GENERAL TOLERANCES: (UNLESS SPECIFIED)		SCALE 5:1	DESIGN UNITS <input checked="" type="checkbox"/> mm <input type="checkbox"/> INCH	DIMENSIONS: <input type="checkbox"/> mm <input type="checkbox"/> INCH <input checked="" type="checkbox"/> mm ONLY	SHT REV
		mm INCH	DRAWN BY & DATE W.Y.YANG 93/03/05	THIRD ANGLE PROJECTION		TITLE: .250 SLIP-ON TAB	
C	REV	4 PLACES ±0. ±.	3 PLACES ±0. ±.	CHECKED BY & DATE B.K.CHOI 93/03/05	MOLEX INCORPORATED KOREA		
		2 PLACES ±0.30 ±.	1 PLACE ±0.30 ±.	APPROVED BY & DATE C.W.LEE 93/03/05	MATERIAL NO. SEE CHART	DRAWING NO. SD-35725-***0	SHEET NO. 10F1
DRAFT WHERE APPLICABLE MUST REMAIN WITHIN DIMENSIONS		ANGULAR: ± 3°	CAD FILENAME S7253000.DGN		THIS DRAWING CONTAINS INFORMATION THAT IS PROPRIETARY TO MOLEX INCORPORATED AND SHOULD NOT BE USED WITHOUT WRITTEN PERMISSION.		

MX-A3