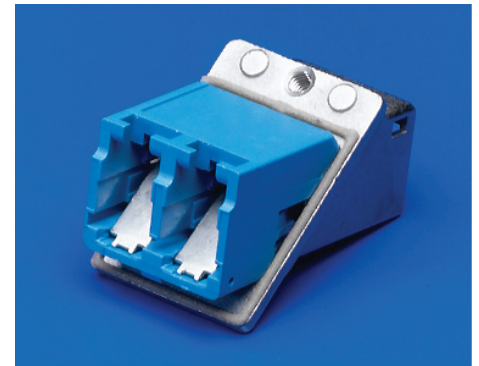




## Optical Multi-Format EMI Adapters

### 106100 LC, MU, LX.5



#### Limit front-panel Electro Magnetic Interference (EMI) emissions with Molex's new 3-in-1 Optical Multi-Format EMI Adapter

The versatile optical multi-format EMI adapter provides users with one adapter interface for three connector styles. In addition, this new adapter provides EMI protection in front-panel applications.

The two-position multi-format adapter is available in a single-screw, rear-mount configuration which accepts simplex LC connectors on the internal side and simplex LC, MU, or LX.5 connectors on the user side. This design allows the equipment manufacturer to have a consistent LC internal interface while allowing end users to select the most appropriate connector (LC, MU, or LX.5) for their applications, without having to change adapters or re-configure the equipment. The angled-mount design cut-outs are unique to this adapter. Internal shutters are standard, ensuring eye laser-safety protection.

The multi-format EMI shielding adapters are designed to address mechanical design requirements to limit EMI emissions from the equipment front panel. These adapters are constructed with a die-cast mounting body with an EMI gasket that seals the adapters to the panel and a polymer user interface which decreases contamination and connector wear during high-use applications. Multi-format EMI adapters increase the shielding effectiveness while enhancing the front panel aesthetics compared to traditional plastic adapters.

Molex's Multi-Format EMI Adapters complement the existing robust EMI adapter offering. For more details on Molex's EMI adapter products, visit: [www.molex.com/product/fiber/emiadapter.html](http://www.molex.com/product/fiber/emiadapter.html).

#### Features and Benefits

- Allows the use of either LC, MU or LX.5 simplex connectors reducing customers' card inventory for different connector styles and allows one adapter interface to mate with three different industry-standard connectors styles
- Aperture is reduced to the minimum possible size minimizing EMI emissions
- EMI gaskets included create an EMI seal between the adapter and the mounting surface
- Internal safety shutters included to provide automatic eye safety
- Single screw-mount style provides easy mounting
- 45° mounting orientation allows for lower cable exit profile
- Die-cast adapter housings provide superior shielding effectiveness

#### SPECIFICATIONS

##### Reference Information

Packaging: Tray

Mates With:

Front Interface: LC simplex, MU simplex, LX.5 simplex connectors

Rear Interface: LC simplex connectors

Designed In: Millimeters

##### Mechanical

Mating Durability: IL<0.3dB over 200 cycles

##### Physical

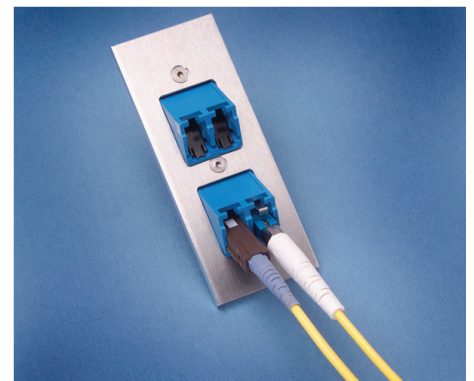
Adapter Housing: Back-end – Zinc Die-cast  
Front-end – Polymer

Plating: Nickel Chrome

Alignment Sleeve: Zirconia Ceramic

Operating Temperature: -40 to +85° C

Mates with: Industry standard fiber optic connectors



LC, MU, LX.5 Multi-Format Duplex EMI Adapter

## APPLICATIONS

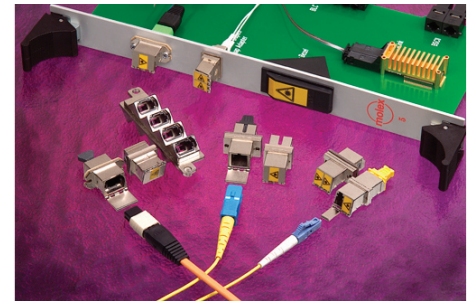
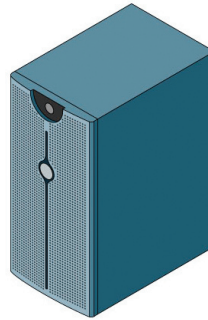


## Optical Multi-Format EMI Adapters

### 106100 LC, MU, LX.5

- Telecommunication
  - High-speed line cards
  - Server blades
  - Router connections
- Storage
  - ATM equipment
  - Gigabit Ethernet testing
- Other Markets
  - Test equipment
  - Any front panel application where EMI is an issue

Offers a more robust and visually appealing adapter than traditional plastic adapters



## ORDERING INFORMATION

Order No.	Type	Mount Style	Mount Angle	Shutter	Mount From
106100-9000	LC/MU/LX.5 Duplex Adapter	Single Screw	45°	Internal Front Side	Rear

**Thermal Products Headquarters**  
1750 Country Farm Drive  
Naperville, IL 60563 USA  
1-800-78MOLEX

**Asia Pacific North Headquarters**  
Yamato, Kanagawa, Japan  
81-46-265-2324  
feninfo@molex.com

**Asia Pacific South Headquarters**  
Jurong, Singapore  
65-6268-6868  
fesinfo@molex.com

**European Headquarters**  
Munich, Germany  
49-89-413092-0  
eurinfo@molex.com

**Corporate Headquarters**  
2222 Wellington Ct.  
Lisle, IL 60532 U.S.A.  
630-969-4550  
Fax: 630-969-1352

Visit our website at [www.molex.com/product/fiber/multiformatemi.html](http://www.molex.com/product/fiber/multiformatemi.html)