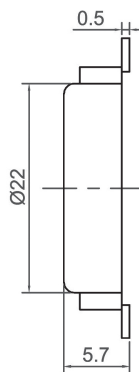
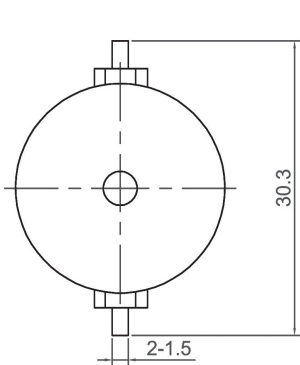
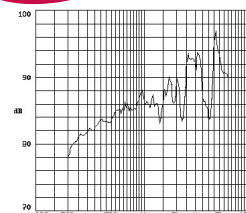


# External Drive Piezo Transducer (AC)

CANOPUS



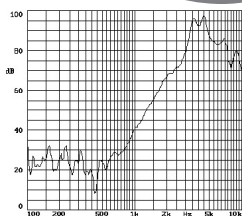
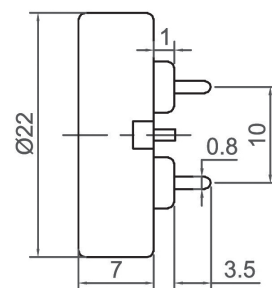
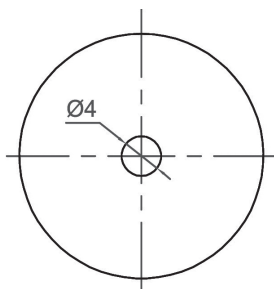
CPT2206



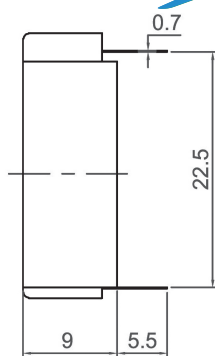
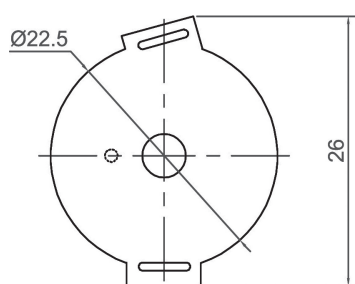
Canopus Part no.	Min sound Output (dBA)	Rated Voltage (V)	Max Input Voltage (V)	Resonant Frequency (Hz)	Capacitance (pF)	Operating Temperature (°C)	Housing	Weight (g)
CPT2206H25LP	80 AT 10cm	10 Vp-p	30 Vrms	2500	25000 ± 30% at 1000Hz	-30 ~ +85	LCP	2



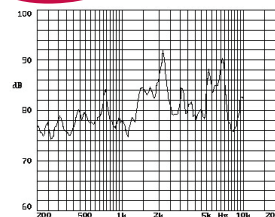
CPT2207



Canopus Part no.	Min sound Output (dBA)	Rated Voltage (V)	Max Input Voltage (V)	Resonant Frequency (Hz)	Capacitance (pF)	Operating Temperature (°C)	Housing	Weight (g)
CPT2207C40TP	80 AT 10cm	3 Vp-p	30 Vrms	4000	15000 ± 30% at 1000Hz	-20 ~ +60	PBT	3



CPT2209



Canopus Part no.	Min sound Output (dBA)	Rated Voltage (V)	Max Input Voltage (V)	Resonant Frequency (Hz)	Capacitance (pF)	Operating Temperature (°C)	Housing	Weight (g)
CPT2209H20NP	80 AT 10cm	10 Vp-p	40 Vrms	2048	24000 ± 30% at 1000Hz	-20 ~ +80	Noryl	2

**Your Efficient Supplier**  
[www.canopus.com.hk](http://www.canopus.com.hk)

TEL.: (852) 2806 2812

Fax: (852) 2652 2216