



16OPzV2000(2V2000Ah)



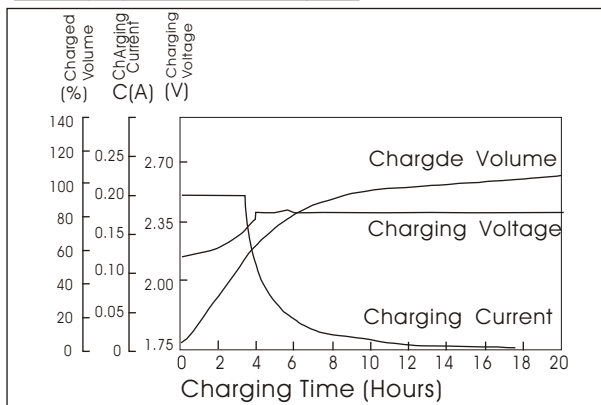
Specifications

Nominal Voltage		2 V
Rated capacity (10 hour rate)		2000 Ah
Dimensions	Total Height	813 mm (32.0 inches)
	Height	772mm (30.39inches)
	Length	397mm (15.6 inches)
	Width	212 mm (8.34inches)
Weight Approx		156Kg (343.2lbs)

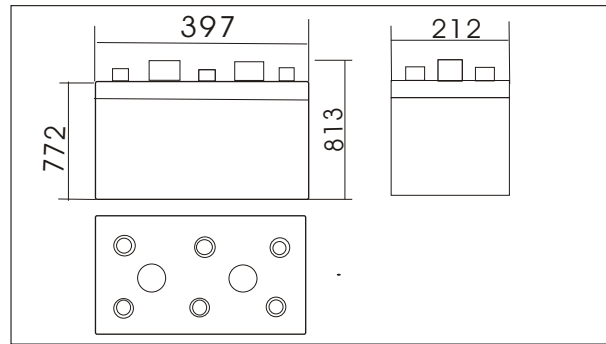
Characteristics

Capacity 25°C(77°F)	10 hour rate(200 A) 1 hour rate(900A) 0.5 hour rate(1400A)	2000Ah 900 Ah 700Ah
Capacity affected by Temperature (10hour rate)	40°C(104°F) 25°C(77°F) 0°C(32°F) -15°C(5°F)	102% 100% 85% 65%
Self-Discharge at 25°C(77°F)	Capacity after 3 month storage Capacity after 6 month storage Capacity after 12 month storage	91% 82% 64%
Terminal quantity	6	
Charge (constant Voltage)	Initial Charging Current less than 400.0A Voltage 2.25-2.40V	

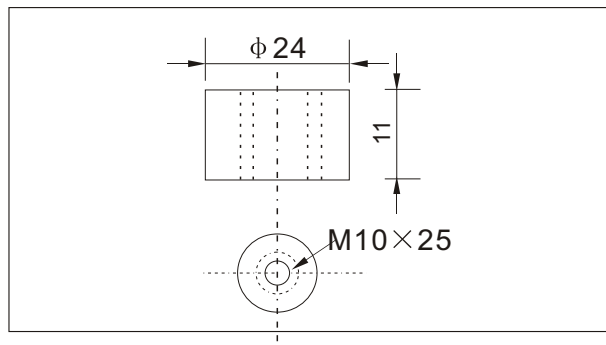
Charging characteristics(25°C)



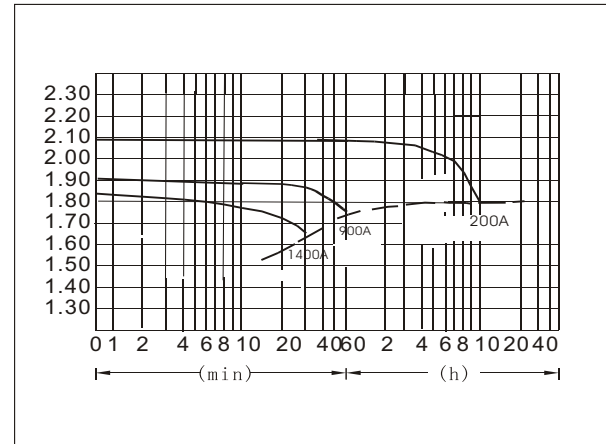
Outer dimensions (mm)



Terminal Type (mm)



Discharge Curves 25°C(77°F)



Cycling Curves

