

New Jersey Semi-Conductor Products, Inc.

20 STERN AVE.
 SPRINGFIELD, NEW JERSEY 07081
 U.S.A.

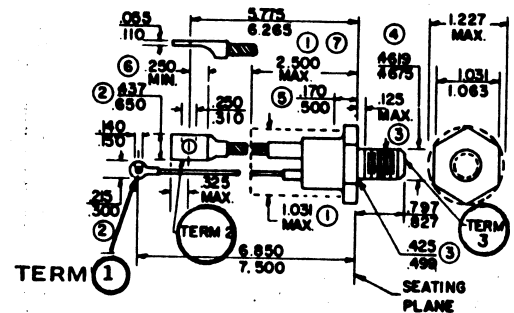
TELEPHONE: (201) 376-2922
 (212) 227-6005
 FAX: (201) 376-8960

PARAMETERS

2N3094
 SCR, V(DRM) = 900 V TO 999.9 V

Description: SCR, V(DRM) = 900 V to 999.9 V

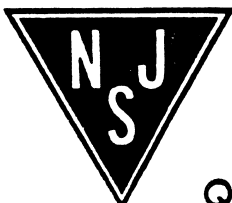
Manufacturer.....	
Mil/High-Rel? (Y/N).....	
V(drm) Max.....	900
It(stat) Max. (A).....	70I
@Temp. (test) (x°C).....	62#
Supp Cur. I(TSM).....	1.0k%
Firing Char-Igt Max.....	200
Firing Char-Vgt Max.....	3.
Id(off) Max. (A).....	2.5m
@Temp. (test) (x°C).....	62#
I(h) Max. (A).....	
V(T) Max.....	1.9
@It (A).....	70
Dv/Dt Worst Case.....	20
t(switch) Off Typ. Time (S)...	
@It (test) (A).....	
t(switch) Off Typ. Time (S)...	
Oper. Temp (x°C) Min.....	-40
Oper. Temp (x°C) Max.....	125u
Pkg Style.....	T0-49
Surface Mounted (Y/N).....	N



u Junction Temperature # Case Temperature % @ above 125x°C I It (Average)
 2 It(rms) Measured at < 25x°C

TO49 NOTES:

1. The device with the exception of the hexagon, thread, and flexible lead extensions lies within the cylinder defined by dia. 1.031 max. and length 2.5 max.
2. Angular orientation of these terminals with respect to hexagonal portion is undefined. Square or radius on end of terminals is optional.
3. Length of incomplete or undercut threads
4. Pitch diameter of 1/2-20 UNF-2A (coated) threads (ASA B1.1-1960).
5. A chamfer (or undercut) on one or both ends of hexagonal portion is optional.
6. Minimum flat.
7. Seated height with lead bent at right angles.



Quality Semi-Conductors