

PLEASE CHECK WWW.MOLEX.COM FOR LATEST PART INFORMATION

Part Number: **0684251889**
Status: **Active**
Description: 4.95mm (.195") Pitch Wire-to-Board Receptacle Housing, with Positive Latch, 18 Circuits, Lower Polarization Type, Purple

Documents:

[Drawing \(PDF\)](#) [RoHS Certificate of Compliance \(PDF\)](#)
[Product Specification PS-68187-001 \(PDF\)](#)

General

Product Family	Crimp Housings
Series	<u>68425</u>
Product Name	N/A

Physical

Circuits (maximum)	18
Color - Resin	Violet
Gender	Female
Glow-Wire Compliant	No
Lock to Mating Part	Yes
Material - Resin	Nylon
Number of Rows	3
Packaging Type	Bag
Panel Mount	No
Pitch - Mating Interface (in)	0.195 In
Pitch - Mating Interface (mm)	4.95 mm
Polarized to Mating Part	Yes
Stackable	No
Temperature Range - Operating	-40°C to +120°C

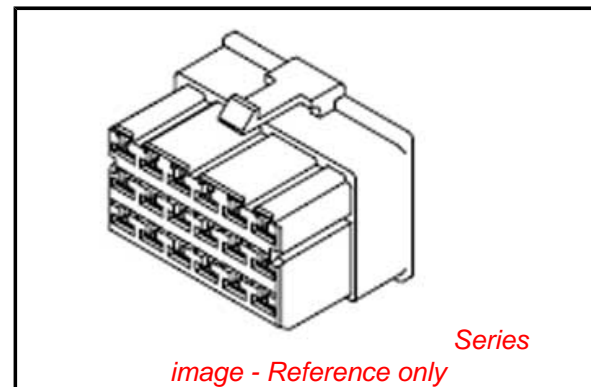
Electrical

Current - Maximum per Contact	5A
-------------------------------	----

Material Info

Reference - Drawing Numbers

Product Specification	PS-68187-001
Sales Drawing	SD-68425-001



EU RoHS

ELV and RoHS Compliant
REACH SVHC
 Not Reviewed
Halogen-Free Status

China RoHS



Not Reviewed

Need more information on product environmental compliance?

Email productcompliance@molex.com
 For a multiple part number RoHS Certificate of Compliance, [click here](#)

Please visit the [Contact Us](#) section for any non-product compliance questions.

Search Parts in this Series

[68425Series](#)

Mates With

[68187 PCB Header](#)

Use With

[57994 Terminal](#)

PLEASE CHECK WWW.MOLEX.COM FOR LATEST PART INFORMATION

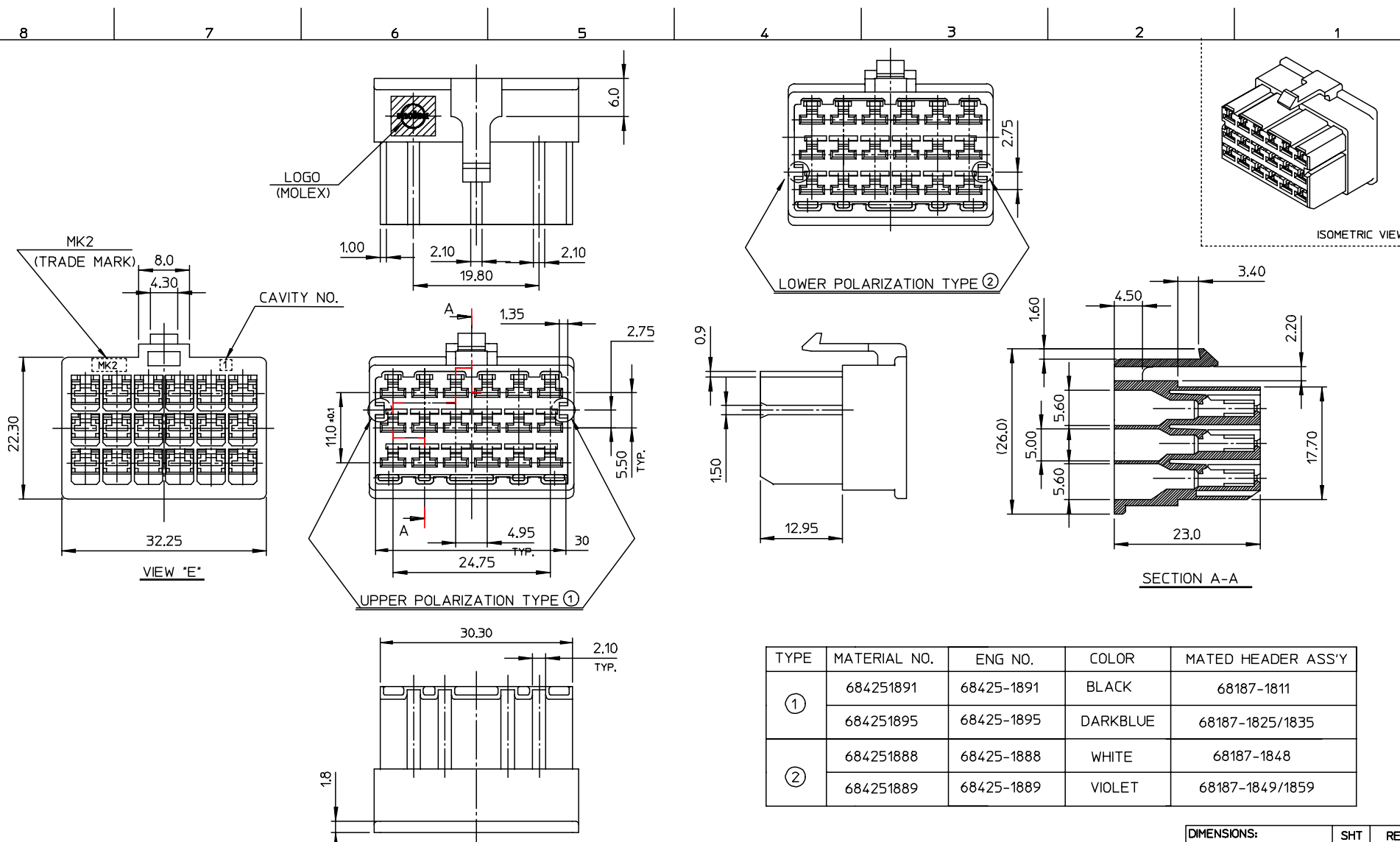
DWG. NO.
SD-68425-001

SIMILAR ITEM

PROJECT NO.

B

DO NOT SCALE DRAWING
DIMENSION IN METRIC



TYPE	MATERIAL NO.	ENG NO.	COLOR	MATED HEADER ASS'Y
①	684251891	68425-1891	BLACK	68187-1811
	684251895	68425-1895	DARKBLUE	68187-1825/1835
②	684251888	68425-1888	WHITE	68187-1848
	684251889	68425-1889	VIOLET	68187-1849/1859

NOTES

- 1. MATERIAL : POLYAMIDE66, UL94V-2
- 2. APPLICABLE TERMINAL : 57994-9802/9902

REVISED	ECN NO. KOR2004-0017	DRWN. C.B.CHIN 03/07/02	CHK: W.Y.YANG	APPR: C.W.LEE
B	DESCRIPTION	QUALITY SYMBOLS	GENERAL TOLERANCES: (UNLESS SPECIFIED)	

MAJOR	QUALITY SYMBOLS
CRITICAL	QUALITY SYMBOLS

4 PLACES	±0.	±-
3 PLACES	±0.10	±-
2 PLACES	±0.30	±-
1 PLACE	±0.25	±-
ANGULAR: ± 1 °		

SCALE 1:1	DESIGN UNITS	THIRD ANGLE PROJECTION
DRAWN BY & DATE	CHECKED BY & DATE	APPROVED BY & DATE

DIMENSIONS:		SHT	REV
TITLE: .110 W/B CONN. HOUSING-18P		REVISE ON CAD ONLY	
MOLEX INCORPORATED			
CAD FILENAME	MATERIAL NO.	DRAWING NO.	SHEET NO.
S684251891.MI	SEE TABLE	SD-68425-001	1 OF 1
DRAFT WHERE APPLICABLE MUST REMAIN WITHIN DIMENSIONS			SIZE B
THIS DRAWING CONTAINS INFORMATION THAT IS PROPRIETARY TO MOLEX INCORPORATED AND SHOULD NOT BE USED WITHOUT WRITTEN PERMISSION.			