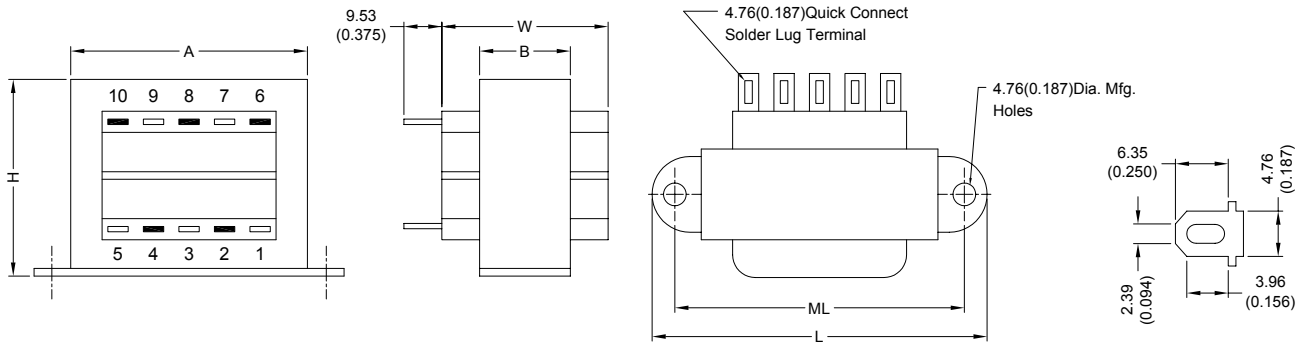


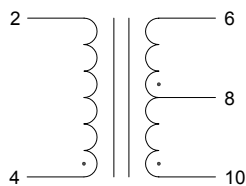
### 1. CONFIGURATION & DIMENSIONS :



UNIT : mm (inch)

SIZE	VA	L	W	H	A	B	ML	gram
7	56	93.68 (3.688)	46.05 (1.813)	57.15 (2.250)	68.28 (2.688)	27.00 (1.063)	79.38 (3.125)	771.11

### 2. SCHEMATIC :



" . " indicates polarity

### 3. ELECTRICAL CHARACTERISTICS (@ 25°C) :

- |                                      |                              |
|--------------------------------------|------------------------------|
| a. Primary Voltage                   | AC 115 V 60 Hz .             |
| b. No Load Primary Current           | Less Than 80mA .             |
| c. Secondary Voltage (±5%)           |                              |
| Pin 6-10 C.T. Pin 8                  | AC 137.6 V .                 |
| d. Secondary Load Current            | 0.50A .                      |
| e. Full Load Primary Current         | Less Than 620mA .            |
| f. Full Load Secondary Voltage (±5%) | 120V .                       |
| Pin 6-10 C.T. Pin 8                  |                              |
| g. DC Resistance                     |                              |
| Pin 2-4                              | Primary = 10.50 Ohm .        |
| Pin 6-8                              | Secondary-1 = 6.50 Ohm .     |
| Pin 8-10                             | Secondary-2 = 7.70 Ohm .     |
| h. Insulation Resistance             | DC 500V 100Meg Ohm Of More . |
| i. Withstand Voltage (Hi-Pot)        | AC 2500V 60Hz 1 Minutes .    |
| j. Temperature Rise                  | Less Than 60 Deg C .         |
| k. Core Size                         | EI-66 x 26.00 m/m .          |

#### l. Turns & Wire Gauge

- |           |            |           |                |         |
|-----------|------------|-----------|----------------|---------|
| Primary   | Pin 2-4    | 585       | Turns Diameter | 0.40 mm |
| Secondary | Pin 6-8-10 | 0-350-700 | Turns Diameter | 0.37 mm |



**RoHS Compliant**

NOTE : Specifications subject to change without notice. Please check our website for latest information.

25.02.2008



**SUPERWORLD ELECTRONICS (S) PTE LTD**