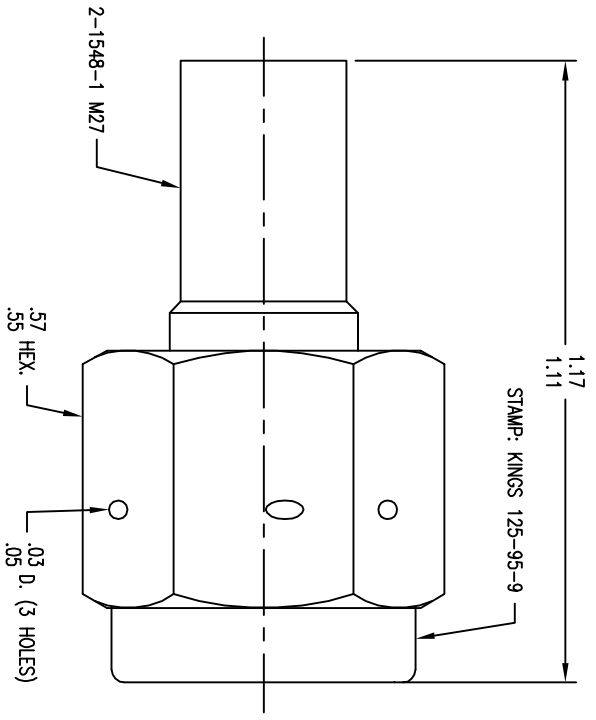


PART NO. 125-95-9



REVISIONS

ISSUE	CHANGES
E	ER 8354 RMS 05/29/08
F	ER 33571 COL 06/30/11

SALES DRAWING

THIS DRAWING, THE DESIGN AND IDEAS EMBODIED IN THE DRAWING TO WHICH IT RELATES, AND THE METHOD OF PRODUCING THE DESIGN AND THE PROCESS OF MANUFACTURING ELECTRONICS COMPONENTS ARE THE PROPERTY OF WINCHESTER ELECTRONICS CORPORATION. NO PART OF THIS DRAWING OR THE INFORMATION DISCLOSED TO ANYONE IN ANY MANNER WITHOUT THE CONSENT OF WINCHESTER ELECTRONICS CORPORATION.

SCALE 4:1  
APPROX SURFACE AREA  
WAS: E-17337 & E-19871  
USED ON  
CAGE CODE:91836

PLUG, TNC  
DRAWN KH DATE 06/01/92  
DESIGN JT DATE 06/02/92  
APPR.

**KINGS**  
by WINCHESTER  
Winchester Electronics  
62 Bernas Industrial  
Wallingford, CT 06492  
B  
SIZE

125-95-9

NOTES:

- FOR USE WITH BOEING BMS13-65 OG & ADAMS RUSSELL FC20Z CABLES.
- FOR CABLING INSTRUCTIONS SEE 3-546-1.
- FOR CRIMPING USE DIE KTH-2216.
- INTERFACE PER MIL-STD-348, FIG. 313-1.
- CENTER CONTACT (1-569-35MA9) SUPPLIED UNASSEMBLED.
- MARK PACKAGE: KINGS 125-95-9  
YRWM (DATE/LOCATION CODE)
- MATERIALS:  
INSULATOR: TEFLON, ASTM-D-1710  
K-GRIP SLEEVE: COM. BRONZE TUBE, ASTM B135  
OUTER CONTACT: BER. COPPER, ASTM-B-196  
GASKET: SILICONE RUBBER, A-A-59588  
C-RING: PHOSPHOR BRONZE, ASTM B103  
ALL OTHER METAL PARTS: BRASS, ASTM-B16
- FINISHES:  
CENTER CONTACT: .000050 MIN GOLD PER ASTM B488 OVER .000050 MIN NICKEL PER AMS-QQ-N-290(RoHS)  
ALL OTHER METAL PARTS: .000050 MIN NICKEL PLATE PER AMS-QQ-N-290 OVER .000050 MIN COPPER PER ASTM B734(RoHS)
- ELECTRICAL CHARACTERISTICS:  
NOMINAL IMPEDANCE: 50 OHMS  
WORKING VOLTAGE: 500 VRMS  
FREQUENCY RANGE: DC TO 11 GHz.  
VSWR: 1.30 MAX. .5-11 GHz.  
INSERTION LOSS: DC TO 2.5 GHz, 0.04 dB MAX  
2.5 TO 5.0 GHz, 0.105 dB MAX  
10. WEIGHT: 15.0 GRAMS (0.033 POUNDS)

UNLESS OTHERWISE SPECIFIED

- ALL DIMENSIONS IN INCHES [MILLIMETERS].
  - TOLERANCES:  
XXX ±.004 XX ±.010  
[.XXX ±.10] [.XX ±.25]  
FRACTIONS: X/Y ±.010 [.25]
- ★ CRITICAL DIMENSIONS ANGLES: ± 1°