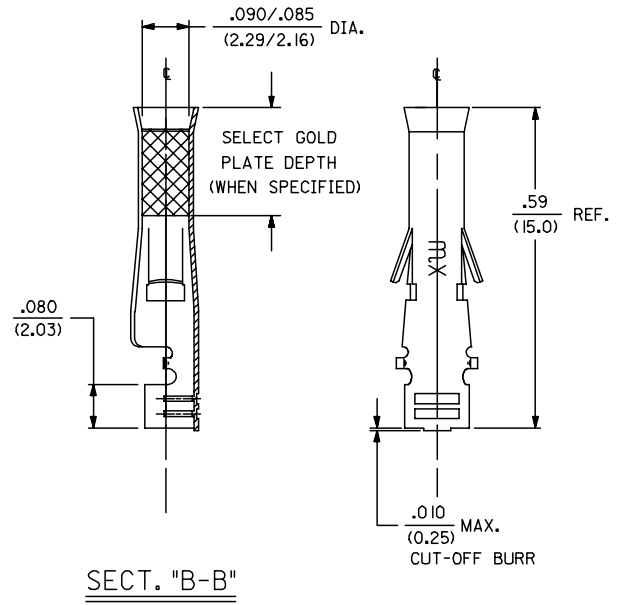
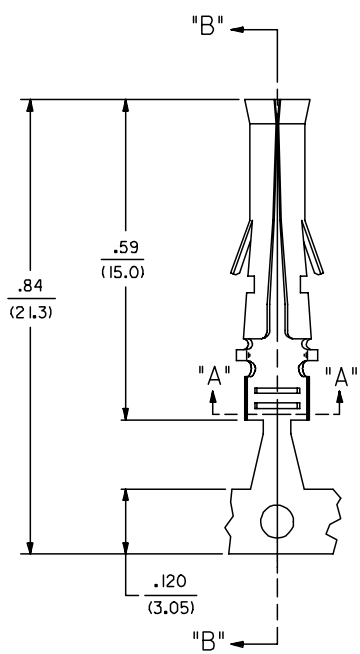
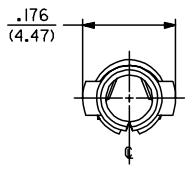
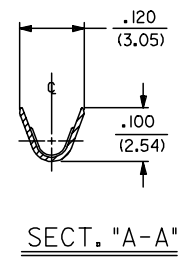
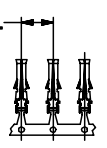


PART NO.	ENG. NO.
NOT TOOLED	42464-(P90)IL
02-09-1651	42464-(P90)I
NOT TOOLED	42464-(P550)IL
NOT TOOLED	42464-(P550)
NOT TOOLED	42464-(P558)IL
NOT TOOLED	42464-(P558)



LEGEND
 42464- (****)*
 P=PREPLATE BLANK=POSTPLATE
 FORM BLANK=CHAIN L=LOOSE
 FINISH CODE



- NOTES:
 1. MATERIAL: CARTRIDGE BRASS, ALLOY #C26000 .008/(0.20) THICK.
 2. FINISH CODES:
 901 HOT TIN DIP .000020/(0.00051) MIN.
 550 SELECT GOLD PLATE .000015/(0.00038) MIN. IN CONTACT AREA, OVER .000030/(0.00076) MIN. NICKEL OVERALL WITH .000010/(0.00025) MAX. GOLD FLASH OVERALL.
 558 SELECT GOLD PLATE .000030/(0.00076) MIN. IN CONTACT AREA, OVER .000050/(0.00127) MIN. NICKEL OVERALL WITH .000010/(0.00025) MAX. GOLD FLASH OVERALL.
 3. PRODUCT SPECIFICATION: NONE
 4. TERMINAL FOR USE WITH .093/(2.36) SERIES HOUSINGS AND WILL ACCEPT 16 THRU 20 AWG WIRE.
 5. PULL OUT FORCE: 20 LBS. MIN. RETENTION IN HOUSING.

REVISION	DESCRIPTION	QUALITY SYMBOLS
A1	UPDATE NOTES EC NO: UCP2006-2415 DRAWN: P. DDER 2006/05/16 CHKD: AEL/HAG 2006/05/22 APPR: FSM/TH 2006/05/22	

GENERAL TOLERANCES (UNLESS SPECIFIED)	
mm	INCH
4 PLACES ± .010	± .0004
3 PLACES ± .014	± .0005
2 PLACES ± 0.25	± .010
1 PLACE ± 0.35	± .014
ANGULAR ± 1/2°	

DIMENSION STYLE	
IN/MM	
DRAWN BY	DATE
GEP	02/09/89
CHECKED BY	DATE
RW	02/09/89
APPROVED BY	DATE
RAS	02/09/89
MATERIAL NO.	DOCUMENT NO.
SEE CHART	

SCALE	DESIGN UNITS	THIRD ANGLE PROJECTION
6:1	INCH	
.093/(2.36) DIA. SOCKET W/O INSULATION CRIMP FOR 16 THRU 20 AWG. WIRE		
MOLEX MOLEX INCORPORATED		
SHEET NO. 1 OF 1		SD-42464-*
THIS DRAFTING CONTAINS INFORMATION THAT IS PROPRIETARY TO MOLEX INCORPORATED AND SHOULD NOT BE USED WITHOUT WRITTEN PERMISSION		