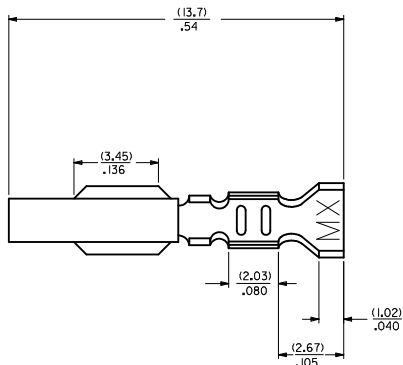


CHAIN FORM
SCALE 5:1



LEGEND

88 18 ** *-(*)*

MATERIAL
(.27)/.0106 THK.
BLANK= BRASS
A= PHOS BRONZE

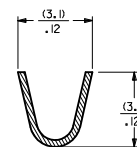
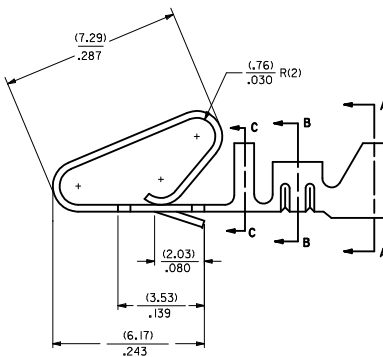
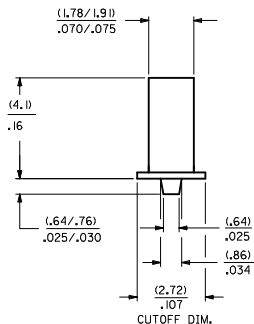
WINDING SPEC
BLANK= PER ES-339-B
L=LOOSE

PLATING
SEE NOTE 2

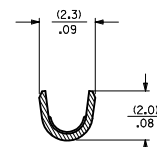
OPTION CODE
BLANK=AS SHOWN

EDP NO.	ENGINEERING NO.
	88 18-(555)
	88 18-(555)L
08-50-0008	88 18-(P909)
08-50-0023	88 18-(P909)L
40-01-1181	88 18-(999)
40-01-1182	88 18-A(999)
08-65-0128	88 18-A(555)
08-65-0129	88 18-A(555)L
08-52-0131	88 18-A(P909)
08-52-0132	88 18-A(P909)L
08-58-0135	88 18-A(550)
08-58-0136	88 18-A(550)L

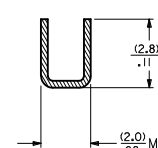
- NOTES:**
- MATERIAL: SEE LEGEND
 - FINISH:
(P909) OVERALL HOT TIN DIP: (0.00254)/.000100 MIN.
(550) SELECT GOLD: (0.000381)/.000015 MIN.
OVERALL GOLD FLASH: (0.000051)/.000002 MIN.
OVERALL NICKEL UNDERPLATE: (0.000761)/.000030 MIN.
(555) SELECT GOLD: (0.000381)/.000015 MIN.
OVERALL NICKEL UNDERPLATE: (0.000761)/.000030 MIN.
 - PRODUCT SPECIFICATION: PS-08-50
 - PACKAGING SPECIFICATION:
LOOSE TERMINALS: PER PK-2759-001
CHAIN FORM TERMINALS: NONE
 - CRIMP ACCEPTS 18-22 GA. WIRE WITH (2.791)/.110 MAX. INSULATION DIA.
 - DIMENSIONS GIVEN ACROSS CENTERLINES ARE SYMMETRICAL ABOUT THOSE CENTERLINES WITHIN HALF THE TOTAL TOLERANCE.
 - TERMINAL FOR USE IN 41695 AND 6345 HOUSINGS.
 - THIS PART CONFORMS TO CLASS B REQUIREMENTS OF COSMETIC SPECIFICATION PS-45499-002.



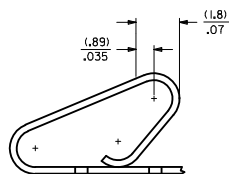
SECTION A-A



SECTION B-B



SECTION C-C



POST-PLATED SELECT GOLD LOCATION

REMOVE PARTS IEC NO: UCP2012-1821 DRAWN BY: DRW/MSTROH 2012/01/16 CHECKED BY: CHY/KH/KIPPER 2012/01/16 APPROVED BY: APPR/FSMITH 2012/02/02	QUALITY SYMBOLS ∇=0 ∇=0 ∇=0	GENERAL TOLERANCES (UNLESS SPECIFIED)		DIMENSION STYLE MM/IN	SCALE ---	DESIGN UNITS INCH	THIRD ANGLE PROJECTION
		4 PLACES ± mm ± INCH 3 PLACES ± .010 ± .010 2 PLACES ± 0.25 ± .014 1 PLACE ± 0.36 ± ---	DRAWN BY: JJS DATE: 02/02/193 CHECKED BY: PATEL DATE: 02/02/193 APPROVED BY: LENZ DATE: 02/02/193	MATERIAL NO. SEE CHART		DOCUMENT NO. SD-8818	SHEET NO. 1 OF 1
DRAFT WHERE APPLICABLE MUST REMAIN WITHIN DIMENSIONS		THIS DRAWING CONTAINS INFORMATION THAT IS PROPRIETARY TO MOLEX INCORPORATED AND SHOULD NOT BE USED WITHOUT WRITTEN PERMISSION					