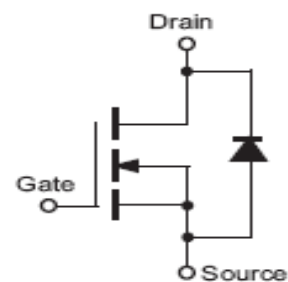


## IRF630

### N CHANNEL ENHANCEMENT MODE POWER MOS TRANSISTORS

#### FEATURE

N channel in a plastic TO220 package.  
They are intended for use in high speed switching, uninterruptible power supply, motor control, audio amplifiers, industrial actuators.  
DC-DC & DC-AC converters for telecom, industrial and consumer environment.  
Compliance to RoHS.



#### ABSOLUTE MAXIMUM RATINGS

Symbol	Ratings	Value	Unit
$V_{DS}$	Drain-Source Voltage	200	V
$I_{DS}$	Continuous Drain Current $T_C = 37^\circ\text{C}$	9	A
$I_{DM}$	Pulsed Drain Current $T_C = 25^\circ\text{C}$	36	
$I_{AR}$	Avalanche Current, Limited by $T_{jmax}$	9	
$E_{AS}$	Avalanche Energy, Single pulse $I_D = 2.4\text{ A}$ , $V_{DD} = 50\text{ V}$ , $R_{GS} = 25\ \Omega$ , $L = 56.3\ \mu\text{H}$ , $T_j = 25^\circ\text{C}$	250	mJ
$E_{AR}$	Avalanche Energy, Periodic Limited by $T_{jmax}$	7.4	
$V_{GS}$	Gate-Source Voltage	20	V
$R_{DS(on)}$	Drain-Source on Resistance	0.4	$\Omega$
$P_T$	Power Dissipation at Case Temperature $T_C = 25^\circ\text{C}$	74	W
$t_j$	Operating Temperature	-55 to +150	$^\circ\text{C}$
$t_{stg}$	Storage Temperature range	-55 to +150	

#### THERMAL CHARACTERISTICS

Symbol	Ratings	Value	Unit
$R_{thJC}$	Thermal Resistance, junction-case	1.7	$^\circ\text{C/W}$
$R_{thJA}$	Thermal Resistance, junction-ambient	62	



# IRF630

## ELECTRICAL CHARACTERISTICS

TC=25°C unless otherwise noted

Symbol	Ratings	Test Condition(s)	Min	Typ	Max	Unit
$V_{DS}$	Drain-Source Breakdown Voltage	$I_D = 250 \mu A, V_{GS} = 0 V$	200	-	-	V
$V_{GS(th)}$	Gate-threshold Voltage	$I_D = 1 mA, V_{GS} = V_{DS}$	2	3	4	V
$I_{DSS}$	Zero Gate Voltage Drain Current	$V_{DS} = 200 V, V_{GS} = 0 V$ $T_j = 25^\circ C$	-	-	10	$\mu A$
		$V_{DS} = 200 V, V_{GS} = 0 V$ $T_j = 125^\circ C$	-	-	50	
$I_{GSS}$	Gate-Source leakage Current	$V_{GS} = 20 V, V_{DS} = 0 V$	-	-	100	nA
$R_{DS(on)}$	Drain-Source on Resistance	$I_D = 5.4 A, V_{GS} = 10 V$	-	0.35	0.4	$\Omega$

## DYNAMIC CHARACTERISTICS

Symbol	Ratings	Test Condition(s)	Min	Typ	Max	Unit
$g_{fs}$	Transconductance	$V_{DS} = 2 * I_D * R_{DS(on)max}$ $I_D = 5 A$	3	4	-	S
$C_{ISS}$	Input Capacitance	$V_{GS} = 0 V, V_{DS} = 25 V$ $f = 1 MHz$	-	540	700	$\mu F$
$C_{OSS}$	Output Capacitance		-	90	120	
$C_{RSS}$	Reverse transfer Capacitance		-	35	50	
$t_{d(on)}$	Turn-on Delay Time	$V_{DD} = 100 V, V_{GS} = 10 V$ $I_D = 4.5 A, R_{GS} = 4.7 \Omega$	-	10	-	ns
$t_r$	Rise time		-	15	-	
$t_{d(off)}$	Turn-off Delay Time		-	25	-	
$t_f$	Fall Time		-	15	-	

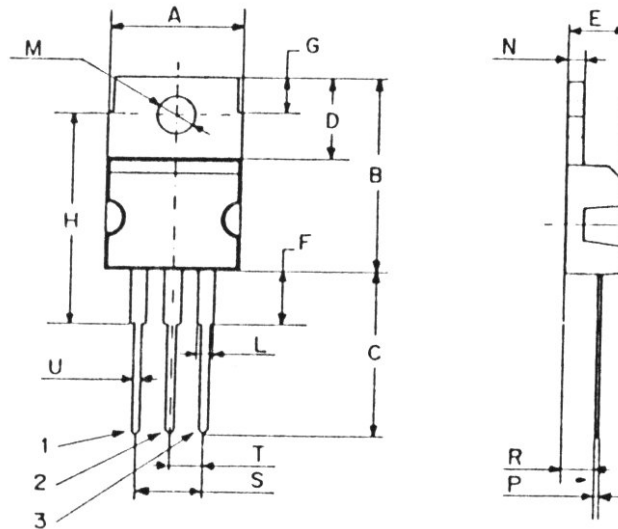
## REVERSE DIODE

Symbol	Ratings	Test Condition(s)	Min	Typ	Max	Unit
$I_S$	Inverse Diode Continuous Forward Current.	$T_C = 25^\circ C$	-	-	9	A
$I_{SM}$	Inverse diode direct current, pulsed.	$T_C = 25^\circ C$	-	-	36	
$V_{SD}$	Inverse Diode Forward voltage	$V_{GS} = 0 V, I_F = 9 A$	-	-	2	V
$T_{rr}$	Reverse Recovery Time	$V_R = 50 V, I_F = 9 A$ $di/dt = 100 A/\mu s$	-	170	-	ns
$Q_{rr}$	Reverse Recovery Charge	$T_C = 150^\circ C$	-	0.95	-	$\mu C$

## MECHANICAL DATA CASE TO-220

## IRF630

DIMENSIONS (mm)		
	Min.	Max.
A	9,90	10,30
B	15,65	15,90
C	13,20	13,40
D	6,45	6,65
E	4,30	4,50
F	2,70	3,15
G	2,60	3,00
H	15,75	17,15
L	1,15	1,40
M	3,50	3,70
N	-	1,37
P	0,46	0,55
R	2,50	2,70
S	4,98	5,08
T	2,49	2,54
U	0,70	0,90



Pin 1 :	Gate
Pin 2 :	Drain
Pin 3 :	Source

Revised September 2012

Information furnished is believed to be accurate and reliable. However, Comset Semiconductors assumes no responsibility for the consequences of use of such information nor for any infringement of patents or other rights of third parties which may result from its use. Data are subject to change without notice. Comset Semiconductors makes no warranty, representation or guarantee regarding the suitability of its products for any particular purpose, nor does Comset Semiconductors assume any liability arising out of the application or use of any product and specifically disclaims any and all liability, including without limitation consequential or incidental damages. Comset Semiconductors' products are not authorized for use as critical components in life support devices or systems.