

**P/N: VP2009 DATA SHEET****Feature**

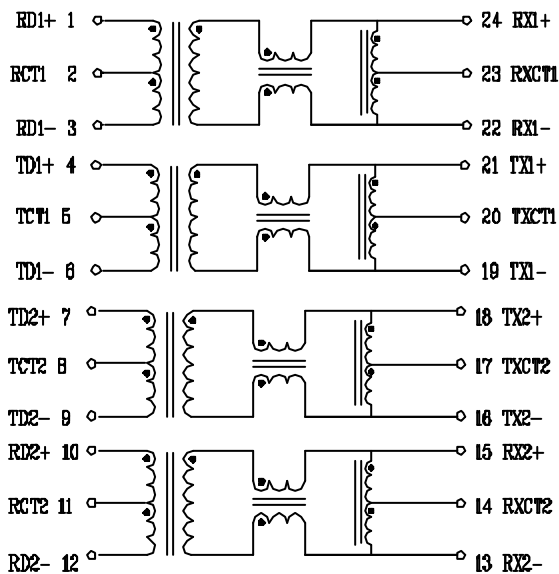
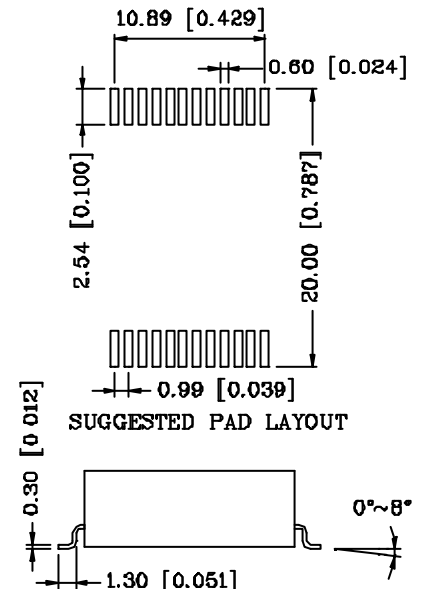
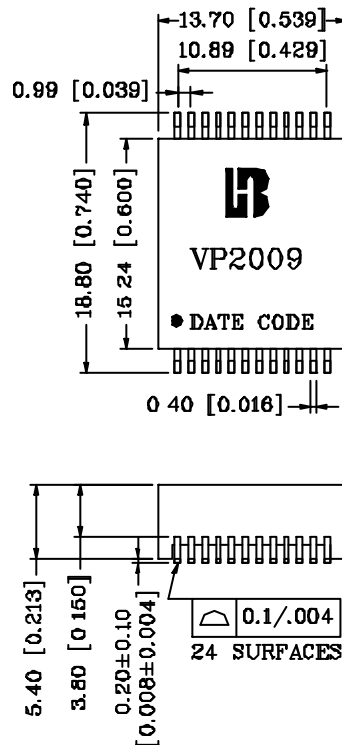
- IEEE 802.3af/ANSI X3.263 compliant performance.
- 350mA current capability.
- Designed for IP phone or switch applications.
- Compact footprint.
- The model offer Auto MDIX capability.
- Operating temperature range : 0 to +70 .
- Storage temperature range: -25 to +125 .

Electrical Specifications @ 25° C

Part Number	Turns Ratio (±5%)		Cross talk (dB Min)			HI-POT (Vrms)
	TX	RX	30 MHz	60 MHz	100 MHz	
VP2009	1CT: 1	1CT: 1	-43	-37	-33	1500

Continue

Part Number	Insertion Loss (dB Max)	Return Loss (dB Min)				DCMR (dB Min) TX/RX		
		1-100MHz	1-30MHz	40MHz	50 MHz	60-80MHz	30MHz	60MHz
VP2009	-1.1	-16	-14	-13	-12	-43	-37	-33

Schematic**Mechanical**

Units: mm [Inches]
 Tolerance: xx x0±0.25 [0.010]
 0.xx±0.05 [0.002]