

PLEASE CHECK WWW.MOLEX.COM FOR LATEST PART INFORMATION

Part Number: **0473004000**
Status: **Active**
Overview: slimline serial ata odd connectors
Description: 1.00mm(.039"), 1.27mm (.050") Pitch Slimline Serial ATA Plug for Optical Disk Drive, Right Angle, SMT, Gold (Au) Flash Plating, with Pegs, Lead-free

Documents:

[3D Model](#) [Product Specification PS-47300-001 \(PDF\)](#)
[Drawing \(PDF\)](#) [RoHS Certificate of Compliance \(PDF\)](#)

Agency Certification

CSA LR 19980

General

Product Family PCB Headers
 Series [47300](#)
 Application Board-to-Board
 Comments SMT Type
 Overview slimline serial ata odd connectors
 Product Name Serial ATA, Slimline Serial ATA

Physical

Breakaway No
 Circuits (Loaded) 13
 Circuits (maximum) 13
 Durability (mating cycles max) 500
 First Mate / Last Break Yes
 Flammability 94V-0
 Glow-Wire Compliant No
 Guide to Mating Part Yes
 Keying to Mating Part Yes
 Lock to Mating Part No
 Material - Plating Mating Gold
 Material - Plating Termination Tin
 Material - Resin High Temperature Thermoplastic
 Number of Rows 1
 Orientation Right Angle
 PCB Locator Yes
 PCB Retention Yes
 Packaging Type Embossed Tape on Reel
 Pitch - Mating Interface (in) 0.039 In, 0.050 In
 Pitch - Mating Interface (mm) 1.00 mm, 1.27 mm
 Pitch - Term. Interface (in) 0.039 In, 0.050 In
 Pitch - Term. Interface (mm) 1.00 mm, 1.27 mm
 Plating min: Mating (µin) 2
 Plating min: Mating (µm) 0.05
 Plating min: Termination (µin) 39
 Plating min: Termination (µm) 1
 Polarized to Mating Part Yes
 Polarized to PCB Yes
 Stackable No
 Temperature Range - Operating -35°C to +85°C
 Termination Interface: Style Surface Mount

Electrical

Current - Maximum per Contact 1.5A

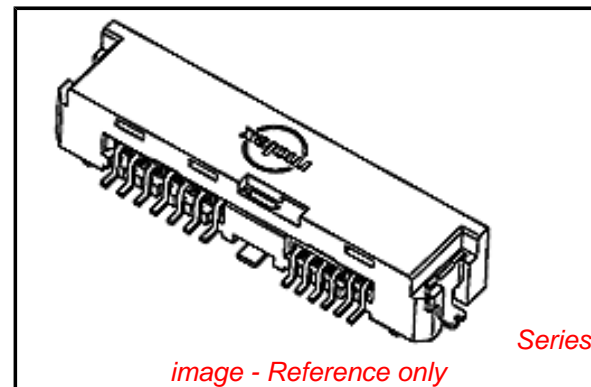


image - Reference only

EU RoHS

**ELV and RoHS
 Compliant**
**REACH SVHC
 Not Reviewed**
**Halogen-Free
 Status
 Not Reviewed**

China RoHS



**Need more information on product
 environmental compliance?**

Email productcompliance@molex.com
 For a multiple part number RoHS Certificate of Compliance, [click here](#)

Please visit the [Contact Us](#) section for any non-product compliance questions.

Search Parts in this Series

[47300Series](#)

Mates With

[47300 Slimline Serial ATA Plug](#)

Voltage - Maximum

15V DC

Material Info

Reference - Drawing Numbers

Packaging Specification

PK-47300-001

Product Specification

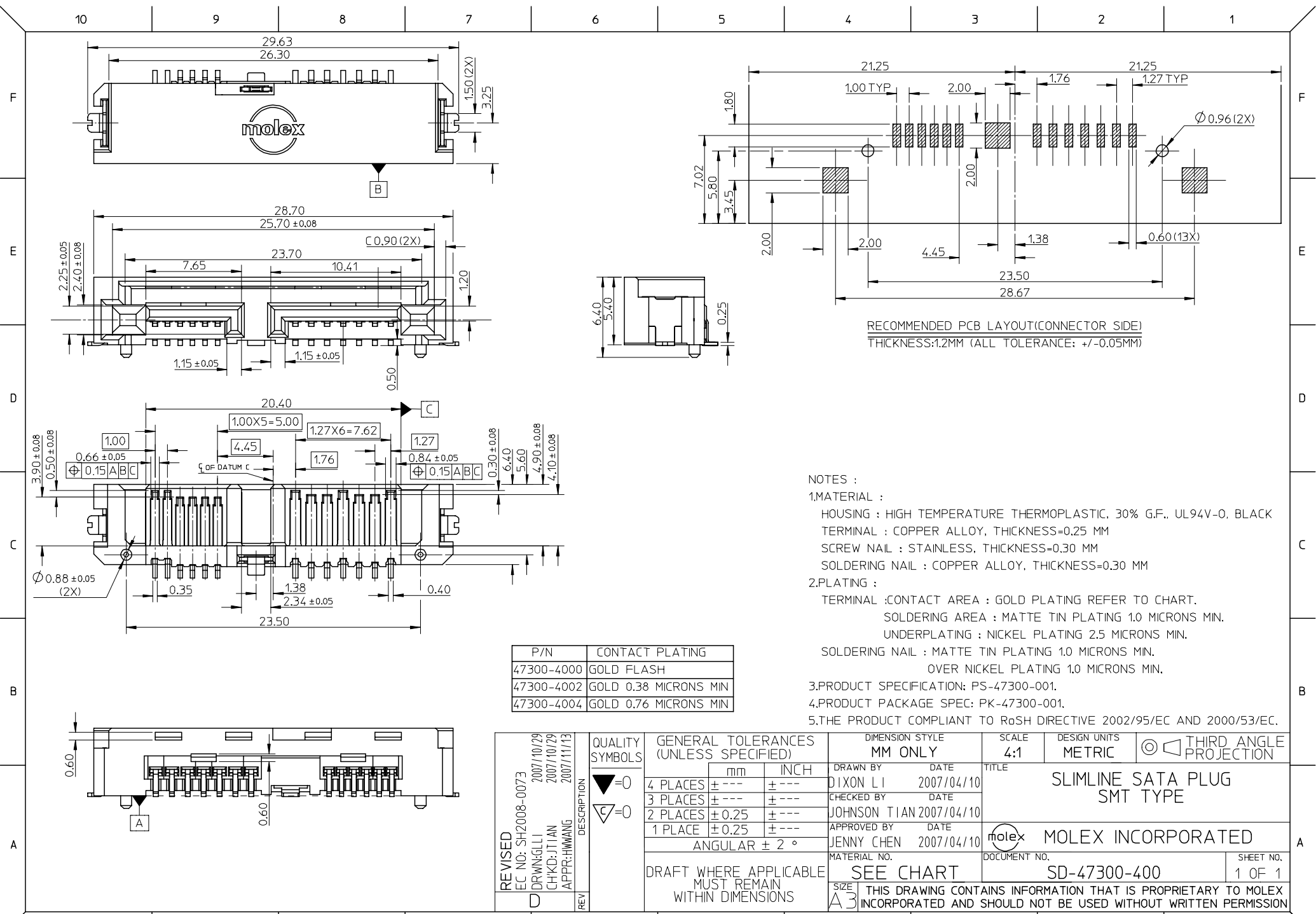
PS-47300-001

Sales Drawing

SD-47300-400

This document was generated on 05/26/2010

PLEASE CHECK WWW.MOLEX.COM FOR LATEST PART INFORMATION



RECOMMENDED PCB LAYOUT(CONNECTOR SIDE)
THICKNESS:1.2MM (ALL TOLERANCE: +/-0.05MM)

NOTES :

- MATERIAL :
HOUSING : HIGH TEMPERATURE THERMOPLASTIC, 30% G.F., UL94V-0, BLACK
TERMINAL : COPPER ALLOY, THICKNESS=0.25 MM
SCREW NAIL : STAINLESS, THICKNESS=0.30 MM
SOLDERING NAIL : COPPER ALLOY, THICKNESS=0.30 MM
- PLATING :
TERMINAL :CONTACT AREA : GOLD PLATING REFER TO CHART.
SOLDERING AREA : MATTE TIN PLATING 1.0 MICRONS MIN.
UNDERPLATING : NICKEL PLATING 2.5 MICRONS MIN.
SOLDERING NAIL : MATTE TIN PLATING 1.0 MICRONS MIN.
OVER NICKEL PLATING 1.0 MICRONS MIN.
- PRODUCT SPECIFICATION: PS-47300-001.
- PRODUCT PACKAGE SPEC: PK-47300-001.
- THE PRODUCT COMPLIANT TO RoSH DIRECTIVE 2002/95/EC AND 2000/53/EC.

P/N	CONTACT PLATING
47300-4000	GOLD FLASH
47300-4002	GOLD 0.38 MICRONS MIN
47300-4004	GOLD 0.76 MICRONS MIN

REVISED	EC NO: SH2008-0073	DESCRIPTION
	DRWN:GLLI	
	CHKD:JTIAN	
	APPR:HWANG	
D	REV	

QUALITY SYMBOLS	$\nabla=0$	GENERAL TOLERANCES (UNLESS SPECIFIED)		
	$\sphericalangle=0$			
		mm	INCH	
		4 PLACES	± ---	± ---
		3 PLACES	± ---	± ---
		2 PLACES	± 0.25	± ---
		1 PLACE	± 0.25	± ---
		ANGULAR ± 2 °		
DRAFT WHERE APPLICABLE MUST REMAIN WITHIN DIMENSIONS				

DIMENSION STYLE		SCALE	DESIGN UNITS	THIRD ANGLE PROJECTION
MM ONLY		4:1	METRIC	
DRAWN BY	DATE	TITLE		
DIXON LI	2007/04/10	SLIMLINE SATA PLUG SMT TYPE		
CHECKED BY	DATE	MOLEX INCORPORATED		
JOHNSON TIAN	2007/04/10	SD-47300-400		
APPROVED BY	DATE	SHEET NO.		
JENNY CHEN	2007/04/10	1 OF 1		
MATERIAL NO.		DOCUMENT NO.		
SEE CHART				