

PLEASE CHECK WWW.MOLEX.COM FOR LATEST PART INFORMATION

Part Number: [0359030065](#)
Status: **Active**
Overview: [bulb sockets](#)
Description: 3.60mm (.141") Front Seal for Horn Connector, 2 Circuit, Red

Documents:

Drawing (PDF)	Product Specification PS-35028-003 (PDF)
Product Specification PS-35028-002 (PDF)	RoHS Certificate of Compliance (PDF)

General

Product Family	Accessories
Series	35903
Component Type	Retainer
Overview	bulb sockets
Product Name	Bulb Socket

Physical

Breakaway	No
Circuits (Loaded)	2
Gender	N/A
Lock to Mating Part	No
Number of Rows	0
Packaging Type	Bag
Polarized to Mating Part	N/A
Temperature Range - Operating	-40°C to +120°C

Material Info

Reference - Drawing Numbers

Product Specification	PS-35028-002, PS-35028-003
Sales Drawing	SD-35903-0045

EU RoHS

**ELV and RoHS
Compliant**

REACH SVHC

Not Reviewed

Halogen-Free

Status

Halogen-Free

China RoHS



**Need more information on product
environmental compliance?**

Email productcompliance@molex.com
 For a multiple part number RoHS Certificate of
 Compliance, [click here](#)

Please visit the [Contact Us](#) section for any
 non-product compliance questions.

Search Parts in this Series

[35903Series](#)

Use With

PLEASE CHECK WWW.MOLEX.COM FOR LATEST PART INFORMATION

8 7 6 5 4 3 2 1

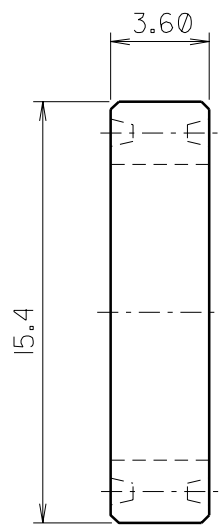
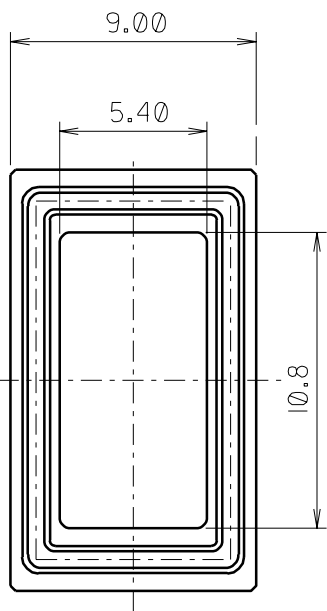
PROJECT NO. 2 CKTS HORN CONN. SIMILAR ITEM EDP NO. SEE NOTE ENG. NO. SD 35903-0045 SD 35903-0065



DESCRIPTION	ENG NO.	EDP NO.
SILICON RUBBER	E 35903-0045	35-903-0045
OIL SEAL	E 35903-0065	35-903-0065

NOTE

- 1.MATERIAL : SILICON RUBBER.
- 2.COLOR : RED
- 3.MATE WITH E 35130-0201 HOUSING.



DO NOT SCALE DRAWING DIMENSION IN METRIC

LTR		REVISION RECORD	ECN	DR/CHK	C.Y. DATE	ASS'Y PART	QTY/REEL OR PACK	SURFACE AREA	MATERIAL	WIRE RANGE	GENERAL TOLERANCES	MOLEX-KOREA CO.,LTD.
						DESCRIPTION ENG.NO.	BULK	MM ²	DIMENSION CLASSIFICATION	AWG:	DIM. :	
						FEMALE HOUSING E 35130-0201			<input checked="" type="checkbox"/> : CRITICAL <input checked="" type="checkbox"/> : MAJOR <input type="checkbox"/> : MINOR () : REFERENCE	MM ² :	ANGLE :	REVISE ONLY ON CAD SYSTEM
						DIE NO.			DRAWN BY	INSULATION RANGE	TITLE:	
						WIRE CRIMP WIDTH			C.Y.CHO		FRONT SEAL FOR 2 CKTS HORN CONN.	
						APPL FEED			CHK'D BY		ENG.NO.	
						WBDW			SCALE	NONE	SD 35903-0045 ,SD 35903-0065	REV A
						IBDW						

8 7 6 5 4 3 2 1 MK-9

SD35903F.DGN