

PLEASE CHECK WWW.MOLEX.COM FOR LATEST PART INFORMATION

Part Number: **0190030140**
Status: **Active**
Description: InsulKrimp™ Quick Disconnect, Female, Continuous Molded Strip, Tab 4.75mm (.187") x 0.51mm (.020")

Documents:

[Drawing \(PDF\)](#) [RoHS Certificate of Compliance \(PDF\)](#)
[Product Specification PS-19902-008 \(PDF\)](#)

General

Product Family	Quick Disconnects
Series	<u>19003</u>
Comments	Funnel Entry
Crimp Quality Equipment	Yes
Product Name	InsulKrimp™
Type	Quick Disconnect

Physical

Barrel Type	Closed
Color - Resin	Natural
Gender	Female
Glow-Wire Compliant	No
Insulation	Nylon (PA)
Lock to Mating Part	None
Material - Metal	Brass
Material - Plating Mating	Tin
Material - Plating Termination	Tin
Material - Resin	Nylon
Orientation	Straight
Packaging Type	Reel
Plating min: Mating (µin)	160
Plating min: Mating (µm)	4
Plating min: Termination (µin)	160
Plating min: Termination (µm)	4
Polarized to Mating Part	No
Tab Thickness	0.51mm (.020")
Tab Width	4.75mm (.187")
Temperature Range - Operating	-65°C to +105°C
Termination Interface: Style	Crimp or Compression
Wire Size AWG	24, 26

Electrical

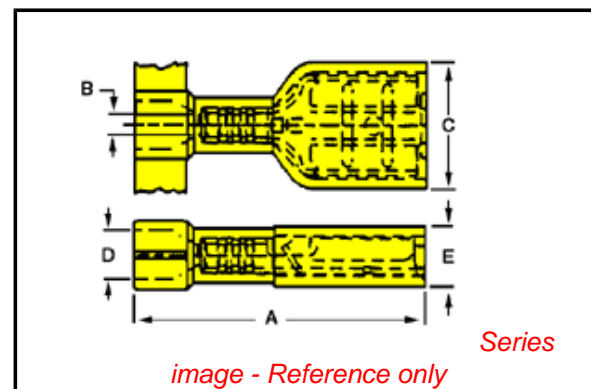
Voltage - Maximum	600V
-------------------	------

Material Info

Old Part Number	M-2210VC
-----------------	----------

Reference - Drawing Numbers

Product Specification	PS-19902-008
Sales Drawing	SD-19003-003



EU RoHS

ELV and RoHS Compliant
REACH SVHC
 Not Reviewed
Halogen-Free Status
 Not Reviewed

China RoHS



Need more information on product environmental compliance?

Email productcompliance@molex.com
 For a multiple part number RoHS Certificate of Compliance, [click here](#)

Please visit the [Contact Us](#) section for any non-product compliance questions.

Search Parts in this Series

19003Series

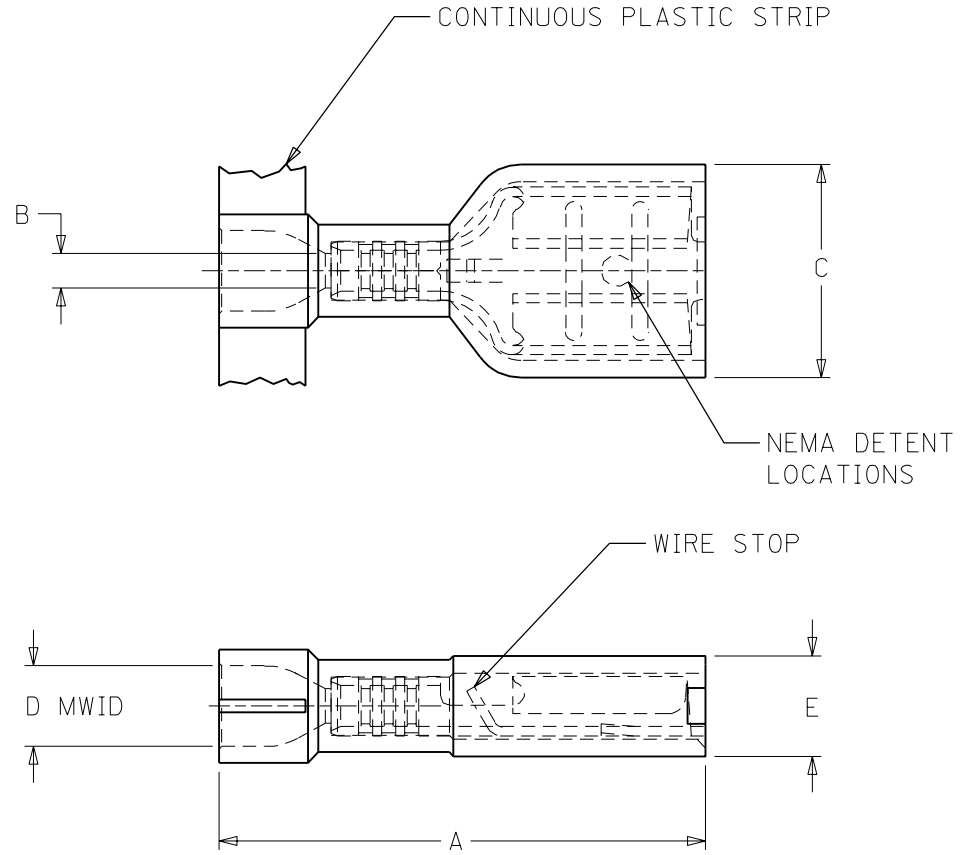
Application Tooling | FAQ

Tooling specifications and manuals are found by selecting the products below. Crimp Height Specifications are then contained in the Application Tooling Specification document.

Global

Description	Product #
Mini-Mac™ Applicator	<u>0638830600</u>

MOLEX-ETC PART NO.	INS. COLOR	WIRE RANGE AWG	FITS MALE TAB SIZE	STOCK THICK.	"A" MAX.	"B" MIN.	"C" MAX.	"D" MWID	"E" MAX.	CARRIER CONFIGURATION
190030138	YELLOW	26-24	.187X.020	.016/0.41	.78/19.8	.030/0.76	.316/8.03	.075/1.91	.160/4.06	LOOSE PIECE
190030139	YELLOW	26-24	.187X.020	.016/0.41	.78/19.8	.030/0.76	.316/8.03	.075/1.91	.160/4.06	TAPE MOUNT
190030140	YELLOW	26-24	.187X.020	.016/0.41	.78/19.8	.030/0.76	.316/8.03	.075/1.91	.160/4.06	PLASTIC STRIP
190030141	YELLOW	26-24	.187X.032	.016/0.41	.78/19.8	.030/0.76	.316/8.03	.075/1.91	.160/4.06	LOOSE PIECE
190030142	YELLOW	26-24	.187X.032	.016/0.41	.78/19.8	.030/0.76	.316/8.03	.075/1.91	.160/4.06	TAPE MOUNT
190030143	YELLOW	26-24	.187X.032	.016/0.41	.78/19.8	.030/0.76	.316/8.03	.075/1.91	.160/4.06	PLASTIC STRIP



- 1. MATERIAL: TERMINAL: BRASS
PLATING: ELECTRO-TIN
INSULATION: NYLON 6/6 94V-0 RATING
COLOR: SEE CHART
- 2. MWID = MAXIMUM WIRE INSULATION DIAMETER
- 3. ALL DIMENSIONS = INCHES/MM

SALES DRAWING

RELEASE TO PROD. EC NO. ETC2001-0365 DRWN:HEB 01/06/11 CHK: RWD 01/06/11 APPR: RWD 01/06/11	QUALITY SYMBOLS MAJOR $\blacktriangledown = 0$ CRITICAL $\blacktriangle = 0$	GENERAL TOLERANCES: (UNLESS SPECIFIED)		SCALE NO: NE	DESIGN UNITS <input type="checkbox"/> mm <input checked="" type="checkbox"/> INCH	THIRD ANGLE PROJECTION <input checked="" type="checkbox"/> mm <input type="checkbox"/> INCH	SHT	REV	
				mm	INCH	DRAWN BY & DATE		REVISIONS	
				4 PLACES $\pm 0.---$	$\pm .---$	HEB 01/06/07		TITLE: FIQD FEMALE, INSULKRIMP	
				3 PLACES $\pm 0.---$	$\pm .005$	CHECKED BY & DATE		94V-0 MATERIAL	
		2 PLACES ± 0.13	$\pm .01$	RWD 01/06/07		26-24 AWG			
		1 PLACE ± 0.25	$\pm .---$	APPROVED BY & DATE		MOLEX INCORPORATED			
		ANGULAR: $\pm 1/2^\circ$		RWD 01/06/07		MATERIAL NO. DRAWING NO.			
		DRAFT WHERE APPLICABLE MUST REMAIN WITHIN DIMENSIONS		CAD FILENAME		SEE TABLE SD-19003-003			
				S19003003.DGN		SHEET NO. 1 OF 1			
				THIS DRAWING CONTAINS INFORMATION THAT IS PROPRIETARY TO MOLEX INCORPORATED AND SHOULD NOT BE USED WITHOUT WRITTEN PERMISSION.		SIZE B			