

**SERIES 04**  
**4PST**

**FEATURES**

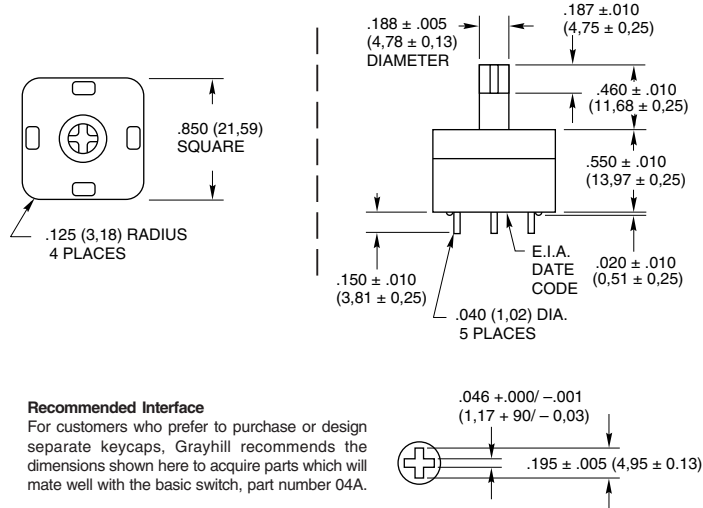
- Joy Stick Action
- Position Locator On CRT Screens
- Moves Cursor On Menu Display



**DIMENSIONS** In Inches (and millimeters)

**Basic Switch**

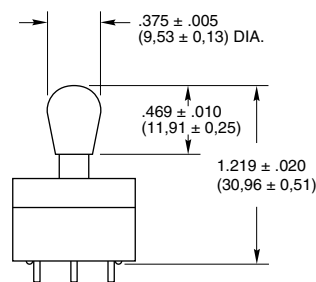
04A



**Recommended Interface**  
 For customers who prefer to purchase or design separate keycaps, Grayhill recommends the dimensions shown here to acquire parts which will mate well with the basic switch, part number 04A.

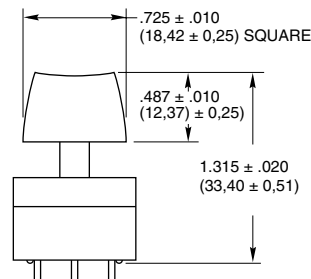
**Bat Handle**

04A-B01



**Keycap**

04A-K01



**SPECIFICATIONS**

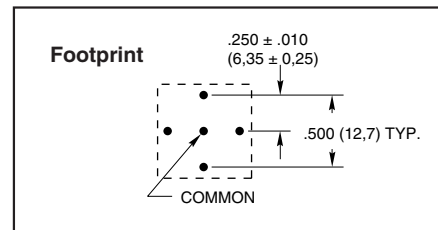
**Rating Criteria**

- Rated:** Make and break 250 mA at 115 Vac or 125 mA at 220 Vac resistive load for 500,000 operations
- Contact Resistance:** 25 milliohms maximum on a new switch
- Insulation Resistance:** 1,000 megohms at 100 Vdc
- Dielectric Strength:** 500 Vac RMS minimum
- Operating Temperature:** -40°C to +85°C

**Materials and Finishes**

- Base, Cover and Switch Actuator:** Polyester (Black)
- Terminals:** Brass, gold-plated over nickel
- Shorting Bar:** Phosphor bronze, gold-plated over nickel
- Spring:** Tinned music wire
- Keycap:** ABS or equivalent
- Bat-Handle:** ABS

**CIRCUITRY**



**ORDERING INFORMATION**

Description	Part No.
Basic Switch	<b>04A</b>
Switch with Arrowhead Keycap	<b>04A-K01</b>
Switch with Bat-Handle	<b>04A-B01*</b>

\*Shipped with bat handle permanently attached.

**Available from your local Grayhill Distributor.**  
 For prices and discounts, contact a local Sales Office, an authorized local Distributor or Grayhill.

Pushbutton Switches