

New Jersey Semi-Conductor Products, Inc.

20 STERN AVE.
 SPRINGFIELD, NEW JERSEY 07081
 U.S.A.

TELEPHONE: (201) 376-2921
 (212) 227-6005
 FAX: (201) 376-8966

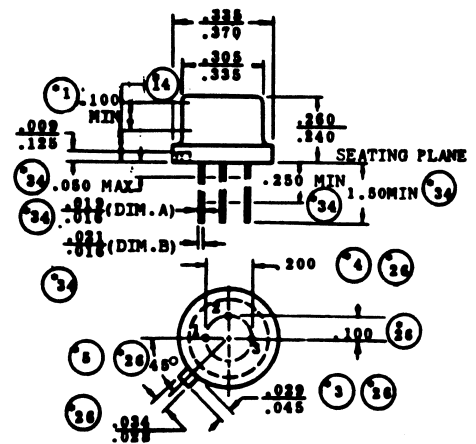
PARAMETERS

2N2324A

SCR, V(DRM) = 100 V TO 199.9 V

Description: SCR, V(DRM) = 100 V to 199.9 V

Manufacturer.....	
Mil/High-Rel? (Y/N).....	
V(drm) Max.....	100
It(stat) Max. (A).....	1.6
@Temp. (test) (xC).....	85#
Supp Curr. I(TSM).....	15%
Firing Char-Igt Max.....	75u
Firing Char-Vgt Max.....	900m
Id(off) Max. (A).....	100u
@Temp. (test) (xC).....	125#
I(h) Max. (A).....	3.0m
V(T) Max.....	2.0
@It (A).....	1.6
Dv/Dt Worst Case.....	
t(switch) Off Typ. Time (S)...	
@It (test) (A).....	
t(switch) Off Typ. Time (S)...	
Oper. Temp (xC) Min.....	-65
Oper. Temp (xC) Max.....	125#
Pkg Style.....	T0-5
Surface Mounted (Y/N).....	N



Case Temperature % @ above 125xC 2 It(rms)



Quality Semi-Conductors