



# TAI-SAW TECHNOLOGY CO., LTD.

No. 3, Industrial 2nd Rd., Ping-Chen Industrial District,  
Taoyuan, 324, Taiwan, R.O.C.

TEL: 886-3-4690038 FAX: 886-3-4697532

E-mail: [tstsales@mail.taisaw.com](mailto:tstsales@mail.taisaw.com) Web: [www.taisaw.com](http://www.taisaw.com)

## Approval Sheet For Product Specification

Issued Date:

Product Name: SAW Filter 228.1MHz SMD 7.0x5.0mm

TST Parts No.:TB0573A

Customer Parts No.:\_\_\_\_\_

Company: _____
Division: _____
Approved by : _____
Date: _____

Checked by: \_\_\_\_\_ Andy Lee

Approval by: \_\_\_\_\_ Francis Chen

Date: \_\_\_\_\_ 2007/12/28



# TAI-SAW TECHNOLOGY CO., LTD.

No. 3, Industrial 2nd Rd., Ping-Chen Industrial District,  
Taoyuan, 324, Taiwan, R.O.C.

TEL: 886-3-4690038 FAX: 886-3-4697532

E-mail: [tstsales@mail.taisaw.com](mailto:tstsales@mail.taisaw.com) Web: [www.taisaw.com](http://www.taisaw.com)

SAW Filter 228.1 MHz SMD 7.0mmX5.0mm

MODEL NO.: TB0573A

REV. NO. 1

## A. MAXIMUM RATING:

1. Operating Temperature: -40°C to +85°C
2. Storage Temperature: -40°C to +85°C
3. Maximum Input Power : 10dBm

RoHS Compliant  
 Lead free  
 Lead-free soldering

## B. ELECTRICAL CHARACTERISTICS:

1. Ambient Temperature: 25 °

Item		Min.	Typical	Max.	
Center frequency	Fc	MHz	-	228.1	-
Insertion loss at Fc		dB	-	10.0	11.0
Bandwidth at -1.0dB		MHz	27.0	29.0	-
Amplitude Ripple (Fc ± 12.5 MHz)		dB	-	0.3	1.0
Group Delay Ripple (Fc ± 12.5 MHz)		nS	-	20	-
Attenuation (Reference level from minimum Insertion loss )					
100 MHz ~204.1 MHz		dB	40	50	-
304.1 MHz ~ 209.5 MHz		dB	25	45	-
247.5 MHz ~ 252.5 MHz		dB	25	36	-
252.5 MHz ~ 350 MHz		dB	38	42	-
Temp Coefficient		ppm/°C	-	-93	-

## C. FREQUENCY CHARACTERISTICS :

### 1.S21 Response

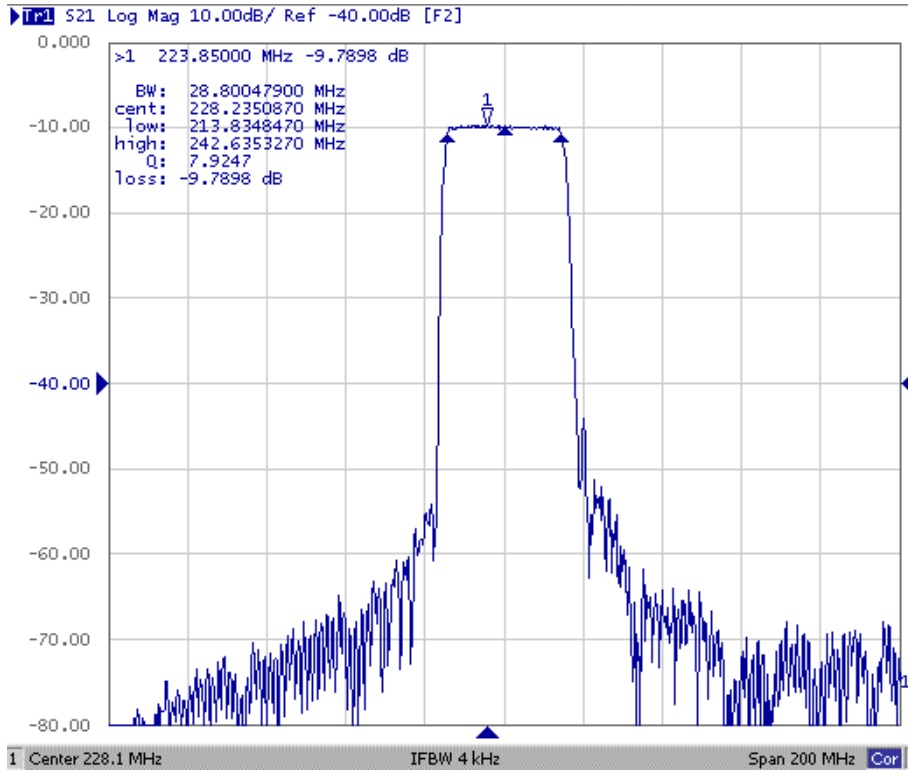


Fig1. Horizontal: 20MHz/Div Vertical: 10dB/Div

### 2. Passband Ripple

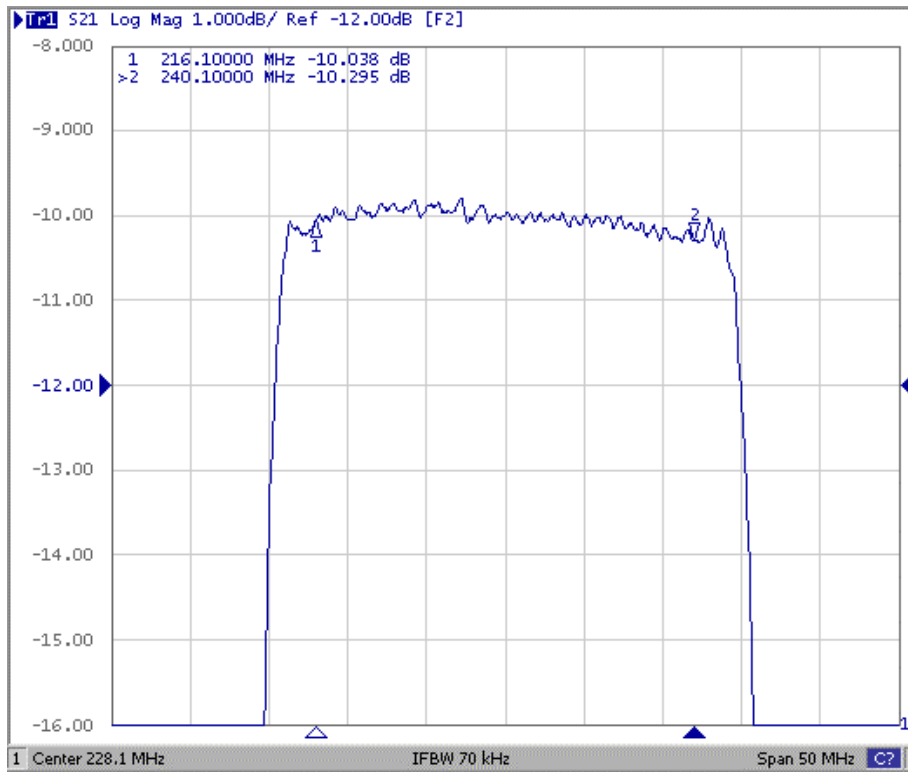


Fig2. Horizontal: 5MHz/Div Vertical: 1dB/Div

### 3. Group Delay Ripple

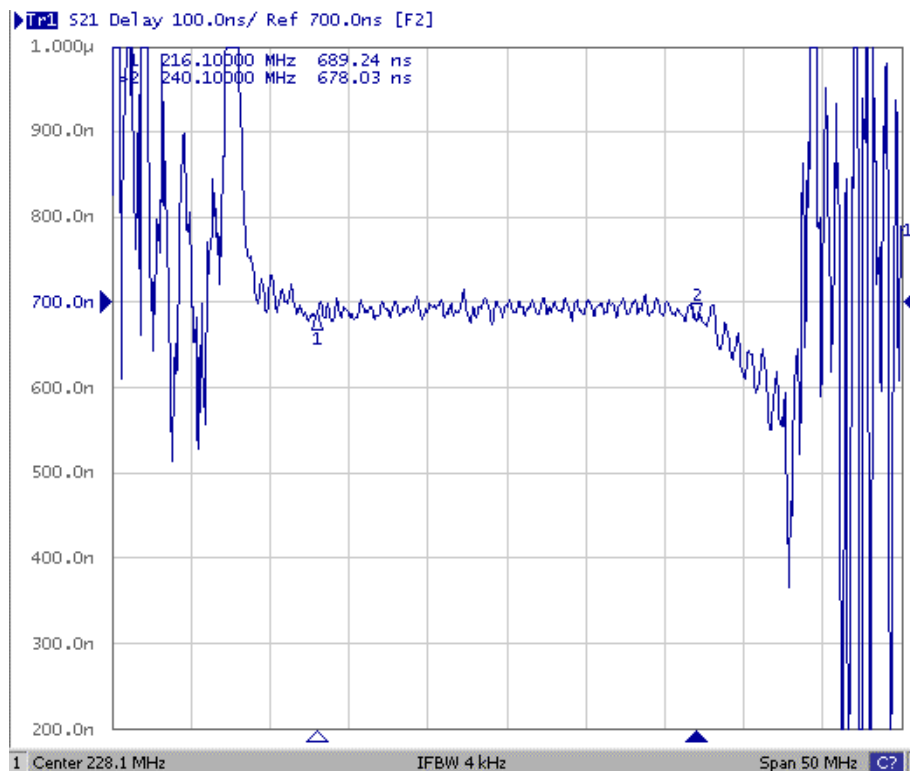
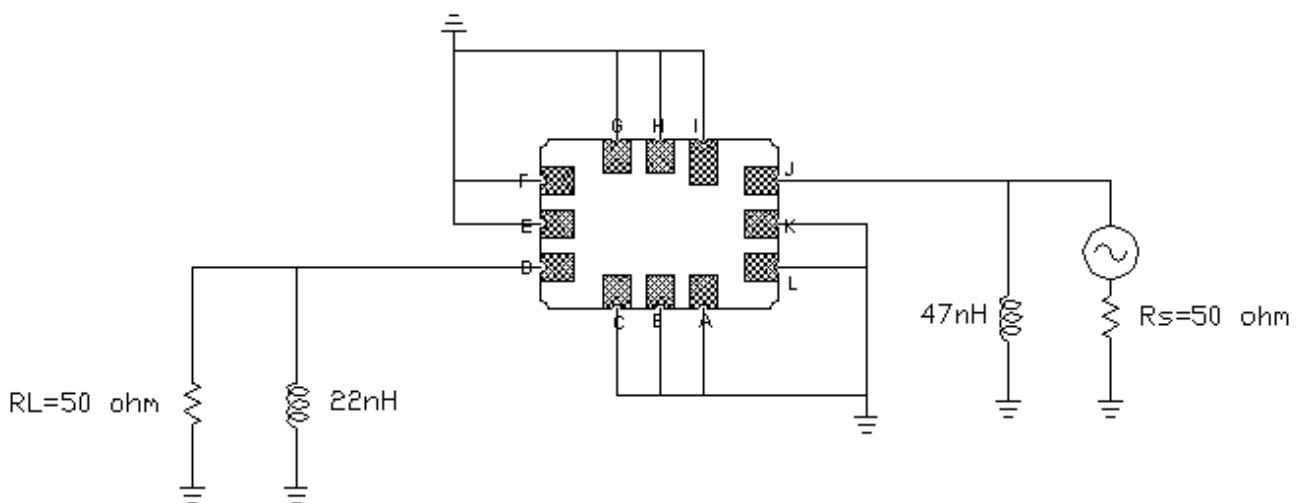


Fig3. Horizontal: 5MHz/Div Vertical: 100nS/Div

### D. MEASUREMENT CIRCUIT

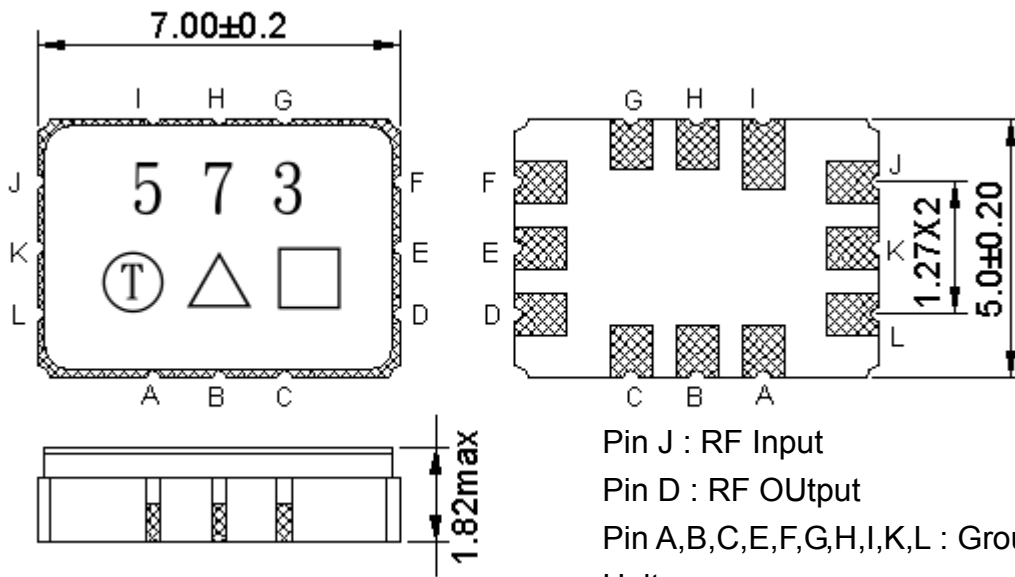
1. Single ended input 50 ohm to Single ended Output 50 ohm

:



Note: The matching structure will change according to different test fixture.

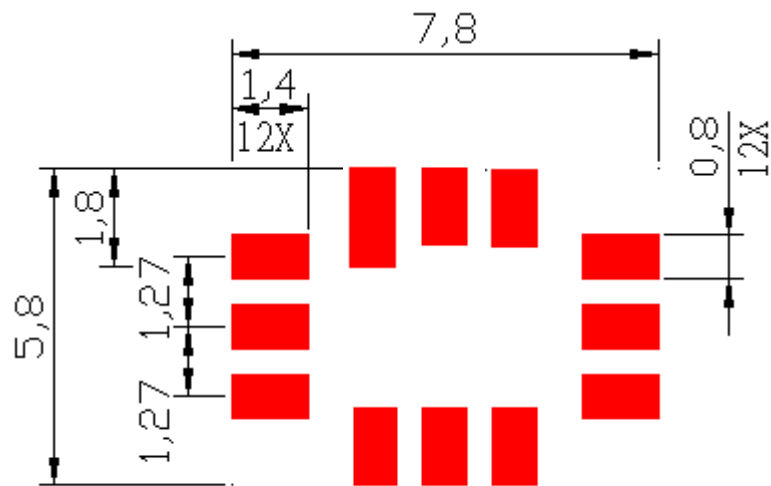
**E.OUTLINE DRAWING:**



Pin J : RF Input  
 Pin D : RF Output  
 Pin A,B,C,E,F,G,H,I,K,L : Ground  
 Unit: mm  
 □ : Week Code (Follow the table from planner each year)  
 △ : Product / Year Code

Year	2005 2009	2006 2010	2007 2011	2008 2012
Product Code	B	b	<u>B</u>	<u>b</u>

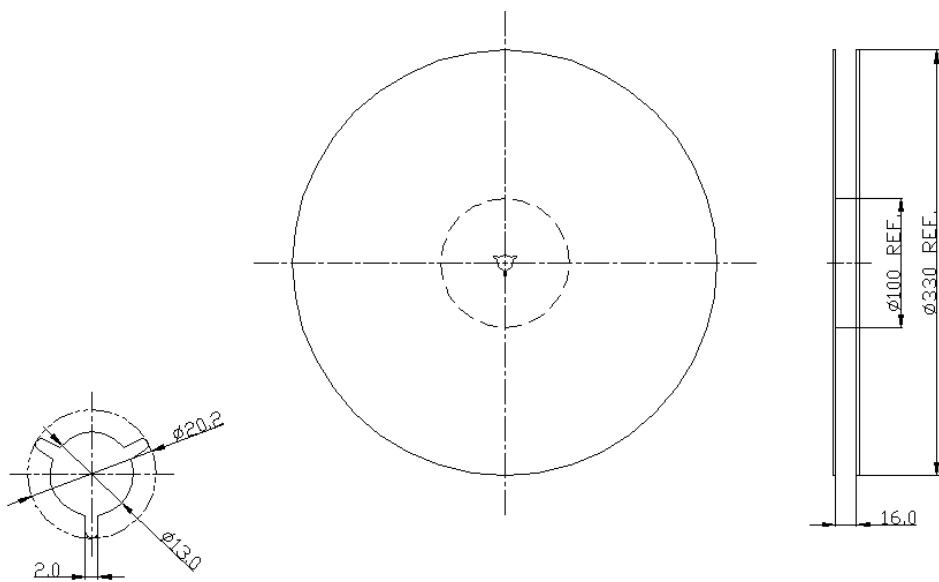
**F. PCB Footprint**



Unit: mm

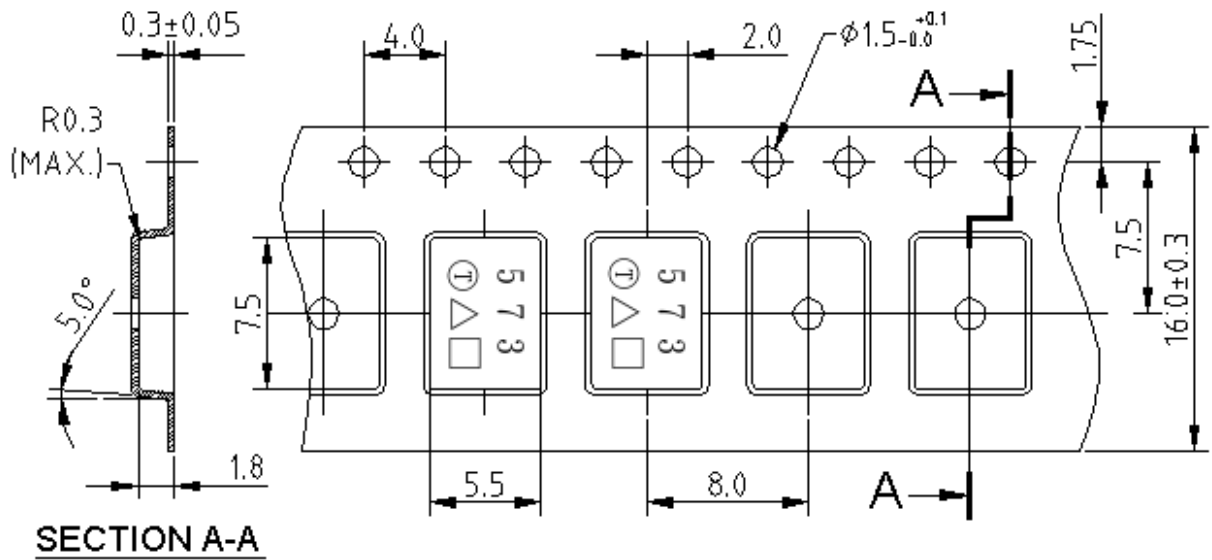
**G. PACKING:**

**1. REEL DIMENSION**



Unit: mm

## 2. TAPE DIMENSION



Unit: mm

## H. RECOMMENDED REFLOW PROFILE :

