



# TAI-SAW TECHNOLOGY CO., LTD.

No. 3, Industrial 2nd Rd., Ping-Chen Industrial District,  
Taoyuan, 324, Taiwan, R.O.C.

TEL: 886-3-4690038 FAX: 886-3-4697532

E-mail: [tstsales@mail.taisaw.com](mailto:tstsales@mail.taisaw.com) Web: [www.taisaw.com](http://www.taisaw.com)

## Approval Sheet For Product Specification

Issued Date:

Product Name: SAW Filter 512.2MHz SMD 7.0x5.0mm

TST Parts No.:TB0577A

Customer Parts No.:\_\_\_\_\_

Company: _____
Division: _____
Approved by : _____
Date: _____

Checked by: \_\_\_\_\_ Andy Lee

Approval by: \_\_\_\_\_ Francis Chen

Date: \_\_\_\_\_ 2007/12/28



# TAI-SAW TECHNOLOGY CO., LTD.

No. 3, Industrial 2nd Rd., Ping-Chen Industrial District,  
Taoyuan, 324, Taiwan, R.O.C.

TEL: 886-3-4690038 FAX: 886-3-4697532

E-mail: [tstsales@mail.taisaw.com](mailto:tstsales@mail.taisaw.com) Web: [www.taisaw.com](http://www.taisaw.com)

SAW Filter 512.2 MHz SMD 7.0mmX5.0mm

MODEL NO.: TB0577A

REV. NO. 1

## A. MAXIMUM RATING:

1. Operating Temperature: -40°C to +85°C
2. Storage Temperature: -40°C to +85°C
3. Maximum Input Power : 10dBm

RoHS Compliant  
Lead free  
Lead-free soldering

## B. ELECTRICAL CHARACTERISTICS:

1. Ambient Temperature: 25 °

Item		Min.	Typical	Max.	
Center frequency	Fc	MHz	-	512.2	-
Insertion loss at Fc		dB	-	11.8	13.5
Bandwidth at -1.0dB		MHz	27.0	30.0	-
Amplitude Ripple (Fc ± 11.5 MHz)		dB	-	0.6	1.0
Group Delay Ripple (Fc ± 11.5 MHz)		nS	-	30	-
Attenuation (Reference level from minimum Insertion loss )					
	300 MHz ~ 487.5MHz	dB	40	48	-
	540 MHz ~ 650 MHz	dB	36	42	-
Temp Coefficient		ppm/°C	-	-93	-

## D. FREQUENCY CHARACTERISTICS :

### 1.S21 Response

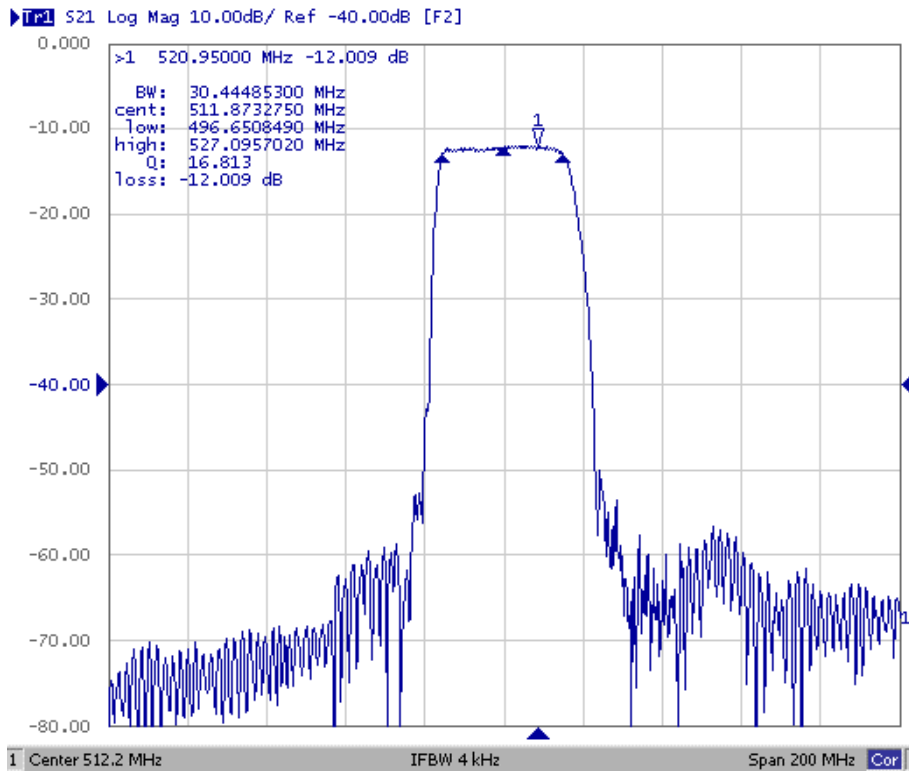


Fig1. Horizontal: 20MHz/Div Vertical: 10dB/Div

### 2. Passband Ripple

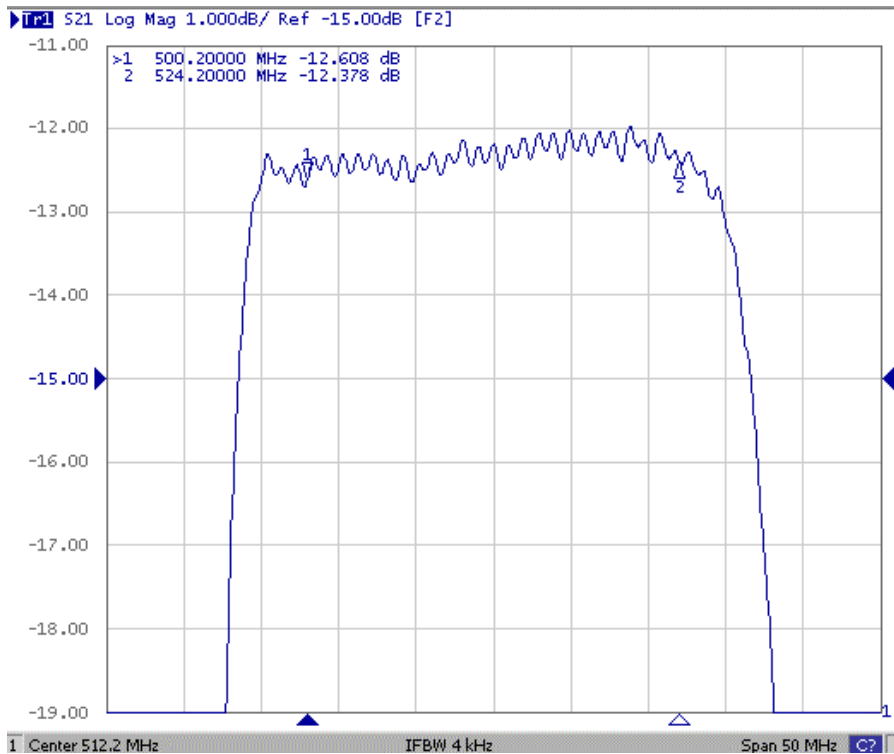


Fig2. Horizontal: 5MHz/Div Vertical: 1dB/Div

### 3. Group Delay Ripple

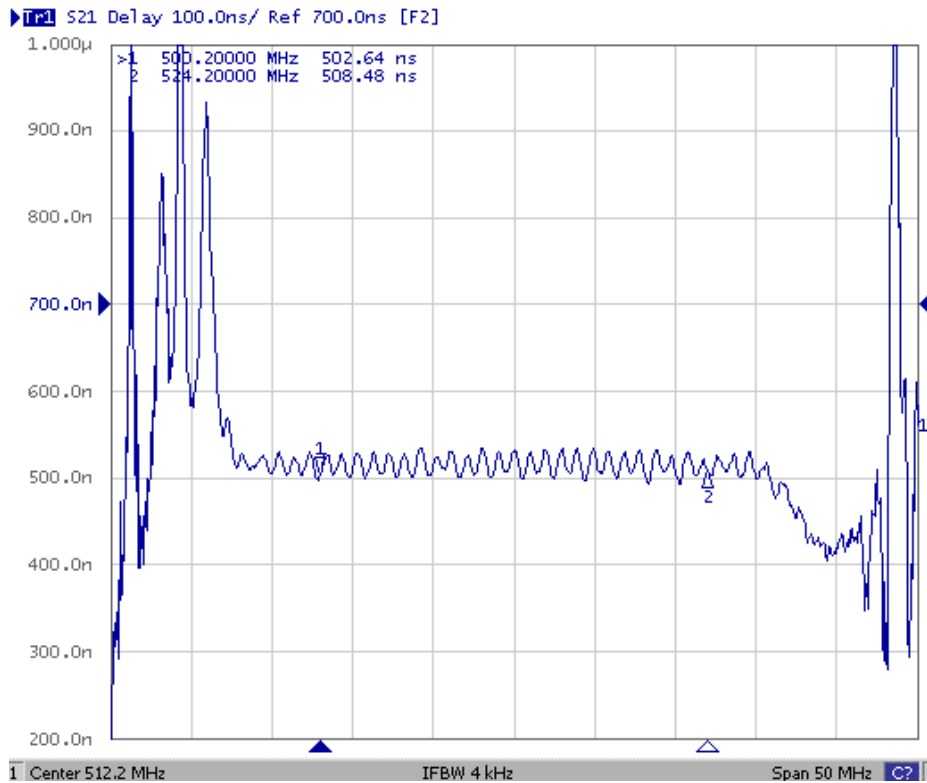
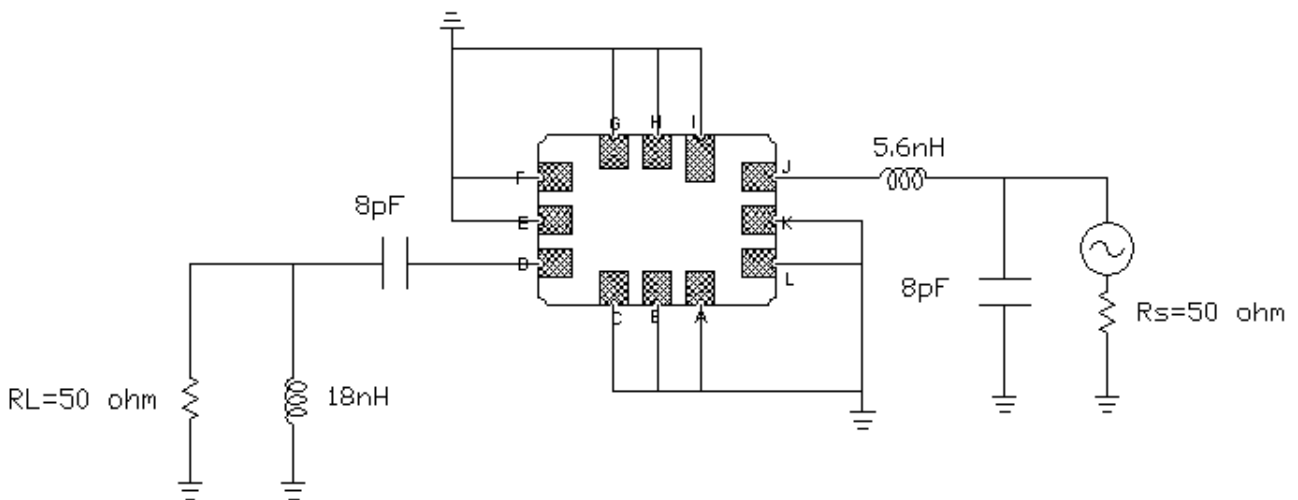


Fig3. Horizontal: 5MHz/Div Vertical: 100nS/Div

### E. MEASUREMENT CIRCUIT

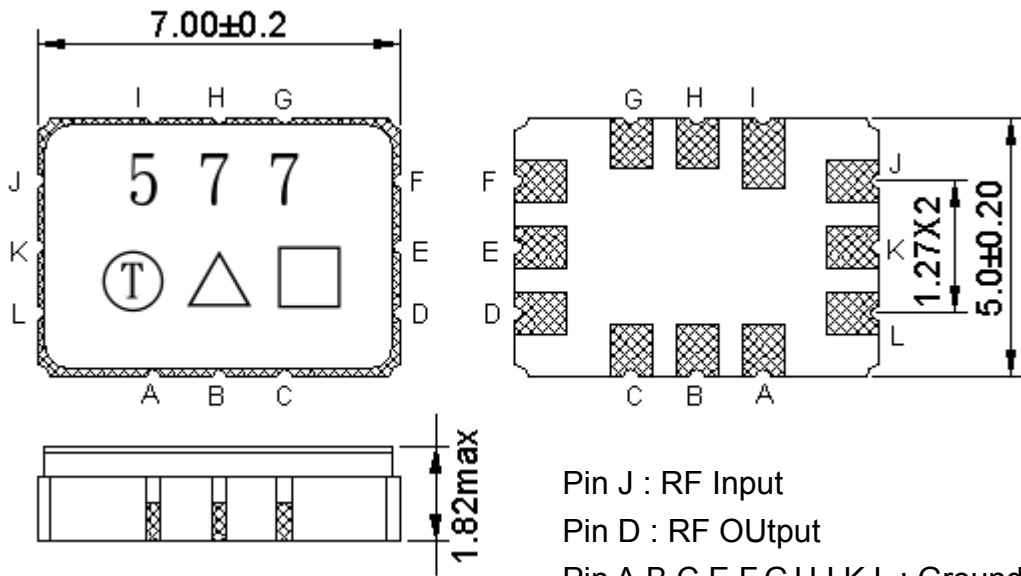
1. Single ended input 50 ohm to Single ended Output 50 ohm

:



Note: The matching structure will change according to different test fixture.

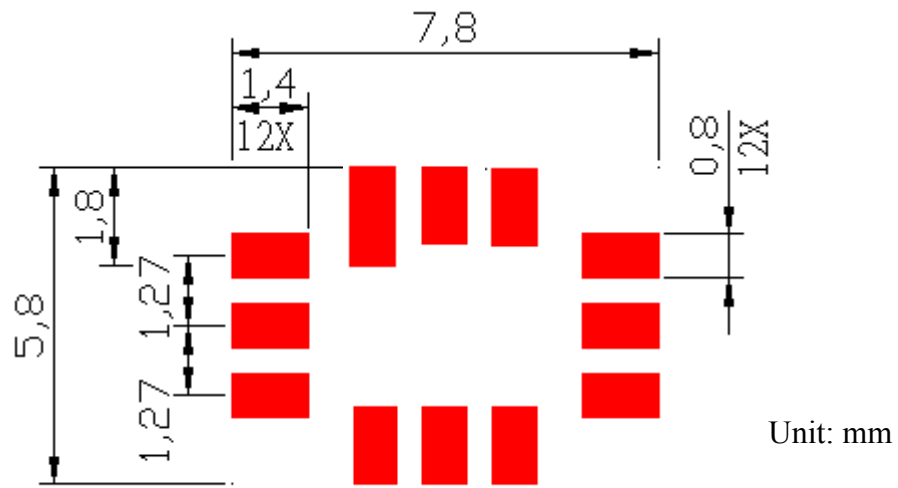
F.OUTLINE DRAWING:



- Pin J : RF Input
- Pin D : RF Output
- Pin A,B,C,E,F,G,H,I,K,L : Ground
- Unit: mm
- : Week Code (Follow the table from planner each year)
- △ : Product / Year Code

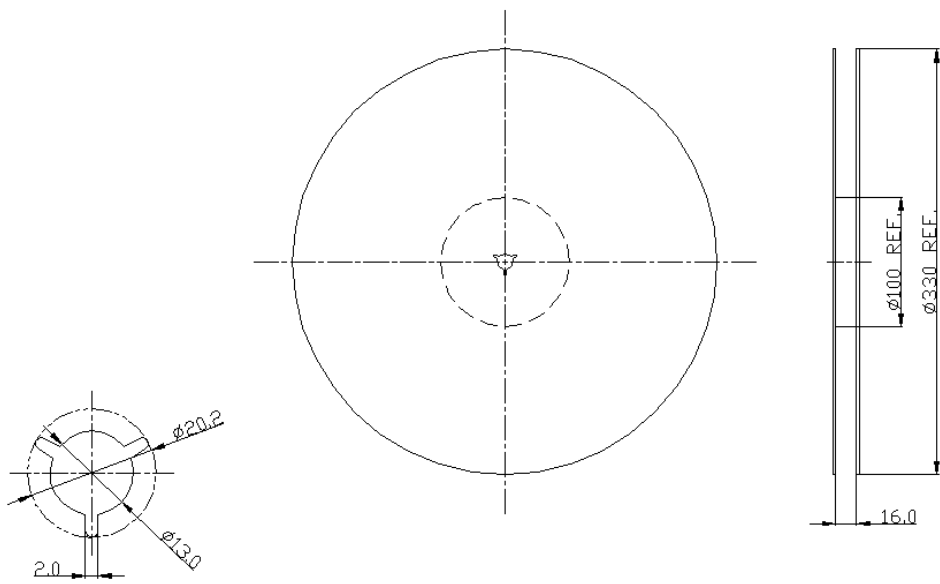
Year	2005 2009	2006 2010	2007 2011	2008 2012
Product Code	B	b	<u>B</u>	<u>b</u>

### G. PCB Footprint



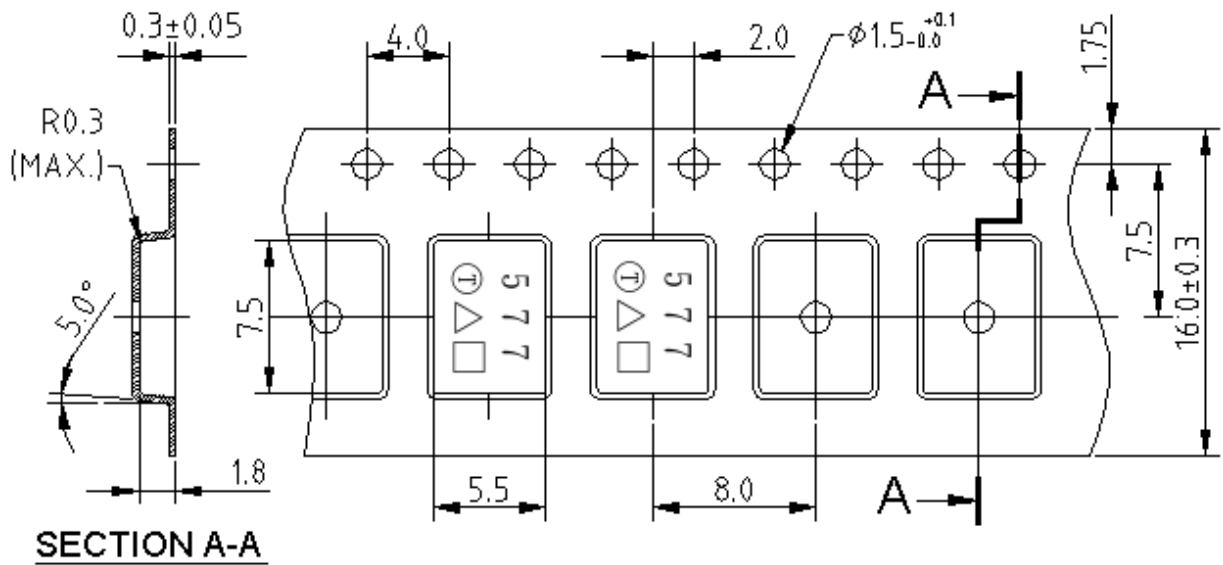
### H. PACKING:

#### 1. REEL DIMENSION



Unit: mm

## 2. TAPE DIMENSION



Unit: mm

## I. RECOMMENDED REFLOW PROFILE\_:

