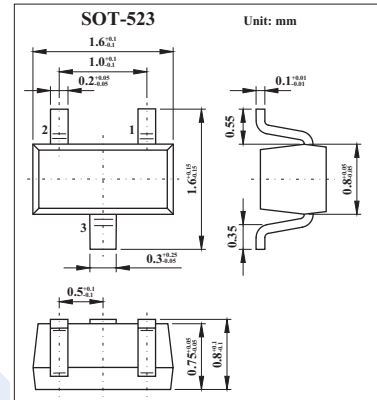
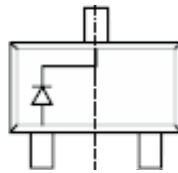


Surface Mount Fast Switching Diode

KAS21T(BAS21T)

■ Features

- Ultra-Small Surface Mount Package
- Fast Switching Speed
- For General Purpose Switching Applications
- High Conductance



■ Absolute Maximum Ratings Ta = 25°C

Parameter	Symbol	Rating	Unit
Peak repetitive reverse voltage	V _{RRM}	250	V
Working peak reverse voltage	V _{RWM}	200	
DC blocking voltage	V _R	200	
RMS reverse voltage	V _{R(RMS)}	141	V
Average rectified output current	I _O	200	mA
Forward Continuous Current	I _{FM}	400	mA
Non-Repetitive Peak Forward Surge Current @ t = 1.0 μs	I _{FSM}	2.5	A
@ t = 1.0s		0.5	
Repetitive Peak Forward Surge Current	I _{FRM}	625	mA
Power dissipation	P _D	150	mW
Typical Thermal Resistance Junction to Ambient	R _{θJA}	833	°C/W
Operating and storage temperature range	T _j , T _{stg}	-65 to +150	°C

■ Electrical Characteristics Ta = 25°C

Parameter	Symbol	Testconditions	Min	Typ	Max	Unit
Maximum Forward Voltage	V _{FM}	I _F = 100mA I _F = 200mA			1.0 1.25	V
Maximum Peak Reverse Current @ Rated DC Blocking Voltage	I _{RM}	T _j = 25°C T _j = 100°C			100 15	nA μA
Junction Capacitance	C _J	V _R = 0, f = 1.0MHz			5.0	pF
Reverse Recovery Time	t _{rr}	I _F = I _R = 30mA, I _{rr} = 0.1 X I _R , R _L = 100 Ω			50	ns

■ Marking

Marking	T3