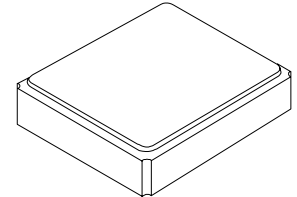





XTL1013

**26.00000 MHz
Crystal Unit**



SM3225-4 Case

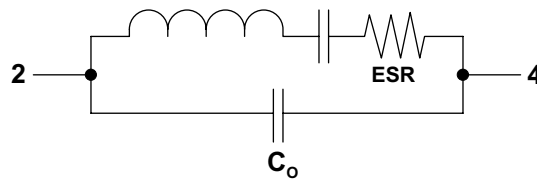
- **Surface Mount Seam-Weld Package**
- **Good Frequency Stability over Temperature**
- **Excellent Reliability**
- **Complies with Directive 2002/95/EC (RoHS)** 

The XTL1013 is a surface mount 3.2 x 2.5 mm crystal unit for use in wireless telecommunications devices, especially where an ultra-miniature package is needed for mobility.

Electrical Characteristics

Characteristic	Sym	Notes	Minimum	Typical	Maximum	Units
Nominal Frequency	F_O			26.00000		MHz
Mode of Oscillation			Fundamental			
Storage Temperature Range			-40		+85	°C
Operating Temperature Range			-20		+75	°C
Frequency Stability over Operating Temperature Range			±10 ppm (referred to the value at 25°C)			
Frequency Make Tolerance	F_L		±10 ppm @ 25°C ±3°C			
Equivalent Series Resistance	ESR				50	Ω
Nominal Drive Level				100		uW
Shunt Capacitance	C_O				3	pF
Load Capacitance	C_L			10.3		pF
Insulation Resistance			500 MΩ min @ 100 VDC			
Standard Shipping Quantity on 178 mm (7") Reel				3000		units
Lid Symbolization (in addition to Lot and/or Date Codes)			Line1: 1013 Line2: YWWS			

Crystal Equivalent Circuit



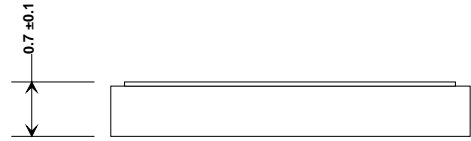
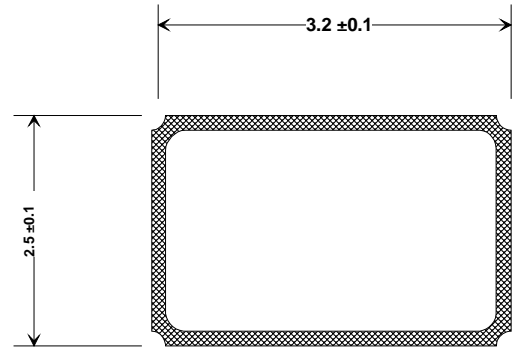
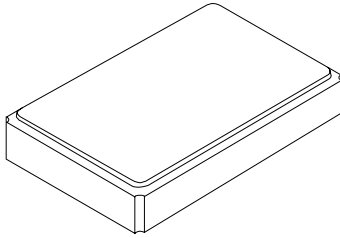
CAUTION: Electrostatic Sensitive Device. Observe precautions for handling.

Notes:

1. The design, manufacturing process, and specifications of this device are subject to change without notice.

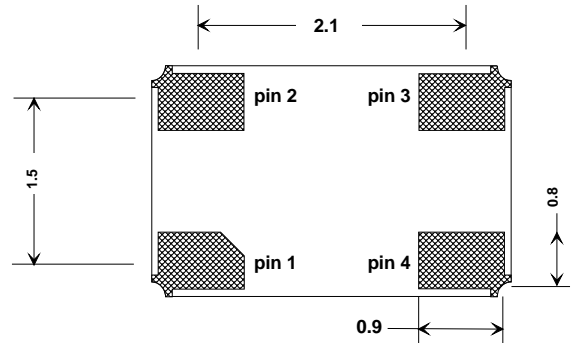
4-Terminal Surface-Mount Seam Weld Case

3.2 x 2.5 mm Nominal Footprint

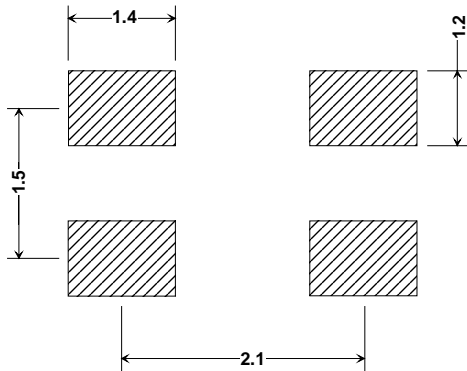


Electrical Connections

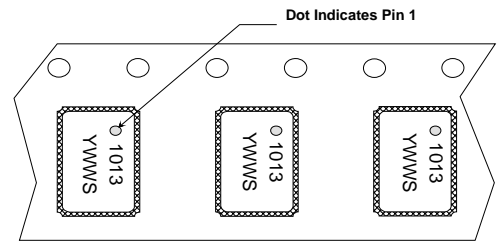
Pin	Connection
1	GND
2	IN/OUT
3	GND
4	IN/OUT



Package Dimensions (mm)

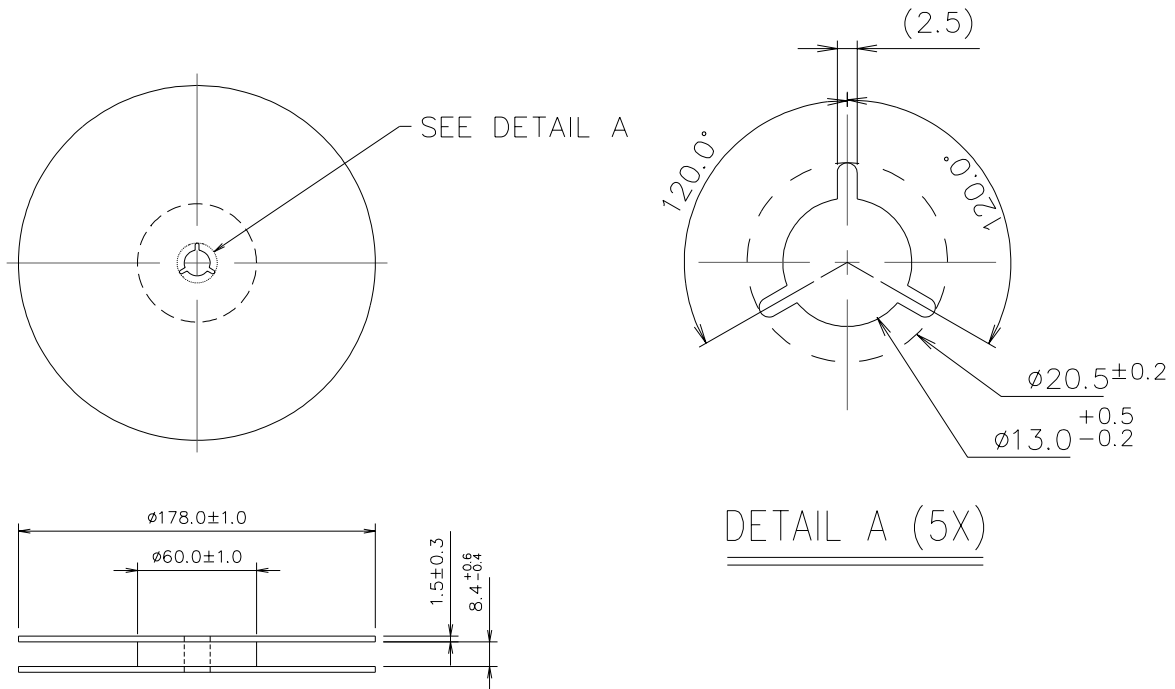


Footprint (mm)



Package Orientation in Carrier Tape

Reel Dimensions



Tape Dimensions

