

# Crystal filter

## QF21.4-20000/06



### Application

- 4 pol filter
- i.f.- filter
- use in mobile and stationary transceivers

Limiting values		Unit	Value
Nominal frequency	$f_0$	MHz	21.4
Centre frequency	$f_c$	MHz	$21.4 \pm 7.5$ kHz
Insertion loss		dB	< 8.0
Pass band at 3.0dB		kHz	$\pm > 100$
Ripple in pass band	$f_c \pm 80$ kHz	dB	< 1.5
Stop band attenuation	$f_c \pm 400$ kHz	dB	> 60 except spurious
Alternate attenuation	$f_0 \pm 2.5...5$ MHz	dB	> 90 except spurious
Spurious response		dB	> 55
Return loss	$f_0 \pm 80$ kHz	dB	> 9
IP3 (input)	$f_0 \pm 200; f_0 \pm 400$ kHz	Bm	> 30

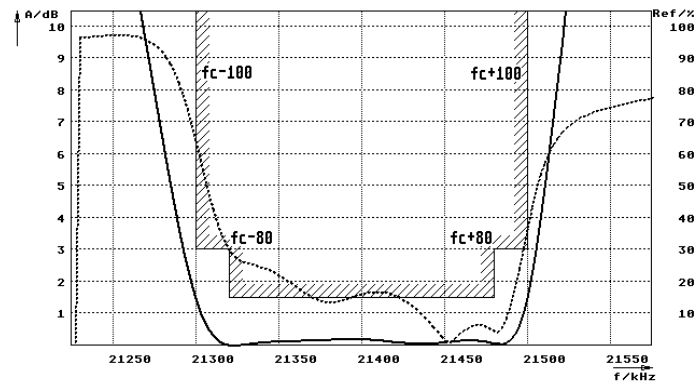
Terminating impedance Z

R1  C1	Ohm/pF	50    0
R2  C2	Ohm/pF	50    0

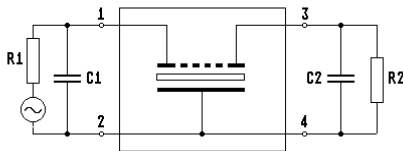
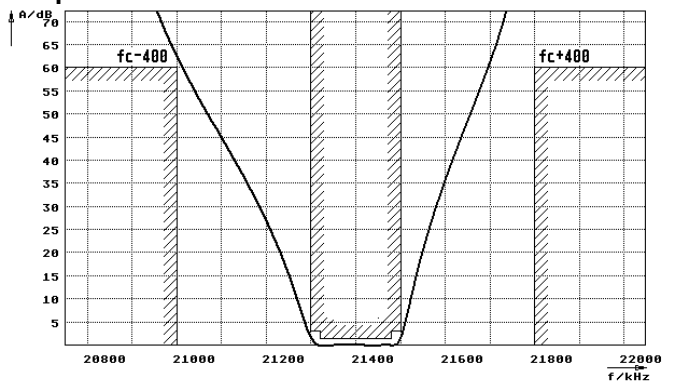
Operating temp. range °C -10... +70

### Characteristics QF21.4-20000/06

#### Pass band



#### Stop band



- Pin connections:
- 1 Input
  - 2 Ground-Input
  - 3 Output
  - 4 Ground-Output

