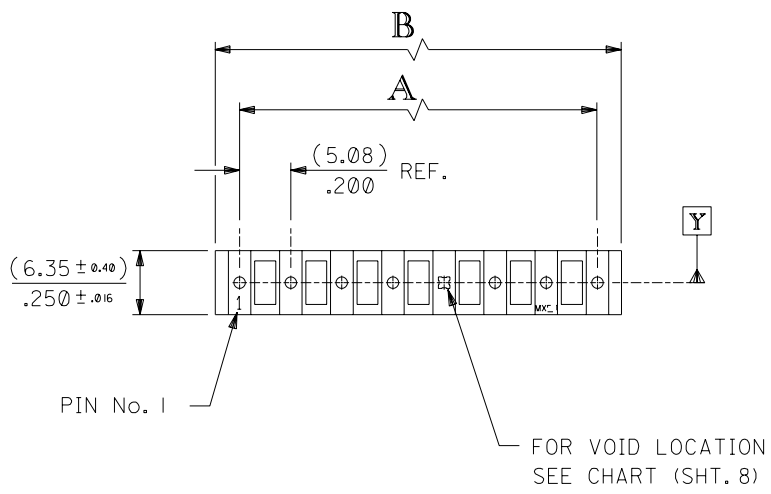
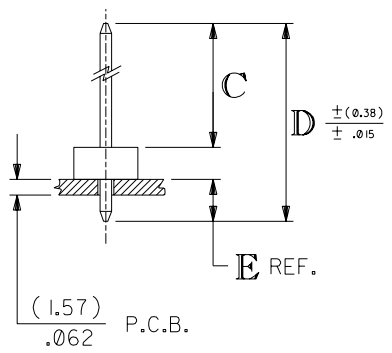
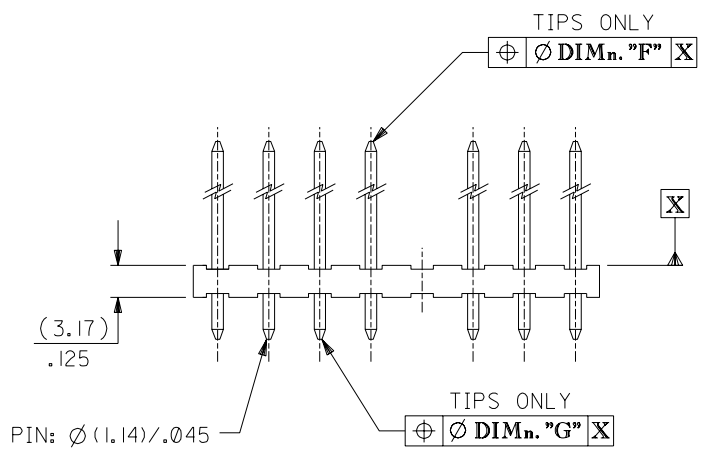
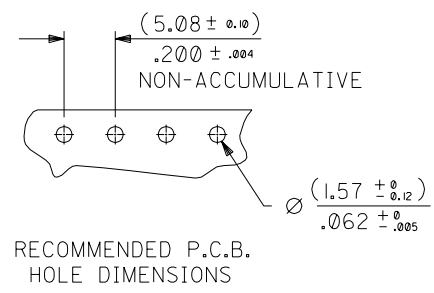


PART NO. SEE CHART
 DWG. NO. SDAE-3003-N*



3003-N * - *
 BASE No. VOID CODE
 No. OF CCTS. VERSION



No OF CCTS.	DIMn. A	DIMn. B
2	(5.08 ± 0.05) .200 ± .002	(9.91 ± 0.15) .390 ± .006
3	(10.16 ± 0.08) .400 ± .003	(14.99 ± 0.15) .590 ± .006
4	(15.24 ± 0.08) .600 ± .003	(20.07 ± 0.18) .790 ± .007
5	(20.32 ± 0.08) .800 ± .003	(25.15 ± 0.20) .990 ± .008
6	(25.40 ± 0.10) 1.000 ± .004	(30.23 ± 0.23) 1.190 ± .009
7	(30.48 ± 0.13) 1.200 ± .005	(35.31 ± 0.25) 1.390 ± .010
8	(35.56 ± 0.20) 1.400 ± .008	(40.39 ± 0.28) 1.590 ± .011
9	(40.64 ± 0.20) 1.600 ± .008	(45.47 ± 0.30) 1.790 ± .012
10	(45.72 ± 0.20) 1.800 ± .008	(50.55 ± 0.30) 1.990 ± .012
11	(50.80 ± 0.20) 2.000 ± .008	(55.63 ± 0.33) 2.190 ± .013
12	(55.88 ± 0.25) 2.200 ± .010	(60.71 ± 0.33) 2.390 ± .013
13	(60.96 ± 0.25) 2.400 ± .010	(65.79 ± 0.36) 2.590 ± .014
14	(66.04 ± 0.25) 2.600 ± .010	(70.87 ± 0.36) 2.790 ± .014
15	(71.12 ± 0.35) 2.800 ± .014	(75.95 ± 0.42) 2.990 ± .017
16	(76.20 ± 0.35) 3.000 ± .014	(81.03 ± 0.42) 3.190 ± .017
17	(81.28 ± 0.40) 3.200 ± .016	(86.11 ± 0.51) 3.390 ± .020
18	(86.36 ± 0.40) 3.400 ± .016	(91.19 ± 0.53) 3.590 ± .021
19	(91.44 ± 0.50) 3.600 ± .020	(96.27 ± 0.53) 3.790 ± .021
20	(96.52 ± 0.50) 3.800 ± .020	(101.35 ± 0.53) 3.990 ± .021

NOTES:

1. MATERIAL: WAFER, NYLON, 94V-2, COLOUR - NATURAL PINS, BRASS (FOR PLATING SEE CHARTS)
2. FOR DIMns. "A","B","C","D","E","F" AND VERSIONS, SEE CHARTS ON SHEET 2 & SUBSEQUENT SHEETS.
3. FOR VERSIONS WITH VOIDS SEE SHEET 8.
4. PIN PUSH OUT FORCE: (1.36Kg)/3lbs MIN.
5. PIN MUST MEET MOLEX SOLDERABILITY SPEC. ES-152.
6. MAX BOW (Ø.38)/Ø.15 OVER (25.4)/1.00

MODIFIED TOLS
 EC NO. 2003-0542
 DRAWN: DBYRNES 02/11/22
 CHK: / / / /
 APPR: / / / /
 REV BL

QUALITY SYMBOLS
 MAJOR =
 CRITICAL =

GENERAL TOLERANCES:
 (UNLESS SPECIFIED)

	mm	INCH
4 PLACES	±0.-----	±.-----
3 PLACES	±0.-----	±.010
2 PLACES	±0.25	±.014
1 PLACE	±0.35	±.-----

 ANGULAR: ± 1/2°
 DRAFT WHERE APPLICABLE MUST REMAIN WITHIN DIMENSIONS

SCALE 2 : 1
 DESIGN UNITS mm INCH
 THIRD ANGLE PROJECTION
 DRAWN BY & DATE DBYRNES 02/11/22
 CHECKED BY & DATE BMAGUIRE 02/11/22
 APPROVED BY & DATE MWILHITE 02/11/22
 CAD FILENAME

DIMENSIONS: mm INCH mm ONLY INCH ONLY
 SHT 1 OF 8
 REVISE ON CAD ONLY
 TITLE: 5.08 mm KK Hdr Vt RPin
 MOLEX MOLEX INCORPORATED
 MATERIAL NO. SEE CHART
 DRAWING NO. SDAE-3003-N*
 SHEET NO. 1 OF 8
 THIS DRAWING CONTAINS INFORMATION THAT IS PROPRIETARY TO MOLEX INCORPORATED AND SHOULD NOT BE USED WITHOUT WRITTEN PERMISSION.

INDEX: FOR FULL DIMENSIONS SEE RELEVANT SHEET.

ENG. No.	PLATING	DIM. C	DIM. D	SHT. No.
AE-3003-NA	(102)			3
AE-3003-NAG	(501)	(11.94) / .470	(19.05) / .750	6
AE-3003-NA(503)	(503)			6
AE-3003-NB	(102)	(16.69) / .657	(23.80) / .937	3
AE-3003-NC	(102)			3
AE-3003-NCG	(501)	(23.04) / .907	(30.48) / 1.200	6
AE-3003-ND	(102)			3
AE-3003-NDG	(501)	(27.81) / 1.095	(34.92) / 1.375	6
AE-3003-NF	(102)			3
AE-3003-NFG	(501)	(32.56) / 1.282	(39.68) / 1.562	6
AE-3003-NI	(102)	(13.51) / .532	(20.32) / .800	4
AE-3003-NJ	(102)	(21.46) / .845	(28.58) / 1.125	4
AE-3003-NK	(102)			4
AE-3003-NS	(501)	(18.29) / .720	(25.40) / 1.000	7
AE-3003-NM	(102)	(11.89) / .468	(23.80) / .937	4
AE-3003-NU	(102)	(11.18) / .440	(17.45) / .687	4
AE-3003-NV	(102)	(11.94) / .470	(18.29) / .720	5
AE-3003-NY	(102)	(10.90) / .430	(17.45) / .687	5

FOR VOID VERSIONS SEE SHEET 8.

FOR PREVIOUS DRAWING ISSUES SEE MRI.

BM SEE SHEET 1.

REVISIONS

THIRD ANGLE PROJECTION

DIMENSIONS SHOWN (METRIC) INCH
UNLESS OTHERWISE SPECIFIED TOLERANCES: ANGULAR ±2'

	INCH	(METRIC)
3 PLACE ±	.	
2 PLACE ±	.	±
1 PLACE ±		±

DRAFT WHERE APPLICABLE MUST REMAIN WITHIN DIMENSIONS

DESIGN DIMENSION (PRIMARY) (MM) IN.

EQUIVALENT DIMENSION (SECONDARY) (MM) IN.

REVISE ONLY ON CAD SYSTEM

CADCAM FILENAME SA3003X2 DGN

THIS DRAWING CONTAINS INFORMATION THAT IS PROPRIETARY TO MOLEX INC. & SHOULD NOT BE USED WITHOUT WRITTEN PERMISSION

TITLE: 5.08 mm KK Hdr Vt RPin

DRWG BY: GCH

CHK'D BY:

APP'D BY:

SCALE:

SHEET NO. DATE: 20F 29/8 /86

PART NO. SEE CHART

DWG NO. SDAE-3003-N*

SIZE B

10 9 8 7 6 5 4 3 2 1

PART NO. SEE CHART
DWG. NO. SDAE-3003-N*

ENG. NO.	AE-3003-NI		AE-3003-NJ		AE-3003-NK		AE-3003-NM		AE-3003-NU		
DIMN. "C"	(13.51 ±0.51) .532 ±.020		(21.46 ±0.51) .845 ±.020		(18.29 ±0.51) .720 ±.020		(11.89 ±0.51) .468 ±.020		(11.18 ±0.51) .440 ±.020		
DIMN. "D"	(20.32) / .800		(28.58) / 1.125		(25.40) / 1.000		(23.80) / .937		(17.45) / .687		
DIMN. "E"	(3.63) / .143		(3.94) / .155		(3.94) / .155		(8.74) / .344		(3.10) / .122		
DIMN. "F"	(1.02) / .040		(1.02) / .040		(1.02) / .040		(1.02) / .040		(1.02) / .040		
DIMN. "G"	(1.02) / .040		(1.02) / .040		(1.02) / .040		(1.02) / .040		(1.02) / .040		
PLATING	(102) TIN (5.0µM) / .000200 MIN. OVER COPPER (2.5µM) / .000100 MIN.		(102) TIN (5.0µM) / .000200 MIN. OVER COPPER (2.5µM) / .000100 MIN.		(102) TIN (5.0µM) / .000200 MIN. OVER COPPER (2.5µM) / .000100 MIN.		(102) TIN (5.0µM) / .000200 MIN. OVER COPPER (2.5µM) / .000100 MIN.		(102) TIN (5.0µM) / .000200 MIN. OVER COPPER (2.5µM) / .000100 MIN.		
	PART NO.	ENG NO.	PART NO.	ENG NO.	PART NO.	ENG NO.	PART NO.	ENG NO.	PART NO.	ENG NO.	
NO. OF CIRCUITS	2	10-08-1029	AE-3003-2I	10-08-2021	AE-3003-2J	10-08-2022	AE-3003-2K	NOT TOOLED	AE-3003-2M	38-00-0962	AE-3003-2U
	3	▲ -1039	▲ -3I	▲ -203I	▲ -3J	▲ -2032	▲ -3K	▲	▲ -3M	▲ -0963	▲ -3U
	4	▲ -1049	▲ -4I	▲ -204I	▲ -4J	▲ -2042	▲ -4K	▲	▲ -4M	▲ -0964	▲ -4U
	5	▲ -1059	▲ -5I	▲ -205I	▲ -5J	▲ -2052	▲ -5K	▲	▲ -5M	▲ -0965	▲ -5U
	6	▲ -1069	▲ -6I	▲ -206I	▲ -6J	▲ -2062	▲ -6K	▲	▲ -6M	▲ -0966	▲ -6U
	7	▲ -1079	▲ -7I	▲ -207I	▲ -7J	▲ -2072	▲ -7K	▼	▲ -7M	▲ -0967	▲ -7U
	8	▲ -1089	▲ -8I	▲ -208I	▲ -8J	▲ -2082	▲ -8K	NOT TOOLED	▲ -8M	▲ -0968	▲ -8U
	9	▲ -1099	▲ -9I	▲ -209I	▲ -9J	▲ -2092	▲ -9K	10-08-2094	▲ -9M	▲ -0969	▲ -9U
	10	▲ -1109	▲ -10I	▲ -210I	▲ -10J	▲ -2102	▲ -10K	▲ -2104	▲ -10M	▲ -0970	▲ -10U
	11	▲ -1119	▲ -11I	▲ -211I	▲ -11J	▲ -2112	▲ -11K	▲ -2114	▲ -11M	▲ -0971	▲ -11U
	12	▲ -1129	▲ -12I	▲ -212I	▲ -12J	▲ -2122	▲ -12K	▲ -2124	▲ -12M	▲ -0972	▲ -12U
	13	▲ -1139	▲ -13I	▲ -213I	▲ -13J	▲ -2132	▲ -13K	▲ -2134	▲ -13M	▲ -0973	▲ -13U
	14	▲ -1149	▲ -14I	▲ -214I	▲ -14J	▲ -2142	▲ -14K	▲ -2144	▲ -14M	▲ -0974	▲ -14U
	15	▲ -1159	▲ -15I	▲ -215I	▲ -15J	▲ -2152	▲ -15K	▲ -2154	▲ -15M	▲ -0975	▲ -15U
	16	▲ -1169	▲ -16I	▲ -216I	▲ -16J	▲ -2162	▲ -16K	▲ -2164	▲ -16M	▲ -0976	▲ -16U
	17	▲ -1179	▲ -17I	▲ -217I	▲ -17J	▲ -2172	▲ -17K	▲ -2174	▲ -17M	▲ -0977	▲ -17U
	18	▲ -1189	▲ -18I	▲ -218I	▲ -18J	▲ -2182	▲ -18K	▲ -2184	▲ -18M	▲ -0978	▲ -18U
	19	▼ -1199	▼ -19I	▼ -219I	▼ -19J	▼ -2192	▼ -19K	▼ -2194	▼ -19M	▼ -0979	▼ -19U
	20	10-08-1209	AE-3003-20I	10-08-220I	AE-3003-20J	10-08-2202	AE-3003-20K	10-08-2204	AE-3003-20M	38-00-0980	AE-3003-20U

FOR PREVIOUS DRAWING ISSUES SEE MRI.

BK SEE SHEET I.

LTR REVISIONS

THIRD ANGLE PROJECTION

DIMENSIONS SHOWN (METRIC) INCH
UNLESS OTHERWISE SPECIFIED TOLERANCES: ANGULAR ±2"

3 PLACE ± .	
2 PLACE ± .	±
1 PLACE ± .	±

DRAFT WHERE APPLICABLE MUST REMAIN WITHIN DIMENSIONS

DESIGN DIMENSION (MM) (PRIMARY) IN.
EQUIVALENT DIMENSION (MM) (SECONDARY) IN.

DRWG BY: GCH
CHK'D BY:
APP'D BY:
SCALE:

REVISE ONLY ON CAD SYSTEM SH. REV.

CAD/CAM FILENAME: SA3003X4 DGN
THIS DRAWING CONTAINS INFORMATION THAT IS PROPRIETARY TO MOLEX INC. & SHOULD NOT BE USED WITHOUT WRITTEN PERMISSION

TITLE: 5.08 mm KK Hdr Vt RPin

MOLEX EUROPE
SHEET NO. 40F DATE 29/8 /86

PART NO. SEE CHART DWG NO. SDAE-3003-N* SIZE B

7132-1283 10 9 8 7 6 5 4 3 2 1