

BAS16WS

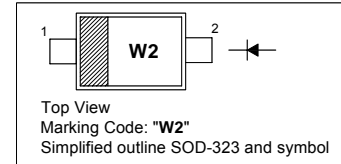
SILICON EPITAXIAL PLANAR SWITCHING DIODE

Features

- Fast switching diode

PINNING

PIN	DESCRIPTION
1	Cathode
2	Anode

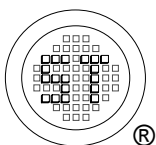


Absolute Maximum Ratings ($T_a = 25\text{ }^\circ\text{C}$)

Parameter	Symbol	Value	Unit	
Reverse Voltage	V_R	75	V	
Peak Reverse Voltage	V_{RM}	100	V	
Forward Current (Continuous)	I_F	250	mA	
Non-Repetitive Peak Forward Current	I_{FSM}	$t = 1\text{ }\mu\text{s}$	2	A
		$t = 1\text{ ms}$	1	A
		$t = 1\text{ s}$	0.5	A
Power Dissipation	P_{tot}	200	mW	
Junction Temperature	T_j	150	$^\circ\text{C}$	
Storage Temperature Range	T_{stg}	- 65 to + 150	$^\circ\text{C}$	

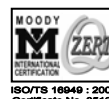
Characteristics at $T_a = 25\text{ }^\circ\text{C}$

Parameter	Symbol	Max.	Unit
Forward Voltage at $I_F = 1\text{ mA}$ at $I_F = 10\text{ mA}$ at $I_F = 50\text{ mA}$ at $I_F = 150\text{ mA}$	V_F	0.715	V
		0.855	
		1	
		1.25	
Reverse Leakage Current at $V_R = 75\text{ V}$ at $V_R = 25\text{ V}, T_J = 150\text{ }^\circ\text{C}$ at $V_R = 75\text{ V}, T_J = 150\text{ }^\circ\text{C}$	I_R	1	μA
		30	
		50	
Diode Capacitance at $V_R = 0\text{ V}, f = 1\text{ MHz}$	C_{tot}	2	pF
Reverse Recovery Time at $I_F = 10\text{ mA}$ to $I_R = 10\text{ mA}, I_R = 1\text{ mA}, R_L = 100\text{ }\Omega$	t_{rr}	6	ns



SEMTECH ELECTRONICS LTD.

(Subsidiary of Sino-Tech International Holdings Limited, a company listed on the Hong Kong Stock Exchange, Stock Code: 724)



Dated : 07/04/2009

BAS16WS

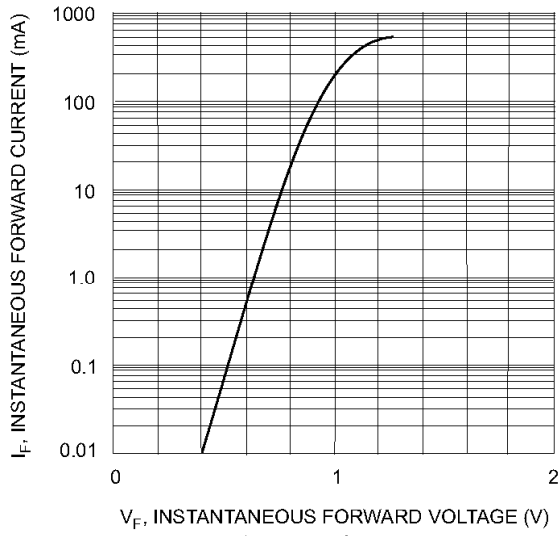


Fig. 1 Forward Characteristics

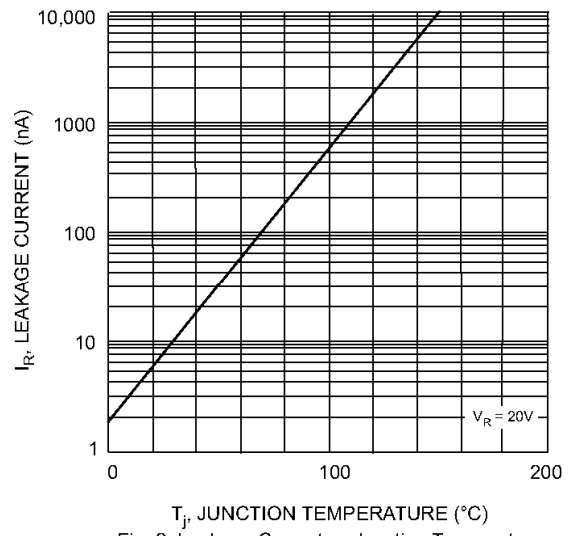
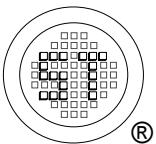
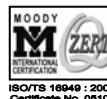


Fig. 2 Leakage Current vs Junction Temperature



SEMTECH ELECTRONICS LTD.
 (Subsidiary of Sino-Tech International Holdings Limited, a company listed on the Hong Kong Stock Exchange, Stock Code: 724)



ISO/TS 16949:2002
 Certificate No. 05103

ISO 14001:2004
 Certificate No. 7116

ISO 9001:2000
 Certificate No. 050059

BS-OHSAS 18001:2007
 Certificate No. 7116

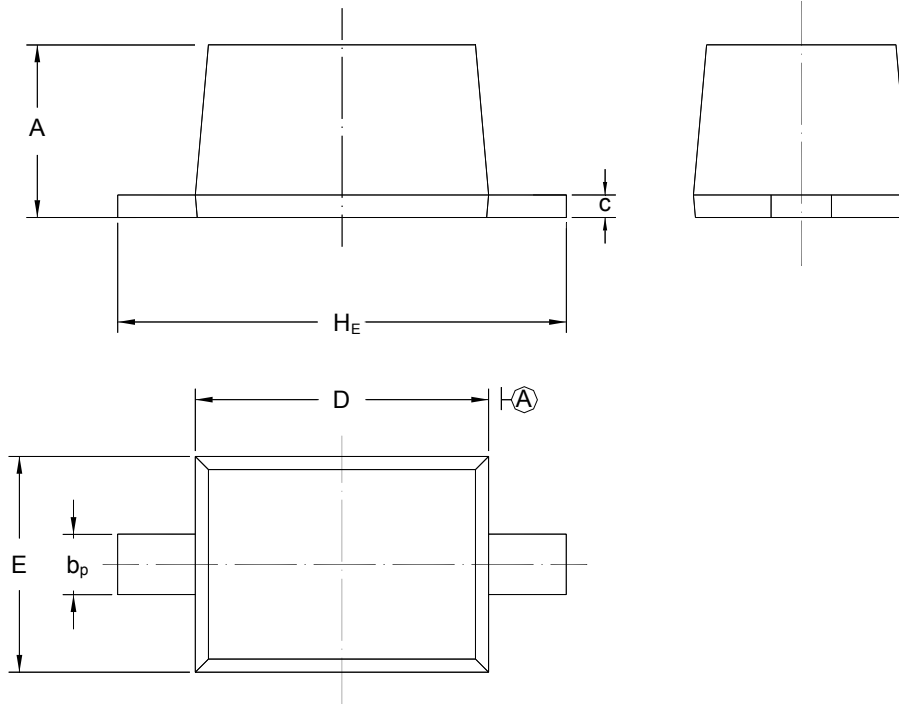
IECQ QC 080000
 Certificate No. 05103

BAS16WS

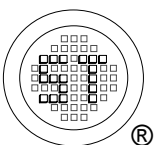
PACKAGE OUTLINE

Plastic surface mounted package; 2 leads

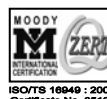
SOD-323



UNIT	A	b _p	C	D	E	H _E
mm	1.10 0.80	0.40 0.25	0.15 0.00	1.80 1.60	1.35 1.15	2.80 2.30



SEMTECH ELECTRONICS LTD.
 (Subsidiary of Sino-Tech International Holdings Limited, a company listed on the Hong Kong Stock Exchange, Stock Code: 724)



Dated : 07/04/2009