



Silicon Double Balanced HMIC™ Mixer, 700 - 1000 MHz

V 1.00

MA4EX900L-1226

Features

- Low Cost Miniature Plastic Package
- 6.5 dB Typical Conversion Loss at 850 MHz
- +3 to +7 dBm LO Drive
- HMIC™ Process
- Silicon Low Barrier Schottky Diodes
- DC - 400 MHz IF Bandwidth

Description

M/A-COM's MA4EX900L-1226 is a silicon monolithic double balanced low barrier mixer in a low cost surface mount 8 lead plastic MSOP package. The die uses M/A-COM's unique HMIC™ silicon/glass process to achieve low loss passive elements while retaining the advantages of low barrier silicon Schottky diodes.

Applications

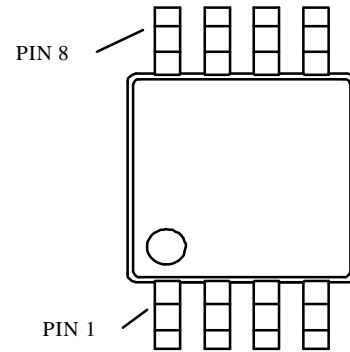
These mixers are well suited for high volume wireless and cellular applications where small size and repeatability are required. Typical applications include frequency conversion, modulation, and demodulation for receivers and transmitters in both portable cellular and base station applications.

Absolute Maximum Ratings¹

Parameter	Maximum Ratings
Operating Temperature	-40 °C to +85 °C
Storage Temperature	-65 °C to +150 °C
Incident LO Power	+20 dBm
Incident RF Power	+20 dBm

1. Exceeding these limits may cause permanent damage.

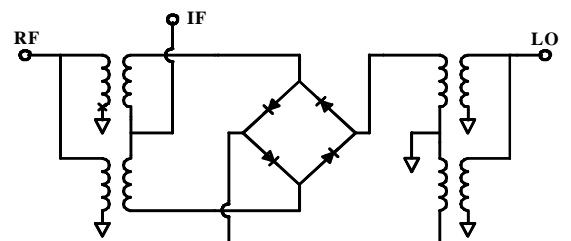
MSOP-8 Package Outline



PIN Configuration

PIN	Function	PIN	Function
1	GND	5	LO
2	IF	6	GND
3	GND	7	GND
4	GND	8	RF

Functional Schematic



Electrical Specifications: @ + 25 °C

Parameter	Frequency Range	Test Conditions	Units	Min.	Typ.	Max.
Conversion Loss	850 MHz 700-1000 MHz	LO Drive = +5 dBm RF = -10 dBm, IF = 60 MHz	dB dB		6.5 7.0	7.0 9.0
L - R Isolation	850 MHz 700-1000 MHz	LO Drive = +5 dBm RF Level = -10 dBm	dB dB		26.0 23.0	
L - I Isolation	850 MHz 700-1000 MHz	LO Drive = +5 dBm RF Level = -10 dBm	dB dB		31.0 30.0	
R - I Isolation	850 MHz 700-1000 MHz	LO Drive = +5 dBm RF Level = -10 dBm	dB dB		23.0 21.0	
LO VSWR	850 MHz 700-1000 MHz	LO Drive = +5 dBm RF Level = -10 dBm			1.60 1.60	
RF VSWR	850 MHz 700-1000 MHz	LO Drive = +5 dBm RF Level = -10 dBm			1.10 1.80	
IF VSWR	DC - 300 MHz	LO Drive = +5dBm RF Level = -10 dBm			1.90	
Input IP3	850 MHz 700-1000 MHz	LO Drive = +5 dBm IF = 60 MHz	dBm dBm	8.0 8.0	+9.50 +11.0	
Input 1 dB Compression	850 MHz 700-1000 MHz	LO Drive = +5 dBm IF = 60 MHz	dBm dBm		+1.0 +1.0	
IF 1 dB Bandwidth			MHz	0	400.0	

M/A-COM Inc. and its affiliates reserve the right to make changes to the product(s) or information contained herein without notice. M/A-COM makes no warranty, representation or guarantee regarding the suitability of its products for any particular purpose, nor does M/A-COM assume any liability whatsoever arising out of the use or application of any product(s) or information.

Visit www.macom.com for additional data sheets and product information.

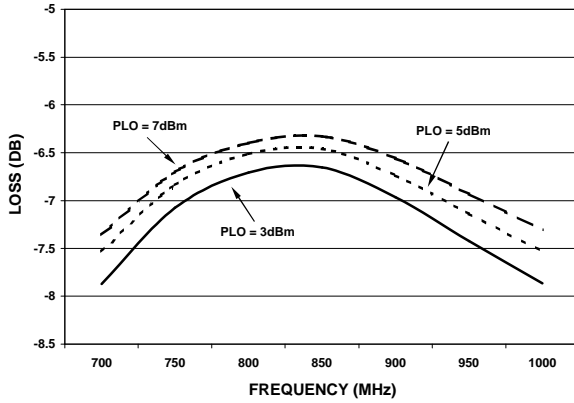
- North America: Tel. (800) 366-2266
- Asia/Pacific: Tel.+81-44-844-8296, Fax +81-44-844-8298
- Europe: Tel. +44 (1344) 869 595, Fax+44 (1344) 300 020

tyco / Electronics

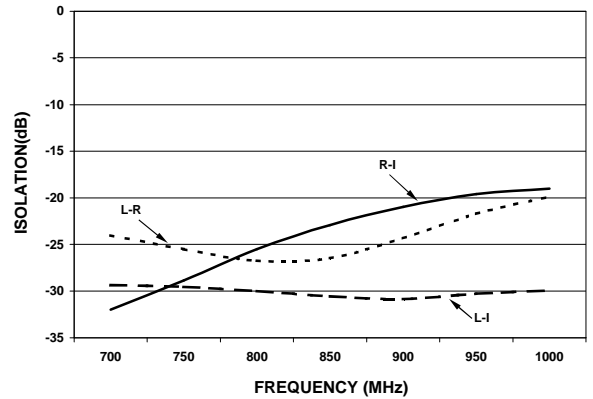
M/A-COM

Typical Performance Curves (LO Drive = +5 dBm, RF = -10 dBm, IF = 60 MHz)

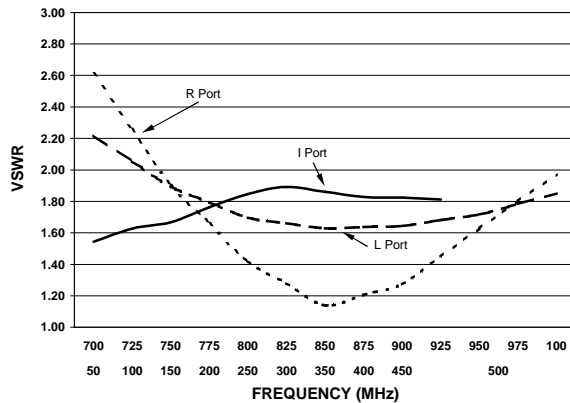
Conversion Loss



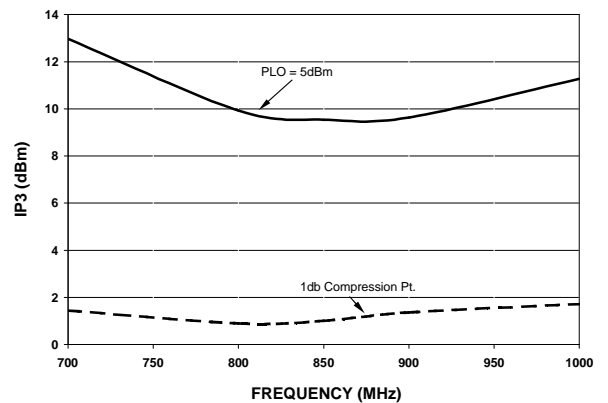
Isolation



VSWR



Input IP3 & 1 dB Compression Point

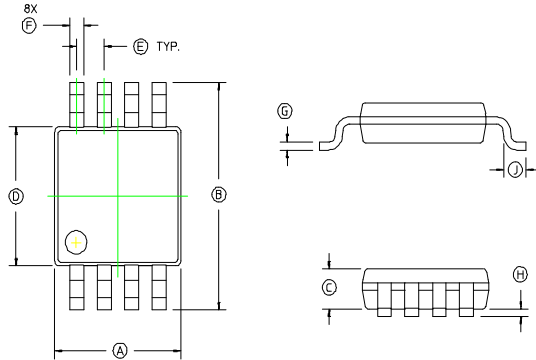


M/A-COM Inc. and its affiliates reserve the right to make changes to the product(s) or information contained herein without notice. M/A-COM makes no warranty, representation or guarantee regarding the suitability of its products for any particular purpose, nor does M/A-COM assume any liability whatsoever arising out of the use or application of any product(s) or information.

Visit www.macom.com for additional data sheets and product information.

- North America: Tel. (800) 366-2266
- Asia/Pacific: Tel.+81-44-844-8296, Fax +81-44-844-8298
- Europe: Tel. +44 (1344) 869 595, Fax+44 (1344) 300 020

Case Style - MSOP-8 / ODS-1226



MSOP-8 / ODS-1226 Dimensions

Dim	Inches		Millimeters	
	Min.	Max.	Min.	Max.
A	.110	.126	2.80	3.20
B	.184	.202	4.67	5.13
C	—	.040	—	1.02
D	.118 REF.		3.00 REF.	
E	.020	.031	.50	.80
F	.008	.016	.20	.40
G	.003	—	.08	—
H	.000	.006	.00	.15
J	.022 REF.		.55 REF.	

Notes: 1. Leads Coplanarity should be 0.003 (0.08) max.

Ordering Information

Part Number	Package
MA4EX900L-1226	Tube
MA4EX900L-1226T	Tape and Reel

M/A-COM Inc. and its affiliates reserve the right to make changes to the product(s) or information contained herein without notice. M/A-COM makes no warranty, representation or guarantee regarding the suitability of its products for any particular purpose, nor does M/A-COM assume any liability whatsoever arising out of the use or application of any product(s) or information.

Visit www.macom.com for additional data sheets and product information.

- North America: Tel. (800) 366-2266
- Asia/Pacific: Tel.+81-44-844-8296, Fax +81-44-844-8298
- Europe: Tel. +44 (1344) 869 595, Fax+44 (1344) 300 020