



## STRAIGHT PLUGS SOLDER TYPE FOR SEMI RIGID CABLES

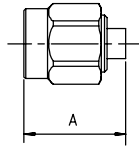
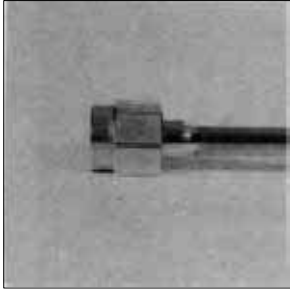


Fig. 1

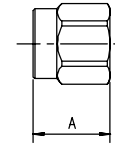


Fig. 2

| Cable group | Part number (gold) | Part number (gold/passivated nut) | Fig. | Dimensions A (mm) | Captive center contact | Assembly | Note  |
|-------------|--------------------|-----------------------------------|------|-------------------|------------------------|----------|---|
| .085"       | R125 052 000*      | R125 052 002                      | 1    | 11.2              | no                     | M10      | single piece body                                   |
| .085"       |                    | R125 052 102●                     | 1    | 11.2              | yes                    | M12      |   |
| .085"       | R125 052 500●      |                                   | 1    | 11.2              | no                     | M12      | retractable coupling nut/<br>single piece body      |
| .141"       | R125 054 000       | R125 054 002                      | 2    | 8.5               |                        | M09      | without center contact                              |
| .141"       | R125 054 500       | R125 054 502●                     | 2    | 7.5               |                        | M09      | without center contact/<br>retractable coupling nut |
| .141"       | R125 055 000*      | R125 055 002*                     | 1    | 11.2              | no                     | M10      | single piece body                                   |
| .141"       | R125 055 100●      | R125 055 102●                     | 1    | 11.2              | yes                    | M12      |   |
| .141"       | R125 055 500       |                                   | 1    | 11.2              | no                     | M10      | retractable coupling nut/<br>single piece body      |
| .141"       | R125 057 000       | R125 057 002                      | 1    | 11.2              |                        | M09      | without center contact                              |

## RIGHT ANGLE PLUGS CRIMP TYPE FOR FLEXIBLE CABLES

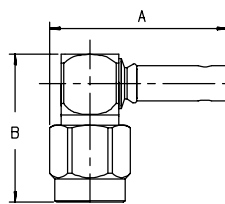


Fig. 1

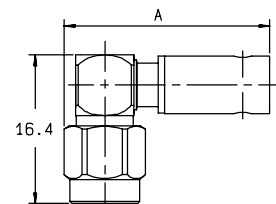


Fig. 2

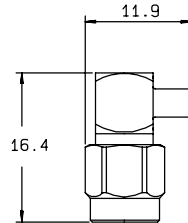
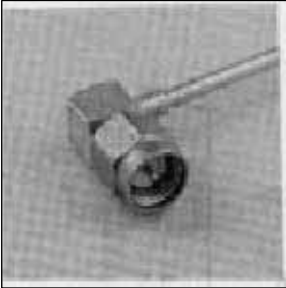
| Cable group  | Part number (gold) | Part number (passivated) | Fig. | Dimensions (mm) |       | Captive center contact | Assembly | Note              |
|--------------|--------------------|--------------------------|------|-----------------|-------|------------------------|----------|-------------------|
|              |                    |                          |      | A               | B     |                        |          |                   |
| 2 / 50 / S   | R125 170 402       |                          | 1    | 19.6            | 16.85 | yes                    | M11      |                   |
| 2.6 / 50 / S | R125 172 000       | R125 172 001*            | 1    | 19.6            | 16.4  | yes                    | M11      | single piece body |
| 2.6 / 50 / D | R125 174 000       |                          | 1    | 18.6            | 16.4  | yes                    | M11      |                   |
| 2.6 / 50 / D |                    | R125 174 011             | 1    | 18.6            | 16.85 | yes                    | M11      |                   |
| 5 / 50 / S   | R125 175 000       | R125 175 001             | 2    | 21.8            |       | yes                    | M11      | single piece body |
| 5 / 50 / D   | R125 176 000       | R125 176 001             | 2    | 21.8            |       | yes                    | M11      |                   |

● upon request

\* packaging: 100 pieces. For unit packaging, add "W" after the P/N

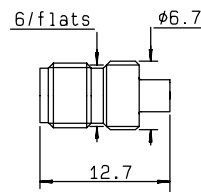
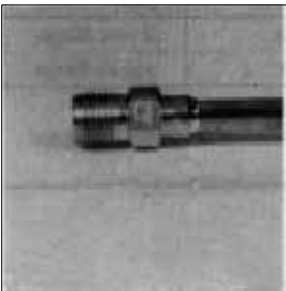


## RIGHT ANGLE PLUGS SOLDER TYPE FOR SEMI RIGID CABLES



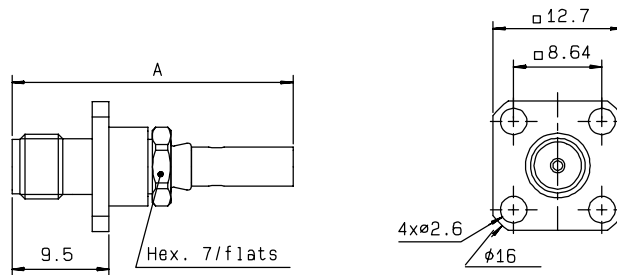
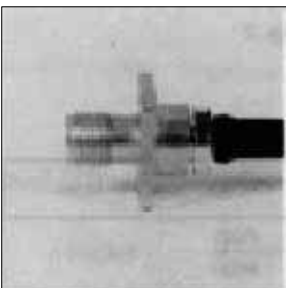
| Cable group | Part number (gold)   | Part number (gold/passivated nut) | Captive center contact | Assembly |
|-------------|----------------------|-----------------------------------|------------------------|----------|
| .085"       | <b>R125 153 000</b>  | <b>R125 153 002*</b>              | yes                    | M03      |
| .141"       | <b>R125 154 000*</b> | <b>R125 154 002*</b>              | yes                    | M03      |

## STRAIGHT JACKS SOLDER TYPE FOR SEMI-RIGID CABLES



| Cable group | Part number (gold)   | Captive center contact | Assembly |
|-------------|----------------------|------------------------|----------|
| .085"       | <b>R125 222 000*</b> | no                     | M10      |
| .141"       | <b>R125 225 000*</b> | no                     | M10      |
| .141"       | <b>R125 225 102●</b> | yes                    | M12      |

## STRAIGHT FLANGE JACKS CRIMP TYPE FOR FLEXIBLE CABLES



| Cable group  | Part number (gold)   | Part number (passivated) | Dimension A (mm) | Captive center contact | Assembly | Cut out |
|--------------|----------------------|--------------------------|------------------|------------------------|----------|---------|
| 2.6 / 50 / S | <b>R125 272 000*</b> | <b>R125 272 001</b>      | 27.5             | no                     | M06      | P11     |
| 5 / 50 / S   | <b>R125 277 000●</b> | <b>R125 277 001●</b>     | 29.6             | no                     | M06      | P11     |
| 5 / 50 / D   | <b>R125 278 000●</b> | <b>R125 278 001●</b>     | 29.6             | no                     | M06      | P11     |

● upon request

\* packaging: 100 pieces. For unit packaging, add "W" after the P/N