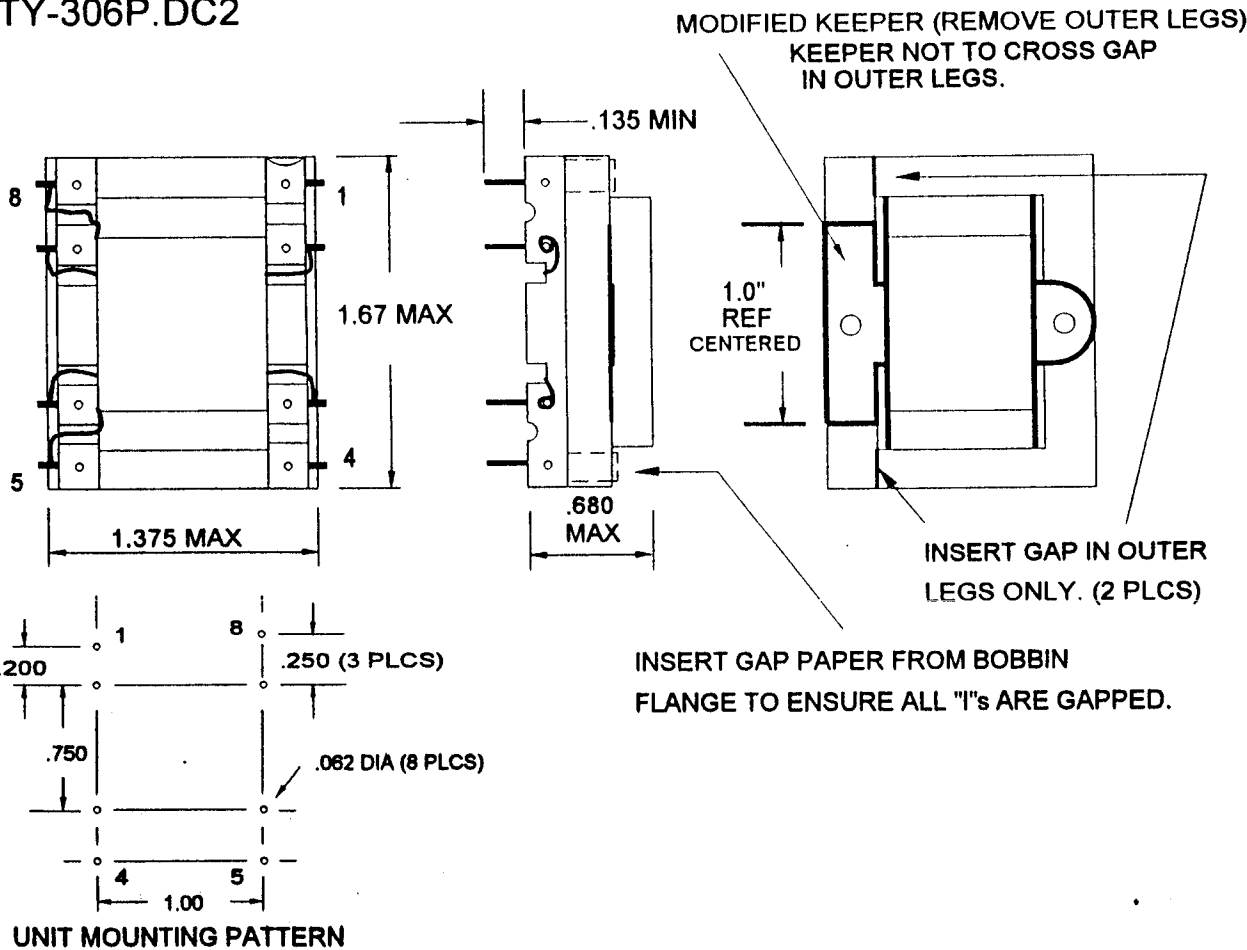


TY-306P.DC2



PRODUCTION TESTS

TURNS RATIO: 100%	
DC	5-6: 31
RESISTANCE IN OHMS NOM	7-8: 31
	2-3: 108
APPLY: 1V 300Hz .100 ADC 6-7 TIE 5 & 8	
INDUCTANCE: 510 mHY MIN(PARALLEL MODE)	

HIPOT: 1500V (EACH P)-S,C S-C

IMPREGNATION NOTES:

FINAL ASSEMBLY NOTES



METHOD
BUTT W/ .005" GAP (CHECK)

MARKING PART NO. , DATECODE, SITECODE

PART NO. TY-306P