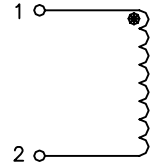


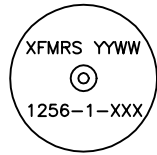
## XFRL-1256-1 SERIES INDUCTORS

1. OCL drop 5% Typ at Isat
2. Temp Rise of 40°C Typ at Irated
3. Inductance  $\pm 10\%$  measured at 1KHz, values below 10uH $\pm 20\%$
4. Leads for PC mounting tinned to within 1/16" of body
5. Custom values available upon request
6. Coils wrapped with sleeving UL-VW-1 rated
7. Center hole for mechanical mounting
8. 1000VAC Hypot (Wdg to Core through Sleeve)
9. DCR measured @20°C
10. Spacer available at additional cost to facilitate PC board washing
11. Operating Temp -40°C to +85°C

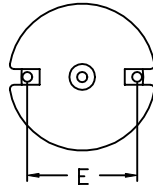
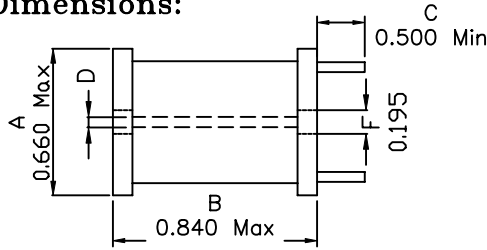
### Schematic:



### Mechanical Dimensions:



TOP VIEW



BOTTOM VIEW

D: Clearance  
Hole for 4/40 Screw

### TOLERANCES:

.xxx  $\pm$  0.010

Dimensions in INCH

Part Number	INDUCTANCE <sup>3</sup> (uH)	DCR <sup>9</sup> Ohms Max	Isat <sup>1</sup> (A)	Irated <sup>2</sup> (A)	Dimension E Typ
XFRL-1256-1-1.0	1.0	0.003	87.0	9.0	0.550
XFRL-1256-1-1.2	1.2	0.003	68.0	9.0	0.550
XFRL-1256-1-1.5	1.5	0.004	56.0	9.0	0.550
XFRL-1256-1-1.8	1.8	0.004	56.0	9.0	0.550
XFRL-1256-1-2.2	2.2	0.005	47.0	9.0	0.550
XFRL-1256-1-2.7	2.7	0.005	47.0	9.0	0.550
XFRL-1256-1-3.3	3.3	0.005	40.0	9.0	0.550
XFRL-1256-1-3.9	3.9	0.006	36.0	9.0	0.550
XFRL-1256-1-4.7	4.7	0.007	32.0	9.0	0.550
XFRL-1256-1-5.6	5.6	0.007	29.0	9.0	0.550
XFRL-1256-1-6.8	6.8	0.008	26.0	9.0	0.550
XFRL-1256-1-8.2	8.2	0.009	24.5	9.0	0.550
XFRL-1256-1-10	10.0	0.010	21.2	9.0	0.550
XFRL-1256-1-12	12.0	0.011	19.0	9.0	0.550
XFRL-1256-1-15	15.0	0.015	17.5	7.2	0.500
XFRL-1256-1-18	18.0	0.016	16.5	7.2	0.500
XFRL-1256-1-22	22.0	0.025	15.8	5.5	0.500
XFRL-1256-1-27	27.0	0.030	14.4	4.5	0.500
XFRL-1256-1-33	33.0	0.040	13.2	4.0	0.406
XFRL-1256-1-39	39.0	0.046	11.8	4.0	0.469
XFRL-1256-1-47	47.0	0.062	11.0	2.8	0.469
XFRL-1256-1-56	56.0	0.069	10.0	2.8	0.485
XFRL-1256-1-68	68.0	0.077	8.9	2.8	0.500
XFRL-1256-1-82	82.0	0.083	8.2	2.8	0.500
XFRL-1256-1-100	100.0	0.095	7.5	2.8	0.500
XFRL-1256-1-120	120.0	0.127	5.8	2.0	0.480
XFRL-1256-1-150	150.0	0.181	5.6	1.6	0.480
XFRL-1256-1-180	180.0	0.217	5.1	1.6	0.480
XFRL-1256-1-220	220.0	0.240	4.3	1.6	0.480
XFRL-1256-1-270	270.0	0.300	4.1	1.6	0.480
XFRL-1256-1-330	330.0	0.336	3.8	1.3	0.480
XFRL-1256-1-390	390.0	0.460	3.3	1.0	0.480
XFRL-1256-1-470	470.0	0.636	3.2	0.8	0.450
XFRL-1256-1-560	560.0	0.696	2.9	0.8	0.450