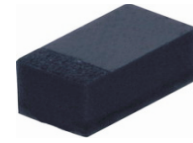


## CPDERT5V0U-HF

RoHS Device  
Halogen Free

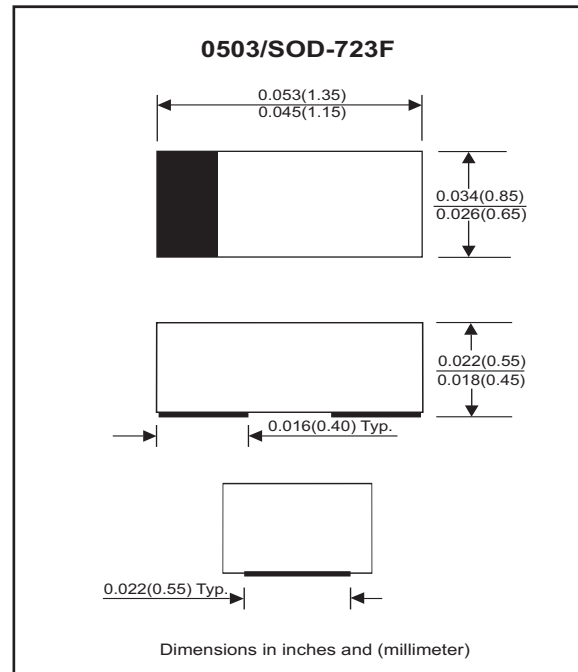


### Features

- Uni-directional ESD protection
- Working voltage:5V
- Ultra small SMD package:0503.
- High component density.

### Mechanical data

- Case: 0503/SOD-723F Standard package , molded plastic.
- Terminals: Gold plated, solderable per MIL-STD-750, method 2026.
- Marking Code: Cathode band & E05
- Mounting position: Any.
- Weight: 0.0011 gram (approx.).



### Maximum Rating AND Electrical Characteristics (at TA=25 °C unless otherwise noted)

| Parameter               | Conditions  | Symbol           | Min | Typ | Max         | Unit |
|-------------------------|---|------------------|-----|-----|-------------|------|
| Forward voltage         | I <sub>F</sub> = 10mA   | V <sub>F</sub>   |     | 0.8 |             | V    |
| Diode breakdown voltage | I <sub>R</sub> = 1mA  | V <sub>BD</sub>  | 6   |     |             | V    |
| Leakage current         | V <sub>R</sub> = 5V   | I <sub>L</sub>   |     | 0.3 | 2.0         | uA   |
| Junction capacitance    | V <sub>R</sub> = 0V, f = 1MHz   | C <sub>T</sub>   |     | 90  | 120         | pF   |
| ESD capability          | IEC 61000-4-2(air)<br>IEC 61000-4-2(contact)  | ESD              |     |     | 20<br>15    | kV   |
| Clamping voltage        | I <sub>PP</sub> = 5A, T <sub>P</sub> =8/20us<br>I <sub>PP</sub> = 16A, T <sub>P</sub> =8/20us | V <sub>C</sub>   |     |     | 9.8<br>12.5 | V    |
| Peak pulse power        |   | P <sub>PP</sub>  |     |     | 200         | W    |
| Operation temperature   |   | T <sub>J</sub>   |     |     | 125         | °C   |
| Storage temperature     |   | T <sub>STG</sub> | -55 |     | 150         | °C   |

## RATING AND CHARACTERISTIC CURVES (CPDERT5V0U-HF)

Fig. 1 - 8/20us Peak pulse current wave form acc. IEC 61000-4-5

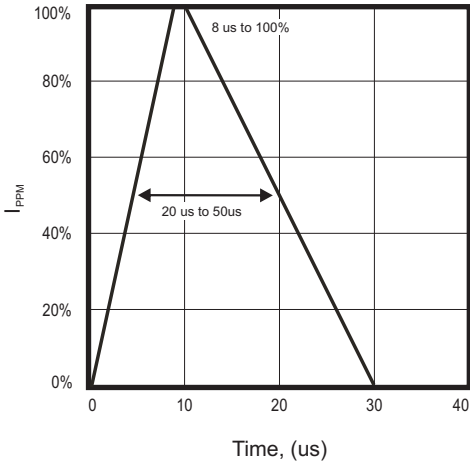


Fig. 2 - Power rating derating curve

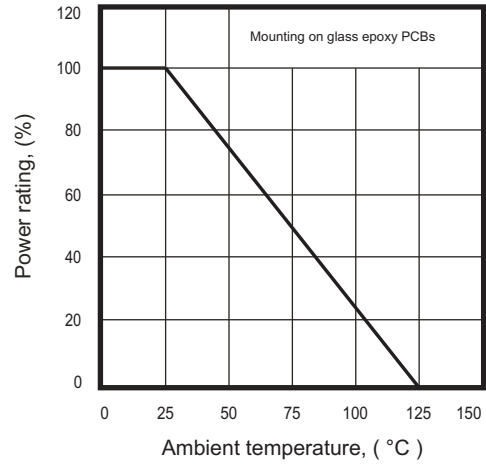


Fig. 3 - Clamping voltage vs. peak pulse current

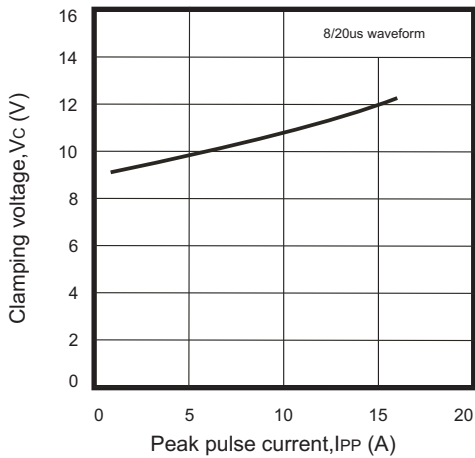


Fig. 4 - Forward voltage vs. forward current

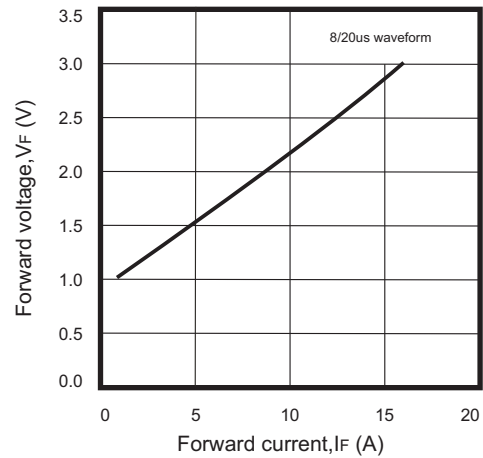
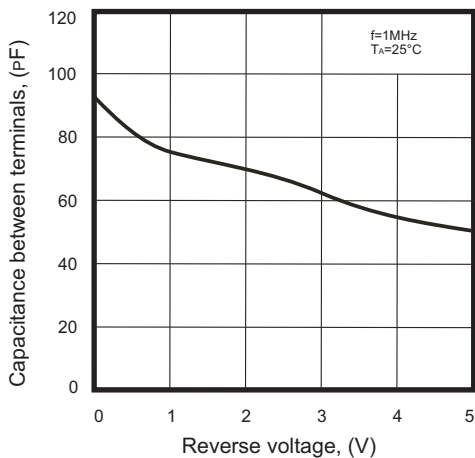
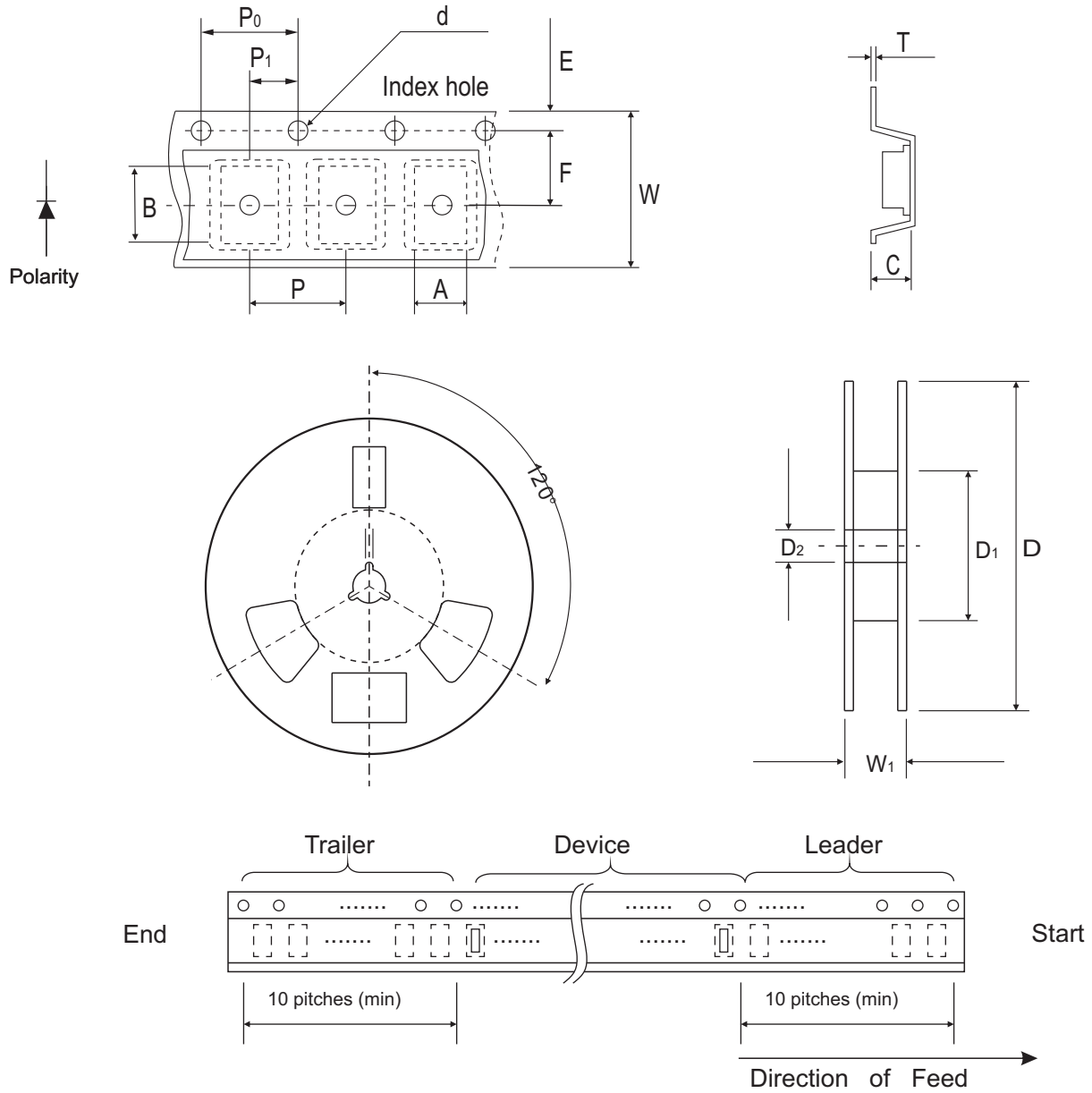


Fig. 5 - Capacitance between terminals characteristics



## Reel Taping Specification



| 0503<br>(SOD-723F) | SYMBOL | A             | B             | C             | d             | D            | D <sub>1</sub> | D <sub>2</sub> |
|--------------------|--------|---------------|---------------|---------------|---------------|--------------|----------------|----------------|
|                    | (mm)   | 0.90 ± 0.10   | 1.46 ± 0.10   | 0.60 ± 0.10   | 1.55 ± 0.10   | 178 ± 1      | 60.0 MIN.      | 13.0 ± 0.20    |
|                    | (inch) | 0.035 ± 0.004 | 0.057 ± 0.004 | 0.024 ± 0.004 | 0.061 ± 0.004 | 7.008 ± 0.04 | 2.362 MIN.     | 0.512 ± 0.008  |

| 0503<br>(SOD-723F) | SYMBOL | E             | F             | P             | P <sub>0</sub> | P <sub>1</sub> | T             | W             | W <sub>1</sub> |
|--------------------|--------|---------------|---------------|---------------|----------------|----------------|---------------|---------------|----------------|
|                    | (mm)   | 1.75 ± 0.10   | 3.50 ± 0.05   | 4.00 ± 0.10   | 4.00 ± 0.10    | 2.00 ± 0.10    | 0.22 ± 0.05   | 8.00 ± 0.20   | 13.5 MAX.      |
|                    | (inch) | 0.069 ± 0.004 | 0.138 ± 0.002 | 0.157 ± 0.004 | 0.157 ± 0.004  | 0.079 ± 0.004  | 0.009 ± 0.002 | 0.315 ± 0.008 | 0.531 MAX.     |

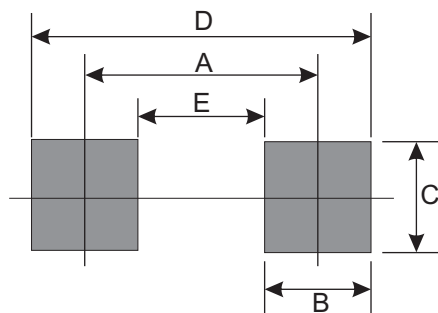
## Marking Code

| Part Number   | Marking Code |
|---------------|--------------|
| CPDERT5V0U-HF | E05          |



## Suggested PAD Layout

| SIZE | 0503/SOD-723F |        |
|------|---------------|--------|
|      | (mm)          | (inch) |
| A    | 0.85          | 0.033  |
| B    | 0.55          | 0.022  |
| C    | 0.85          | 0.033  |
| D    | 1.40          | 0.055  |
| E    | 0.30          | 0.012  |



## Standard Packaging

| Case Type     | Qty Per Reel | Reel Size |
|---------------|--------------|-----------|
|               | (Pcs)        | (inch)    |
| 0503/SOD-723F | 4,000        | 7         |