

# Getting Wired Is Easy

## Wide Variety Of Euro-Mag<sup>®</sup> European Style PCB Terminal Blocks And Plugs Makes Your Application A Snap!

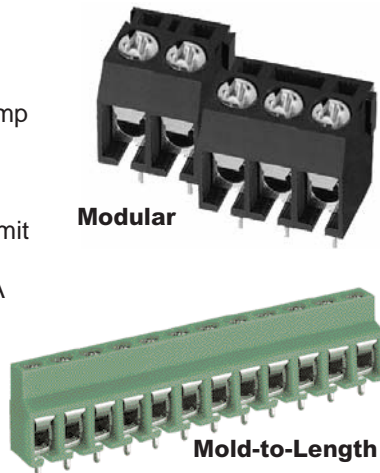
- **High Current Terminal Blocks** allow handling lots of power right on the circuit board – up to 115 amps.
- **Six Styles** cover many applications from straight-to-board, and plug and header.
- **Terminal Options** make connections easy — screw, screwless and insulation displacement connectors (IDC).
- **2- and 3-Tier Versions** save valuable PCB space.
- **Mold-to-Length Designs** deliver the exact number of poles for the application.
- **Modular (Stackable) Designs** ease inventory needs.
- **Wire Entry Orientations** solve wire routing issues — horizontal, vertical, 30°, 35°, 45° and 60°.
- **Center Spacings** range from 2.54 to 15.00mm.
- **Custom Configurations** meet customer-specific industry standard requirements.



# Euro-Mag PCB Terminal Block Styles

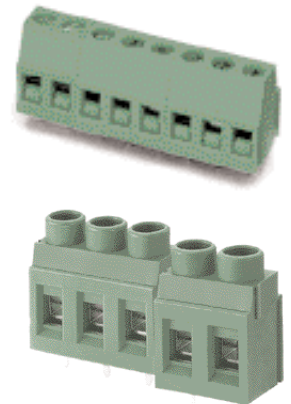
## Spring Clamp Blocks

- Direct-to-board wiring with secure-gripping spring clamp terminals
- Centers from 3.5 to 10mm
- Poles from 2 to 24
- Modular constructions permit inventory flexibility
- Ratings: 250V-300V, 6-16A
- 14 to 26 AWG wire range



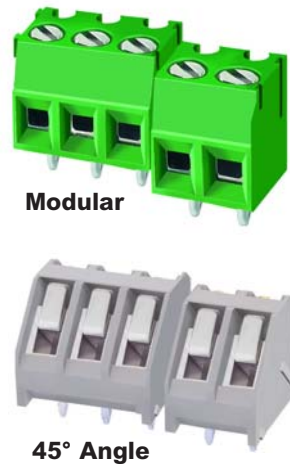
## High Current Blocks

- Simplify design and manufacturing, High Current terminal blocks allow handling lots of power right on the circuit board.
- Ratings: 28-600V, 28-115A
- Centers from 5 to 15mm
- Poles from 2 to 24
- Modular constructions permit inventory flexibility
- 2 to 24 AWG wire range
- 35° wire angle available



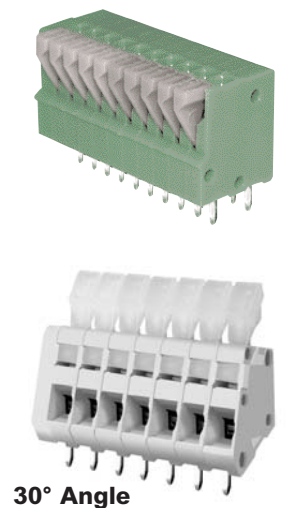
## Cage Clamp Blocks

- Economical direct-to-board with cage clamp wire terminals
- Centers from 3.5 to 7.62mm
- Poles from 2 to 24
- Modular constructions permit inventory flexibility
- Ratings: 300V, 8-16A
- 12 to 26 AWG wire range
- 35° and 45° wire angles available



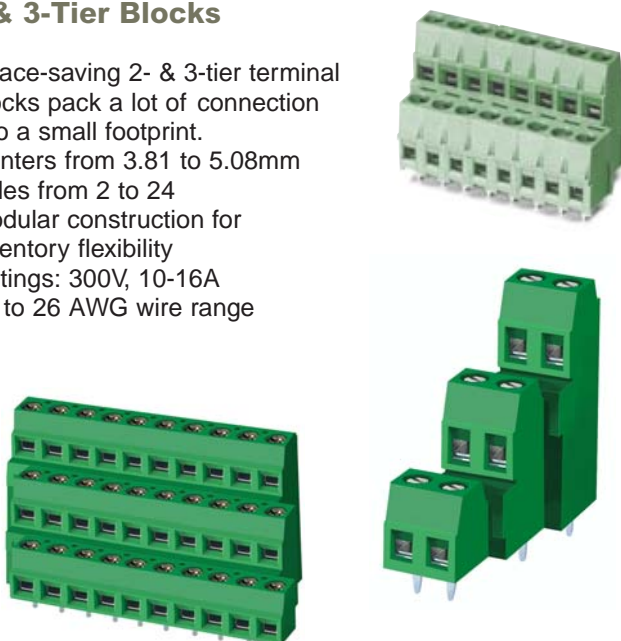
## Screwless Blocks

- Speed up assembly, screwless terminal block connections are made with a simple snap of the connector.
- Ratings: 63-300V, 6-10A
- Centers from 2.54 to 10.16mm
- Poles from 2 to 24
- Modular constructions for inventory flexibility
- 14 to 26 AWG wire range
- 30°, 45° and 60° wire angles available



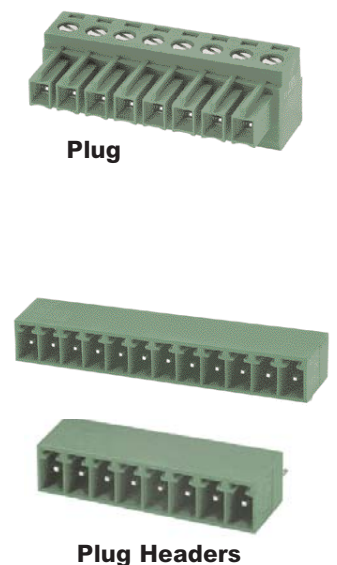
## 2- & 3-Tier Blocks

- Space-saving 2- & 3-tier terminal blocks pack a lot of connection into a small footprint.
- Centers from 3.81 to 5.08mm
- Poles from 2 to 24
- Modular construction for inventory flexibility
- Ratings: 300V, 10-16A
- 14 to 26 AWG wire range



## Pluggable Blocks

- Pluggable terminal blocks add flexibility to assembly procedures, ideal for equipment designs calling for easy removal of circuit boards for testing or service.
- Ratings: 160-300V, 8-16A
- Centers from 3.5 to 7.62mm
- Poles from 2 to 24
- 12 to 26 AWG wire range
- Horizontal or vertical header and plug orientations to meet wire routing demands.



# Specifications For full details, see the MAGNUM catalog, Lit Code 7001.

## Spring Clamp



| Euro-Mag Series | Centers (mm) | Modular | PCB Hole (mm) | # of Poles | Volts | Amps | Wire Range |
|-----------------|--------------|---------|---------------|------------|-------|------|------------|
| EM3123          | 3.5          | X       | 0.055         | 2-24       | 300   | 6    | 16-26      |
| EM2665          | 5.0          | —       | 0.055         | 2-24       | 300   | 10   | 14-22      |
| EM3660          | 5.0          | X       | 0.055         | 2-24       | 250   | 16   | 16-24      |
| EM3665          | 5.0          | —       | 0.055         | 2-24       | 300   | 10   | 16-22      |
| EM3675          | 5.0          | —       | 0.055         | 2-27       | 300   | 10   | 14-26      |
| EM3127          | 7.5          | X       | 0.055         | 2-24       | 300   | 10   | 14-22      |
| EM2661          | 10.0         | —       | 0.055         | 2-13       | 300   | 10   | 14-26      |
| EM3661          | 10.0         | X       | 0.055         | 2-14       | 300   | 10   | 14-26      |
| EM3671          | 10.0         | —       | 0.055         | 2-13       | 300   | 10   | 14-26      |

## Cage Clamp



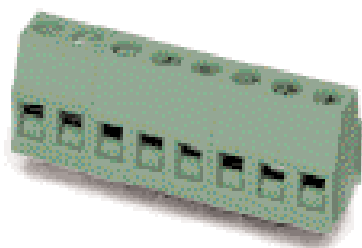
| Euro-Mag Series | Centers (mm) | Modular | PCB Hole (mm) | Poles | Volts | Amps | Wire Range | Angle |
|-----------------|--------------|---------|---------------|-------|-------|------|------------|-------|
| EM3923          | 3.5          | X       | 0.055         | 2-24  | 300   | 8    | 16-26      | —     |
| EM3503          | 3.81         | X       | 0.055         | 2-24  | 300   | 8    | 16-26      | —     |
| EM2585          | 5.0          | X       | 0.055         | 2-24  | 300   | 16   | 12-26      | —     |
| EM3225          | 5.0          | X       | 0.055         | 2-24  | 300   | 16   | 14-24      | 35°   |
| EM2205          | 5.0          | X       | 0.055         | 2-24  | 300   | 10   | 12-24      | 45°   |
| EM2505          | 5.08         | X       | 0.055         | 2-24  | 300   | 16   | 12-26      | —     |
| EM3228          | 5.08         | X       | 0.055         | 2-24  | 300   | 16   | 14-24      | 35°   |
| EM2507          | 7.5          | X       | 0.055         | 2-24  | 300   | 16   | 14-22      | —     |
| EM3227          | 7.5          | X       | 0.055         | 2-24  | 300   | 16   | 14-24      | 35°   |
| EM2506          | 7.62         | X       | 0.055         | 2-24  | 300   | 16   | 14-24      | —     |
| EM3226          | 7.62         | X       | 0.055         | 2-24  | 300   | 16   | 14-24      | 35°   |

## 2- & 3-Tier



| Euro-Mag Series | Centers (mm) | Modular | PCB Hole (mm) | Poles | Volts | Amps | Wire Range | Tiers |
|-----------------|--------------|---------|---------------|-------|-------|------|------------|-------|
| EM2403          | 3.81         | X       | 0.055         | 2-12  | 300   | 10   | 16-26      | 2     |
| EM2803          | 3.81         | X       | 0.055         | 2-12  | 300   | 10   | 16-26      | 3     |
| EM2445          | 5.0          | X       | 0.055         | 2-24  | 300   | 16   | 14-24      | 2     |
| EM2448          | 5.08         | X       | 0.055         | 2-24  | 300   | 16   | 14-24      | 2     |
| EM2855          | 5.0          | —       | 1.300         | 2-6   | 300   | 10   | 14-26      | 3     |

## High Current

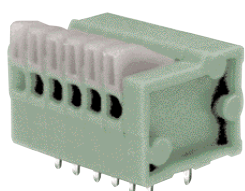
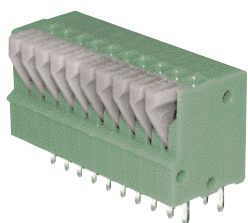


| Euro-Mag Series | Centers (mm) | Modular | PCB Hole (mm) | Poles | Volts | Amps | Wire Range | Angle |
|-----------------|--------------|---------|---------------|-------|-------|------|------------|-------|
| EM2905          | 5.0          | X       | 0.055         | 2-24  | 250   | 28   | 12-24      | —     |
| EM2908          | 5.08         | X       | 0.055         | 2-24  | 250   | 28   | 12-24      | —     |
| EM9126          | 6.35         | X       | 0.071         | 2-24  | 300   | 30   | 10-24      | —     |
| EM9127          | 7.5          | X       | 0.071         | 2-24  | 300   | 30   | 10-24      | —     |
| EM9128          | 7.62         | X       | 0.071         | 2-24  | 300   | 30   | 10-24      | —     |
| EM2909          | 9.52         | X       | 0.055         | 2-24  | 600   | 30   | 10-20      | 35°   |
| EM2919          | 9.52         | X       | 0.055         | 2-24  | 600   | 30   | 10-20      | —     |
| EM2929          | 10.16        | —       | 0.055         | 2-6   | 600   | 65   | 6-20       | —     |
| EM2939          | 15.0         | —       | 0.063         | 2-6   | 300*  | 115  | 2-20       | —     |
| EM3905          | 5.02         | X       | 0.055         | 2-24  | 250   | 28   | 12-24      | —     |
| EM3908          | 5.08         | X       | 0.055         | 2-24  | 250   | 28   | 12-24      | —     |

\* 600V with no bottom cover option.

# Specifications For full details, see the MAGNUM catalog, Lit Code 7001.

## Screwless



| Euro-Mag Series | Centers (mm) | Modular | PCB Hole (mm) | Poles | Volts | Amps | Wire Range | Angle |
|-----------------|--------------|---------|---------------|-------|-------|------|------------|-------|
| EM2742          | 2.54         | —       | 0.051         | 2-16  | 63    | 6    | 20-26      | —     |
| EM2783          | 3.5          | —       | 0.051         | 2-24  | 300   | 2    | 16-20      | 45°   |
| EM2802          | 2.54         | —       | 0.051         | 2-12  | 125   | 4    | 20-24      | 30°   |
| EM2785          | 5.0          | X       | 0.051         | 2-24  | 300   | 7    | 16-22      | 45°   |
| EM2778          | 5.08         | X       | 0.051         | 2-24  | 250   | 10   | 14-24      | —     |
| EM2795          | 5.08         | —       | 0.051         | 2-16  | 300   | 10   | 14-24      | —     |
| EM2796          | 7.62         | —       | 0.051         | 2-16  | 300   | 10   | 14-24      | —     |
| EM2791          | 10.16        | —       | 0.051         | 2-16  | 300   | 10   | 14-24      | —     |
| EM2816          | 7.62         | —       | 0.051         | 2-12  | 300   | 10   | 16-22      | 60°   |



## Pluggable

| Plug   | Block  | Centers | Terminal Type | PCB Hole (mm) | Poles | Volts | Amps | Wire Range | Mounting/Lead Orientation |
|--------|--------|---------|---------------|---------------|-------|-------|------|------------|---------------------------|
| EM3533 | EM2221 | 3.5     | Cage          | —             | 2-14  | 300   | 8    | 16-26      | Vertical                  |
|        |        | 3.5     | —             | 0.051         | 2-14  | 300   | 8    | —          | Vert/Horz                 |
| EM2413 | EM2201 | 3.5     | Cage          | —             | 2-12  | 300   | 8    | 16-26      | Vertical                  |
|        |        | 3.5     | —             | 0.051         | 2-12  | 300   | 8    | —          | Vert/Horz                 |
| EM3553 | EM3593 | 3.81    | Cage          | —             | 2-12  | 300   | 8    | 18-20      | Vertical                  |
| EM3543 |        | 3.81    | Cage          | —             | 2-12  | 300   | 8    | 16-24      | Horizontal                |
| EM3583 |        | 3.81    | IDC           | —             | 2-12  | 300   | 6    | 20-22      | Horizontal                |
|        |        | 3.81    | —             | 0.051         | 2-12  | 300   | 6    | —          | Vert/Horz                 |
| EM2423 | EM2211 | 3.81    | Cage          | —             | 2-12  | 300   | 8    | 16-26      | Vertical                  |
| EM2443 |        | 3.81    | Cage          | —             | 2-12  | 300   | 10   | 16-24      | Horizontal                |
|        |        | 3.81    | —             | 0.051         | 2-14  | 300   | 8    | —          | Vert/Horz                 |
| EM2525 | EM2535 | 5.0     | Cage          | —             | 2-24  | 300   | 16   | 12-26      | Vertical                  |
| EM2485 |        | 5.0     | Cage          | —             | 2-8   | 300   | 16   | 14-24      | Horizontal                |
| EM3105 |        | 5.0     | Cage          | —             | 2-12  | 300   | 16   | 14-24      | Vertical                  |
|        |        | 5.0     | —             | 0.055         | 2-24  | 300   | 16   | —          | Vert/Horz                 |
| EM2565 | EM2575 | 5.08    | Cage          | —             | 2-24  | 300   | 16   | 12-26      | Vert/Horz                 |
| EM2488 |        | 5.08    | Cage          | —             | 2-8   | 300   | 16   | 14-24      | Horizontal                |
| EM3108 |        | 5.08    | Cage          | —             | 2-24  | 300   | 16   | 14-24      | Vertical                  |
|        |        | 5.08    | —             | 0.055         | 2-24  | 300   | 16   | —          | Vert/Horz                 |
| EM2115 | EM2215 | 5.0     | Cage          | —             | 2-22  | 300   | 16   | 14-24      | Vert/Horz                 |
| EM3115 |        | 5.0     | Cage          | —             | 2-22  | 300   | 16   | 14-24      | Vertical                  |
|        |        | 5.0     | —             | 0.055         | 2-22  | 300   | 16   | —          | Vert/Horz                 |
| EM2118 | EM2218 | 5.08    | Cage          | —             | 2-22  | 300   | 16   | 14-24      | Vert/Horz                 |
| EM3118 |        | 5.08    | Cage          | —             | 2-22  | 300   | 16   | 14-24      | Vertical                  |
|        |        | 5.08    | —             | 0.055         | 2-22  | 300   | 12   | —          | Vert/Horz                 |
| EM3516 | EM3526 | 7.62    | Cage          | —             | 2-12  | 300   | 16   | 14-24      | Horizontal                |
|        |        | 7.62    | —             | 0.059         | 2-24  | 300   | 16   | —          | Vert/Horz                 |
| EM2416 | EM2426 | 7.62    | Cage          | —             | 2-12  | 300   | 16   | 14-24      | Vertical                  |
|        |        | 7.62    | —             | 0.059         | 2-12  | 300   | 16   | —          | Vert/Horz                 |
| EM5015 | EM5025 | 5.0     | Spring        | —             | 2-24  | 300   | 15   | 16-24      | Vert/Horz                 |
|        |        | 5.0     | —             | 0.053         | 2-24  | 300   | 15   | —          | Vertical                  |
| EM5035 | EM5045 | 5.0     | Spring        | —             | 2-24  | 160   | 10   | 16-24      | Horizontal                |
|        |        | 5.0     | —             | 0.047         | 2-24  | 160   | 10   | —          | Vertical                  |