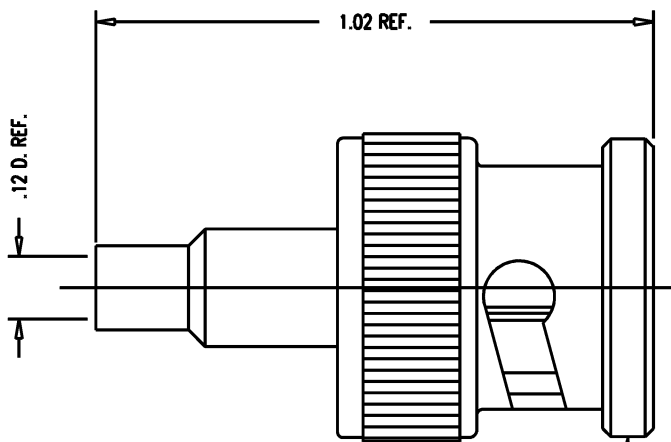


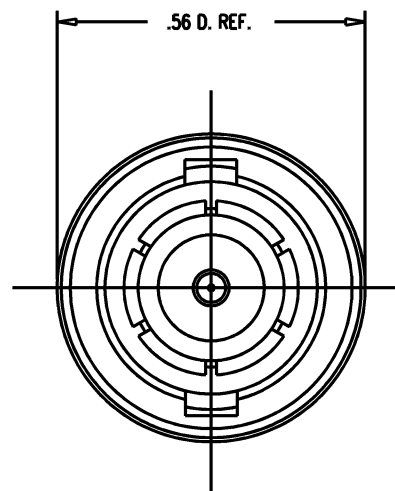
DASH NO.	M CODE	MADE FROM
----------	--------	-----------

# GSD

KC-59-557-M06



STAMP: KINGS KC-59-557-M06



**NOTES:**

- FOR USE WITH RG-174, 179, 187, 188 & 316 CABLE GROUPS.
- FOR CABLING INSTRUCTIONS SEE CP-5407.
- FOR CRIMPING USE DIE KTH-2138.
- INTERFACE PER MIL-STD-348, FIG. 301-1.
- MARK PACKAGE: KINGS KC-59-557-M06  
xxx (DATE CODE)
- MATERIALS:
  - INSULATORS: TEFLON, ASTM-D-4894
  - GASKET: SIL. RUB., ZZ-R-765
  - K-GRIP SLEEVE: COM. BRONZE, ASTM-B-135
  - SPRING WASHER } BER COP., ASTM-B-196
  - OUTER CONTACT }
  - ALL OTHER PARTS: BRASS, ASTM-B16
- FINISHES:
  - SPRING WASHER : SILVER PLATE PER QQ-S-365
  - CENTER CONTACT : HARD GOLD PLATE PER MIL-G-45204
  - ALL METAL PARTS: KINGS TARNISH RESISTANT NICKEL FINISH (TR-5)
- ELECTRICAL CHARACTERISTICS:
  - NOMINAL IMPEDANCE: 50 OHMS
  - VOLTAGE RATING: 500 VRMS
  - FREQUENCY RANGE: DC TO 4 GHz

**REVISIONS**

ISSUE	CHANGES
4	CN 36487 E REDRAWN KH 07/31/95
5	CN 37053 D JJS 07/08/96

KAM5936

SCALE 4:1

APPROX SURFACE AREA

WAS: E-7339

USED ON

REF:

PLUG, BNC

DRAWN	KH	DATE	07/31/95
-------	----	------	----------

DESIGN	MJB	DATE	08/01/95
--------	-----	------	----------

APPR.	DATE
-------	------

**KINGS**  
ELECTRONICS CO., INC.  
TUCKAHOE, NEW YORK 10707

KC-59-557-M06

# GSD