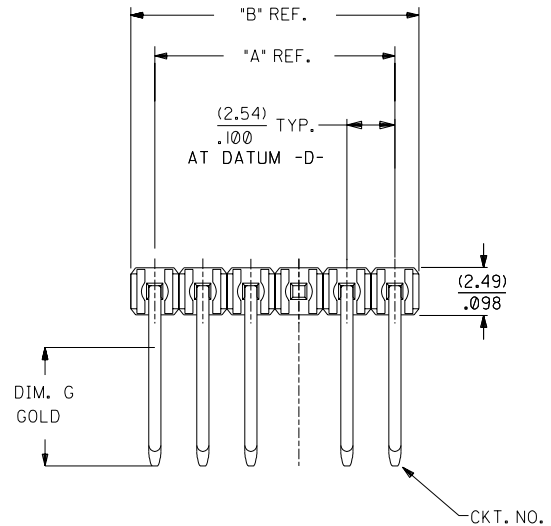
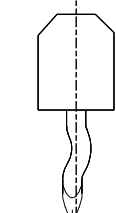
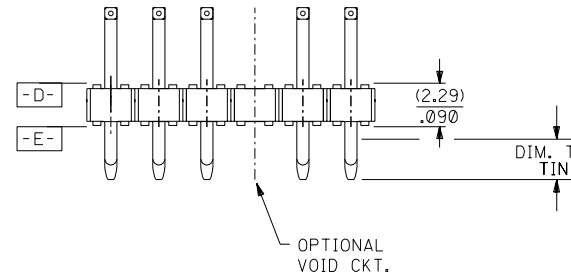


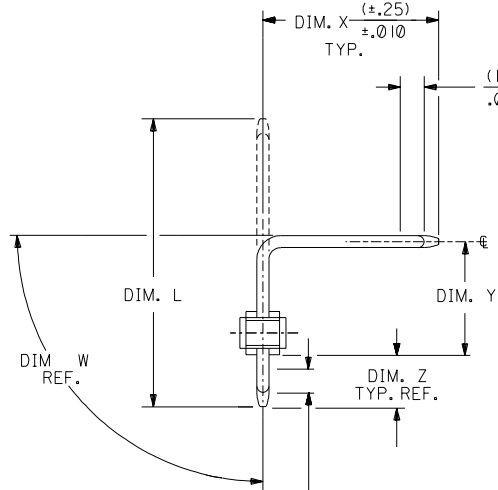
- MATERIAL: 30% GLASS FILLED NYLON 46,94V-0 COLOR BLACK
- PIN PUSHOUT 3 LBS. MIN.
- SOLDERABILITY PER ES-152.
- PLATING: CONFORMS TO SDES-88
 - (159) PREPLATED TIN/LEAD .000150 MIN OVER NICKEL
 - (567) SELECT GOLD .000015 MIN. SELECT TIN/LEAD .000100 MIN. OVER .000050 MIN NICKEL
 - (569) SELECT GOLD .000030 MIN. SELECT TIN/LEAD .000100 MIN. OVER .000050 MIN NICKEL
- INDIVIDUAL CIRCUIT SIZES ARE CUT FROM 36 CIRCUIT PARTS AND ARE NOT STACKABLE END TO END OF .100 CENTERS
- PRODUCT SPECIFICATION: PS-10-07



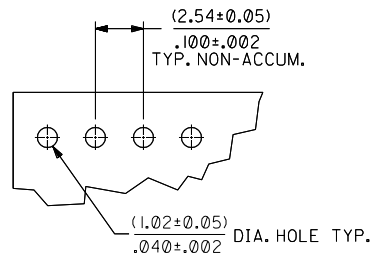
CENTERLINE OF PIN IN AREA SHOWN NOT TO VARY FROM CENTERLINE OF PIN AT DATUM -D- BY MORE THAN (FOR DIM X OF .350 OR LESS) .008 IN ANY DIRECTION (FOR DIM X OF .351 OR MORE) .012 IN ANY DIRECTION



KINK PIN DETAIL



CENTERLINE OF PIN IN AREA SHOWN NOT TO VARY FROM CENTERLINE OF PIN AT DATUM -E- BY MORE THAN .005 IN ANY DIRECTION.



TYP. HOLE PATTERN FOR .062 THK. PCB

NO. OF CKTS.	DIM. A	DIM. B
2	.100 (2.54)	.200 (5.08)
3	.200 (5.08)	.300 (7.62)
4	.300 (7.62)	.400 (10.16)
5	.400 (10.16)	.500 (12.70)
6	.500 (12.70)	.600 (15.24)
7	.600 (15.24)	.700 (17.78)
8	.700 (17.78)	.800 (20.32)
9	.800 (20.32)	.900 (22.86)
10	.900 (22.86)	1.000 (25.40)
11	1.000 (25.40)	1.100 (27.94)
12	1.100 (27.94)	1.200 (30.48)
13	1.200 (30.48)	1.300 (33.02)
14	1.300 (33.02)	1.400 (35.56)
15	1.400 (35.56)	1.500 (38.10)
16	1.500 (38.10)	1.600 (40.64)
17	1.600 (40.64)	1.700 (43.18)
18	1.700 (43.18)	1.800 (45.72)
19	1.800 (45.72)	1.900 (48.26)
20	1.900 (48.26)	2.000 (50.80)
21	2.000 (50.80)	2.100 (53.34)
22	2.100 (53.34)	2.200 (55.88)
23	2.200 (55.88)	2.300 (58.42)
24	2.300 (58.42)	2.400 (60.96)
25	2.400 (60.96)	2.500 (63.50)
26	2.500 (63.50)	2.600 (66.04)
27	2.600 (66.04)	2.700 (68.58)
28	2.700 (68.58)	2.800 (71.12)
29	2.800 (71.12)	2.900 (73.66)
30	2.900 (73.66)	3.000 (76.20)
31	3.000 (76.20)	3.100 (78.74)
32	3.100 (78.74)	3.200 (81.28)
33	3.200 (81.28)	3.300 (83.82)
34	3.300 (83.82)	3.400 (86.36)
35	3.400 (86.36)	3.500 (88.90)
36	3.500 (88.90)	3.600 (91.44)

4	14			
3	H			
2	H	14	ADD -0648/0682	
1	14		UCR2002-1147	
			6/27/02 SAMIEC	

DIMENSIONS SHOWN (METRIC) INCH UNLESS OTHERWISE SPECIFIED TOLERANCES: ANGULAR ± 1/2°		▽ = 0 ▽ = 0 REVISE ONLY ON CAD SYSTEM	
3 PLACE ± .010	INCH	TITLE	
2 PLACE ± .014 ± 0.25	METRIC	HEADER ASSY., SINGLE ROW	
1 PLACE ± 0.36		.100 @ BREAKAWAY	
DRAFT WHERE APPLICABLE MUST REMAIN WITHIN DIMENSIONS		42376 SERIES DWG	
DRWG. BY: JJS	CHK'D. BY: PATEL	MOLEX INCORPORATED	SHEET NO. DATE
APP'D. BY: LENZ	SCALE: :	U.S.A.	1 OF 4 9 / 2 / 88
SEE CHART		SDA-42376	
FILE NAME: S42376X1		THIS DRAWING CONTAINS INFORMATION THAT IS PROPRIETARY TO MOLEX INC. AND SHOULD NOT BE USED WITHOUT WRITTEN PERMISSION.	

	13	12	11	10	9	8	7	6	42376		4	3	2	1	
J	ENG. NO.	HEADER NO.	PIN NO.	DIM. L REF	DIM. X	DIM. Y	DIM. Z	DIM. W	GOLD LOC. DIM. G	TIN LOC. DIM. T	NO OF CKTS	VOID CKTS	PACKAGING PERFORMANCE**	KINK PINS	EDP NO ON COL
J	A-42376-0002 TO -0036	42312-0002/0036	42663-BKA159 PHOS BRONZE	.600 (15.24)	.361 (9.17)	.142 (3.61)	.120 (3.05)	90°	N/A ()	OVERALL ()	2-36	NONE	BULK 40873-0041	NO	1
	A-42376-0037 TO -0071	42312-0002/0036	42663-BKB567 PHOS BRONZE	.600 (15.24)	.361 (9.17)	.142 (3.61)	.120 (3.05)	90°	.180 (4.57)	.135 (3.43)	2-36	NONE	BULK 40873-0041	NO	2
	A-42376-0072 TO -0106	42312-0002/0036	42663-BKB569 PHOS BRONZE	.600 (15.24)	.361 (9.17)	.142 (3.61)	.120 (3.05)	90°	.180 (4.57)	.135 (3.43)	2-36	NONE	BULK 40873-0041	NO	3
I	A-42376-0107 TO -0141	42312-0002/0036	42663-CXA159 PHOS BRONZE	.750 (19.05)	.405 (10.29)	.248 (6.30)	.120 (3.05)	90°	N/A ()	OVERALL ()	2-36	NONE	BULK 40873-0041	NO	4
	A-42376-0142 TO -0176	42312-0002/0036	42663-CXB567 PHOS BRONZE	.750 (19.05)	.405 (10.29)	.248 (6.30)	.120 (3.05)	90°	.180 (4.57)	.135 (3.43)	2-36	NONE	BULK 40873-0041	NO	5
	A-42376-0177 TO -0211	42312-0002/0036	42663-CXB569 PHOS BRONZE	.750 (19.05)	.405 (10.29)	.248 (6.30)	.120 (3.05)	90°	.180 (4.57)	.135 (3.43)	2-36	NONE	BULK 40873-0041	NO	6

H

	COLUMN NO. 1			COLUMN NO. 2			COLUMN NO. 3			COLUMN NO. 4			COLUMN NO. 5			COLUMN NO. 6		
	EDP NO.	ENG. NO.	NO OF CKTS	EDP NO.	ENG. NO.	NO OF CKTS	EDP NO.	ENG. NO.	NO OF CKTS	EDP NO.	ENG. NO.	NO OF CKTS	EDP NO.	ENG. NO.	NO OF CKTS	EDP NO.	ENG. NO.	NO OF CKTS
G	22-28-6020	A-42376-0002	2	22-28-6022	A-42376-0037	2	22-28-6024	A-42376-0072	2	22-28-6021	A-42376-0107	2	22-28-6023	A-42376-0142	2	22-28-6025	A-42376-0177	2
	22-28-6030	A-42376-0003	3	22-28-6032	A-42376-0038	3	22-28-6034	A-42376-0073	3	22-28-6031	A-42376-0108	3	22-28-6033	A-42376-0143	3	22-28-6035	A-42376-0178	3
	22-28-6040	A-42376-0004	4	22-28-6042	A-42376-0039	4	22-28-6044	A-42376-0074	4	22-28-6041	A-42376-0109	4	22-28-6043	A-42376-0144	4	22-28-6045	A-42376-0179	4
	22-28-6050	A-42376-0005	5	22-28-6052	A-42376-0040	5	22-28-6054	A-42376-0075	5	22-28-6051	A-42376-0110	5	22-28-6053	A-42376-0145	5	22-28-6055	A-42376-0180	5
	22-28-6060	A-42376-0006	6	22-28-6062	A-42376-0041	6	22-28-6064	A-42376-0076	6	22-28-6061	A-42376-0111	6	22-28-6063	A-42376-0146	6	22-28-6065	A-42376-0181	6
	22-28-6070	A-42376-0007	7	22-28-6072	A-42376-0042	7	22-28-6074	A-42376-0077	7	22-28-6071	A-42376-0112	7	22-28-6073	A-42376-0147	7	22-28-6075	A-42376-0182	7
	22-28-6080	A-42376-0008	8	22-28-6082	A-42376-0043	8	22-28-6084	A-42376-0078	8	22-28-6081	A-42376-0113	8	22-28-6083	A-42376-0148	8	22-28-6085	A-42376-0183	8
	22-28-6090	A-42376-0009	9	22-28-6092	A-42376-0044	9	22-28-6094	A-42376-0079	9	22-28-6091	A-42376-0114	9	22-28-6093	A-42376-0149	9	22-28-6095	A-42376-0184	9
F	22-28-6100	A-42376-0010	10	22-28-6102	A-42376-0045	10	22-28-6104	A-42376-0080	10	22-28-6101	A-42376-0115	10	22-28-6103	A-42376-0150	10	22-28-6105	A-42376-0185	10
	22-28-6110	A-42376-0011	11	22-28-6112	A-42376-0046	11	22-28-6114	A-42376-0081	11	22-28-6111	A-42376-0116	11	22-28-6113	A-42376-0151	11	22-28-6115	A-42376-0186	11
	22-28-6120	A-42376-0012	12	22-28-6122	A-42376-0047	12	22-28-6124	A-42376-0082	12	22-28-6121	A-42376-0117	12	22-28-6123	A-42376-0152	12	22-28-6125	A-42376-0187	12
	22-28-6130	A-42376-0013	13	22-28-6132	A-42376-0048	13	22-28-6134	A-42376-0083	13	22-28-6131	A-42376-0118	13	22-28-6133	A-42376-0153	13	22-28-6135	A-42376-0188	13
	22-28-6140	A-42376-0014	14	22-28-6142	A-42376-0049	14	22-28-6144	A-42376-0084	14	22-28-6141	A-42376-0119	14	22-28-6143	A-42376-0154	14	22-28-6145	A-42376-0189	14
	22-28-6150	A-42376-0015	15	22-28-6152	A-42376-0050	15	22-28-6154	A-42376-0085	15	22-28-6151	A-42376-0120	15	22-28-6153	A-42376-0155	15	22-28-6155	A-42376-0190	15
E	22-28-6160	A-42376-0016	16	22-28-6162	A-42376-0051	16	22-28-6164	A-42376-0086	16	22-28-6161	A-42376-0121	16	22-28-6163	A-42376-0156	16	22-28-6165	A-42376-0191	16
	22-28-6170	A-42376-0017	17	22-28-6172	A-42376-0052	17	22-28-6174	A-42376-0087	17	22-28-6171	A-42376-0122	17	22-28-6173	A-42376-0157	17	22-28-6175	A-42376-0192	17
	22-28-6180	A-42376-0018	18	22-28-6182	A-42376-0053	18	22-28-6184	A-42376-0088	18	22-28-6181	A-42376-0123	18	22-28-6183	A-42376-0158	18	22-28-6185	A-42376-0193	18
	22-28-6190	A-42376-0019	19	22-28-6192	A-42376-0054	19	22-28-6194	A-42376-0089	19	22-28-6191	A-42376-0124	19	22-28-6193	A-42376-0159	19	22-28-6195	A-42376-0194	19
	22-28-6200	A-42376-0020	20	22-28-6202	A-42376-0055	20	22-28-6204	A-42376-0090	20	22-28-6201	A-42376-0125	20	22-28-6203	A-42376-0160	20	22-28-6205	A-42376-0195	20
	22-28-6210	A-42376-0021	21	22-28-6212	A-42376-0056	21	22-28-6214	A-42376-0091	21	22-28-6211	A-42376-0126	21	22-28-6213	A-42376-0161	21	22-28-6215	A-42376-0196	21
D	22-28-6220	A-42376-0022	22	22-28-6222	A-42376-0057	22	22-28-6224	A-42376-0092	22	22-28-6221	A-42376-0127	22	22-28-6223	A-42376-0162	22	22-28-6225	A-42376-0197	22
	22-28-6230	A-42376-0023	23	22-28-6232	A-42376-0058	23	22-28-6234	A-42376-0093	23	22-28-6231	A-42376-0128	23	22-28-6233	A-42376-0163	23	22-28-6235	A-42376-0198	23
	22-28-6240	A-42376-0024	24	22-28-6242	A-42376-0059	24	22-28-6244	A-42376-0094	24	22-28-6241	A-42376-0129	24	22-28-6243	A-42376-0164	24	22-28-6245	A-42376-0199	24
	22-28-6250	A-42376-0025	25	22-28-6252	A-42376-0060	25	22-28-6254	A-42376-0095	25	22-28-6251	A-42376-0130	25	22-28-6253	A-42376-0165	25	22-28-6255	A-42376-0200	25
	22-28-6260	A-42376-0026	26	22-28-6262	A-42376-0061	26	22-28-6264	A-42376-0096	26	22-28-6261	A-42376-0131	26	22-28-6263	A-42376-0166	26	22-28-6265	A-42376-0201	26
	22-28-6270	A-42376-0027	27	22-28-6272	A-42376-0062	27	22-28-6274	A-42376-0097	27	22-28-6271	A-42376-0132	27	22-28-6273	A-42376-0167	27	22-28-6275	A-42376-0202	27
	22-28-6280	A-42376-0028	28	22-28-6282	A-42376-0063	28	22-28-6284	A-42376-0098	28	22-28-6281	A-42376-0133	28	22-28-6283	A-42376-0168	28	22-28-6285	A-42376-0203	28
C	22-28-6290	A-42376-0029	29	22-28-6292	A-42376-0064	29	22-28-6294	A-42376-0099	29	22-28-6291	A-42376-0134	29	22-28-6293	A-42376-0169	29	22-28-6295	A-42376-0204	29
	22-28-6300	A-42376-0030	30	22-28-6302	A-42376-0065	30	22-28-6304	A-42376-0100	30	22-28-6301	A-42376-0135	30	22-28-6303	A-42376-0170	30	22-28-6305	A-42376-0205	30
	22-28-6310	A-42376-0031	31	22-28-6312	A-42376-0066	31	22-28-6314	A-42376-0101	31	22-28-6311	A-42376-0136	31	22-28-6313	A-42376-0171	31	22-28-6315	A-42376-0206	31
	22-28-6320	A-42376-0032	32	22-28-6322	A-42376-0067	32	22-28-6324	A-42376-0102	32	22-28-6321	A-42376-0137	32	22-28-6323	A-42376-0172	32	22-28-6325	A-42376-0207	32
	22-28-6330	A-42376-0033	33	22-28-6332	A-42376-0068	33	22-28-6334	A-42376-0103	33	22-28-6331	A-42376-0138	33	22-28-6333	A-42376-0173	33	22-28-6335	A-42376-0208	33
	22-28-6340	A-42376-0034	34	22-28-6342	A-42376-0069	34	22-28-6344	A-42376-0104	34	22-28-6341	A-42376-0139	34	22-28-6343	A-42376-0174	34	22-28-6345	A-42376-0209	34
B	22-28-6350	A-42376-0035	35	22-28-6352	A-42376-0070	35	22-28-6354	A-42376-0105	35	22-28-6351	A-42376-0140	35	22-28-6353	A-42376-0175	35	22-28-6355	A-42376-0210	35
	22-28-6360	A-42376-0036	36	22-28-6362	A-42376-0071	36	22-28-6364	A-42376-0106	36	22-28-6361	A-42376-0141	36	22-28-6363	A-42376-0176	36	22-28-6365	A-42376-0211	36

A	SEE SHEET I		C	SEE SHEET I		DIMENSIONS SHOWN METRIC INCH UNLESS OTHERWISE SPECIFIED TOLERANCES ANGLES IN ° P/P INCH METRIC 3 PLACE ± ± 2 PLACE ± ± 1 PLACE ± ± DRAFT WHERE APPLICABLE MUST REMAIN WITHIN DIMENSIONS DRWG. NO. 542376X2 DRWG. BY JUS DRWG. DATE APP'D. BY LENZ SCALE :	THIS DRAWING CONTAINS INFORMATION THAT IS PROPRIETARY TO MOLEX INC. AND SHOULD NOT BE USED WITHOUT WRITTEN PERMISSION.	REVISE ONLY ON CAD SYSTEM TITLE HEADER ASSY., RT. ANGLE .100 @ BREAKAWAY 42376 SERIES DWG SHEET NO. 2 DATE 09/12/88 MOLEX INCORPORATED LITTLE ROCK, AR, U.S.A. PART NO. SDA-42376 FILE NAME: S42376X2
	SEE SHEET I		A	SEE SHEET I				
	SEE SHEET I		5	SEE SHEET I				
	SEE SHEET I		4	SEE SHEET I				
	SEE SHEET I		3	SEE SHEET I				
	SEE SHEET I		2	SEE SHEET I				
SEE SHEET I		1	SEE SHEET I		LTR. REVISIONS LTR. REVISIONS			

STANDARD PRODUCT WITHOUT KINKS

	13	12	11	10	9	8	7	6	5	4	3	2	1	
--	----	----	----	----	---	---	---	---	---	---	---	---	---	--



Datasheet

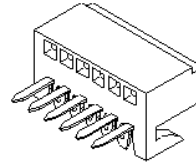
Board-to-Board

2.54mm (.100") KK® Bottom Entry, Receptacle - KK® Right Angle, Flat, Breakaway Header 4455b:42376

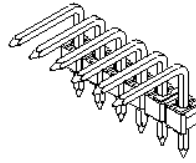
[[Home](#) > [Products](#) > [Board-to-Board](#) > [Datasheet](#)]

[Help](#)

Status	Active
PCB Orientation	Right Angle
Pitch / Center Spacing	2.54mm (.100")
Circuits / Positions	2, 3, 4, 5, 6, 7, 8, 9, 10, 11, 12, 13, 14, 15, 16, 17, 18, 19, 20, 21, 22, 23, 24, 25
Mated Height (H)	2.49mm (.098")
Mated Width (W)	2.29mm (.090")
Rows	1
Polarized to Mating Part	Yes, No
Lock to Mating Part	None
Designed In	Inches
Temperature Range	0°C to +75°C
Plating Contact	Gold (Au), Tin (Sn)
Durability [cycles]	25
Current-max [amps]	2.5A
Voltage-max [volts]	250V
Contact Resistance [ohms]	20 milliohms max.
Withstanding Voltage	1500V
Insulation Resistance [ohms]	50,000 Megohms min.
Mating Force-max. (per circuit)	2.0N (0.45 lb)
Unmating Force-min. (per circuit)	0.6N (0.13 lb)
Receptacle - Orientation	Bottom Entry
Receptacle - Mounting	Through Hole
Receptacle - PCB Thickness	1.60mm (.063")
Receptacle - Surface Mount Compatible	No
Receptacle - Polarized to PCB	No
Receptacle - PCB Retention	*
Receptacle - Stagger Tails	No
Receptacle - Product Specification	PS-10-07
Receptacle - Packaging	Tray
Receptacle - UL File No.	E29179
Receptacle - CSA File No.	LR19980
Receptacle - Housing Material	Nylon
Receptacle - Flammability	UL 94V-0
Receptacle - Contact	Brass
Header - Orientation	Right Angle
Header - Mounting	Through Hole
Header - PCB Thickness	1.60mm (.063")
Header - Surface Mount Compatible	Yes
Header - Polarized to PCB	No
Header - PCB Retention	None
Header - Stagger Tails	No
Shrouded	No
Breakaway	Yes
Pin Header	Yes
Pin Size	0.64mm (.025") Square
Header - Product Specification	PS-10-07
Header - Packaging	Bag



Female Receptacle 4455b



Male Header 42376

Features and Benefits

Receptacle:

- Sizes 2 to 25 circuits
- End-to-end stackable
- Mating header must be long enough to accommodate board thickness
- See 42625 Series for high temperature version

Header:

- Sizes 2 to 36 circuits
- Surface mount compatible
- Available with kinked PC tails
- .361 and .405" standard mating lengths
- Tin and 15 or 30µ" Gold plating
- Voids optional

Header - UL File No.	E29179
Header - CSA File No.	LR19980
Header - Housing Material	Polyester, Glass-filled
Header - Color	Black
Header - Flammability	UL 94V-0
Header - Contact	Phosphor Bronze
Application Tooling	Cutting Tools for Breakaway Headers
Product Name	KK®
Molex Series	4455b, 42376
Marketing Series and Version	4455, 42376