

New Jersey Semi-Conductor Products, Inc.

20 STERN AVE.
 SPRINGFIELD, NEW JERSEY 07081
 U.S.A.

TELEPHONE: (973) 376-2922
 (212) 227-6005
 FAX: (973) 376-8960

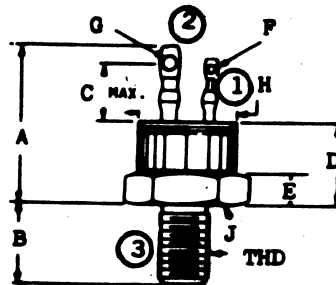
PARAMETERS

2N5171

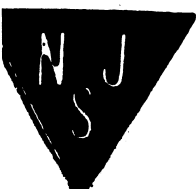
SCR, V(DRM) = 600 V TO 699.9 V

Description: SCR, V(DRM) = 600 V to 699.9 V
 Manufacturer..... many
 Mil/High-Rel? (Y/N).....
 V(drm) Max..... 600
 It(stat) Max. (A)..... 202
 @Temp. (test) (xC)..... 65#
 Supp Curr. I(TSM)..... 240W
 Firing Char-Igt Max..... 40m
 Firing Char-Vgt Max..... 1.5
 Id(off) Max. (A)..... 5.0m
 @Temp. (test) (xC)..... 100u
 I(h) Max. (A)..... 50m
 V(T) Max..... 1.7
 @It (A)..... 41
 Dv/Dt Worst Case..... 50B%
 t(switch) Off Typ. Time (S)... 1.0u
 @It (test) (A)..... 20
 t(switch) Off Typ. Time (S)... 20u
 Oper. Temp (xC) Min..... -40
 Oper. Temp (xC) Max..... 100u
 Pkg Style..... StR-1/4
 Surface Mounted (Y/N)..... N

u Junction Temperature # Case Temperature % @ above 125xC B Typical
 2 It(rms) M Over Full Temperature Range



A	B	C	D	E	F	G	H	J	THD
1.193	.422		.523		.055	.080	.544	.548	1/4-28UNF-2A
MAX	.453		MAX		.085	.165	MAX	.563	



NJ Semi-Conductors reserves the right to change test conditions, parameter limits and package dimensions without notice. Information furnished by NJ Semi-Conductors is believed to be both accurate and reliable at the time of going to press. However NJ Semi-Conductors assumes no responsibility for any errors or omissions discovered in its use. NJ Semi-Conductors encourages customers to verify that datasheets are current before placing orders.