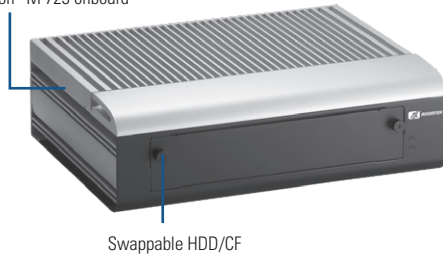


tBOX320-852-FL

Fanless Embedded System with Intel® Core™2 Duo Processor 2.26 GHz and Intel® GM45 Chipset for Railway PC

Intel® Core™2 Duo SP9300 2.26 GHz
or Intel® Celeron® M 723 onboard



▲ Front view

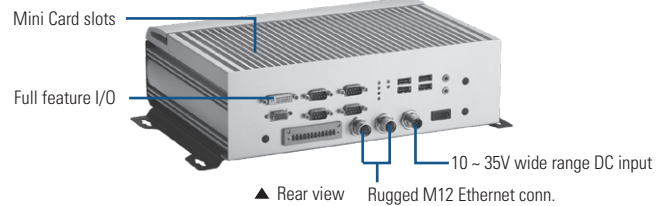


Specifications

Standard Color	Silver-Black
Construction	Aluminum extrusion and heavy-duty steel, IP40
CPU	Intel® Core™2 Duo SP9300 2.26 GHz processor or Intel® Celeron® M 723 1.2 GHz processor onboard
System Memory	DDR3-1333 2 GB DRAM onboard
Chipset	Intel® GM45 + ICH9M
BIOS	AMI
System I/O Outlet	4 x isolated RS-232/422/485 (COM 1 ~ 4), console re-direction supported 1 x VGA 1 x DVI-D 1 x HD Audio (Mic-in/Line-out) 2 x 10/100/1000Mbps Ethernet (M12 female D-code 4-pin for 10/100Mbps, A-code 8-pin for 10/100/1000Mbps) 4 x USB 2.0 1 x isolated DIO (6-IN & 2-OUT) 1 x VDC power input connector 1 x isolated DI/DO power input connector 3 x antenna opening
Watchdog Timer	255 levels, 1~255 sec.
Storage	2 x 2.5" SATA HDD drive bay 1 x CompactFlash™
Expansion Interface	2 x PCI Express Mini Card 1 x SIM card
System Indicator	1 x green LED for system power-on 1 x red LED for HDD active 1 x green LED for LAN1 link 1 x green/yellow LED for LAN1 speed 1 x green LED for LAN2 link 1 x green/yellow LED for LAN2 speed
Power Supply	DC 12~32V input with isolation support Default rating: DC24V M12 5-pin connector
Power Consumption	6.7A @ 12V 3.4A @ 24V 2.5A @ 32V
Operating Temperature	-25°C ~ +55°C (77°C ~ 130°C) (with W.T. HDD)
Storage Temperature	-40°C ~ +80°C (-40°C ~ +176°C)
Humidity	10% ~ 90% , non-condensing
Vibration Endurance	2 Grms (5-500Hz, X, Y, Z directions)

Features

- Supports onboard Intel® Core™2 Duo SP9300 2.26 GHz or Intel® Celeron® M 723 1.2 GHz processor
- Intel® GM45 + ICH9M chipset
- Fanless operation
- Operatin temperature range of -25°C ~ +55°C
- 4 isolated RS-232/422/485 ports
- High performance DDR3-1333 2 GB DRAM onboard
- One 2.5" swappable SATA drive bay, 1 internal SATA drive bay and one CompactFlash™
- 2 internal PCI Express Mini Card slots with one SIM slot
- Lockable I/O interface and M12 LAN connector
- Comply to fire protection of railway vehicles Europe standard PrCEN TS 45545-2



▲ Rear view Rugged M12 Ethernet conn.

Dimensions	288 mm (11.33") (W) x 211 mm (8.3") (D) x 85.7 mm (3.37") (H)
Weight (net/gross)	5.06 kg (11.15 lb)/6.5 kg (14.33 lb)
Certification	CE, EN50155, EN50121, EN45545, EN60950 compliance
EOS Support	XPE, WinCE, Linux
*XPE: Windows® XP Embedded	

Ordering Information

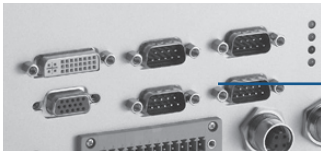
Standard	
tBOX320-852-FL-2.26G-DC	Fanless embedded system with Intel® Core™2 Duo SP9300 2.26 GHz processor, 4 COM, 4 USB, CF, dual HDD support, onboard 2 GB DDR3-1333 DRAM and 4-pin M12 10/100Mbps Ethernet
tBOX320-852-FL-1.2G-DC	Fanless embedded system with Intel® Celeron® M 723 1.2 GHz processor, 4 COM, 4 USB, CF, dual HDD support and onboard 2 GB DRAM and 4-pin M12 10/100Mbps Ethernet
tBOX320-852-FL-2.26G-DC-G	Fanless embedded system with Intel® Core™2 Duo SP9300 2.26 GHz processor, 4 COM, 4 USB, CF, dual HDD support, onboard 2 GB DDR3-1333 DRAM and 8-pin M12 10/100/1000Mbps Ethernet
tBOX320-852-FL-1.2G-DC-G	Fanless embedded system with Intel® Celeron® M 723 1.2 GHz processor, 4 COM, 4 USB, CF, dual HDD support, onboard 2 GB DDR3-1333 DRAM and 8-pin M12 10/100/1000Mbps Ethernet

Optional	
2.5" SATA HDD	40 GB or above
CompactFlash™	1 GB or above
3G module	826K3101010E
Wifi module	826K3101050E
Wifi+Bluetooth	826K3101060E
GPS module	82606200270E
Graphic accelerator codec	826K3101070E
M12 LAN cable	594N3202710E
M12 power cable	594B8120B30E
M12 Giga LAN cable	594N3202730E

*Specifications and certifications are based on options and may vary.

* All specifications and photos are subject to change without notice.

Expansion & Installation



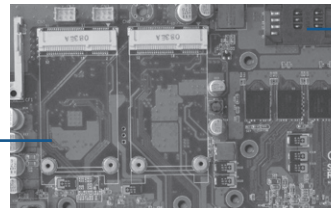
Lockable I/O connector



Easy access opening for HDD & CF

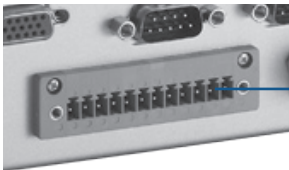


M12 type connector

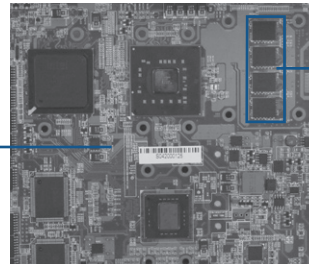


2 x Mini Card

SIM slot



Isolated digital I/O



BGA type CPU & chipset

2 GB DDR3-1333 DRAM onboard

- Overview
- Embedded Systems
- Embedded Systems for Transportation
- Embedded Field Controllers
- Embedded MicroBoxes
- Industrial Barebone Systems
- Industrial Chassis
- Backplanes
- Power Supplies
- Peripherals & Accessories

Packing List

- 1 x quick manual
- 1 x driver CD
- 1 x screw pack
- 4 x foot pad
- 8 x HDD anti-vibration damper
- 1 x wallmount Kit

Power Protection

DC Version

- OVP (over voltage protection)
- UVP (under voltage protection)
- SCP (short circuit protection)

Dimensions

