

PLEASE CHECK WWW.MOLEX.COM FOR LATEST PART INFORMATION

Part Number: [0503518000](#)
Status: **Active**
Overview: [minilock](#)
Description: 2.50mm (.098") Pitch Mini-Lock™ Wire-to-Board and Wire-to-Wire Crimp Terminal, Phosphor Bronze, Reel, for 51102, 51103 and 51163 Housings

Documents:

3D Model	Product Specification PS-51103-013 (PDF)
Drawing (PDF)	Product Specification PS-51103-025 (PDF)
Product Specification PS-51102-002 (PDF)	Product Specification PS-51103-026 (PDF)
Product Specification PS-51103-001 (PDF)	Product Specification PS-51103-027 (PDF)
Product Specification PS-51103-002 (PDF)	Product Specification PS-51163-002 (PDF)
Product Specification PS-51103-005 (PDF)	Product Specification PS-51198-003 (PDF)
Product Specification PS-51103-006 (PDF)	RoHS Certificate of Compliance (PDF)

General

Product Family	Crimp Terminals
Series	50351
Crimp Quality Equipment	Yes
Overview	minilock
Product Name	Mini-Lock™

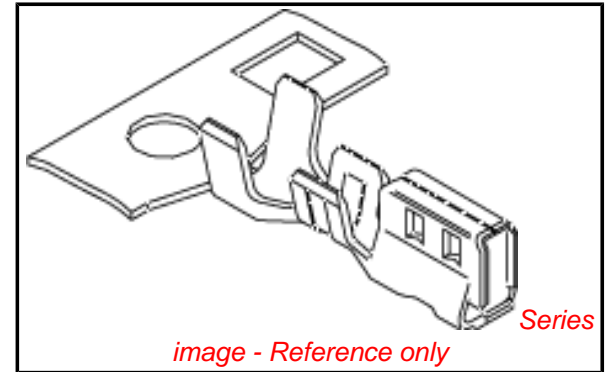
Physical

Gender	Female
Material - Metal	Phosphor Bronze
Material - Plating Mating	Tin
Material - Plating Termination	Tin
Packaging Type	Reel
Plating min: Mating (µin)	36
Plating min: Mating (µm)	0.90
Plating min: Termination (µin)	36
Plating min: Termination (µm)	0.90
Termination Interface: Style	Crimp or Compression
Wire Insulation Diameter	1.15-1.80mm (.045-.071")
Wire Size AWG	22, 24, 26, 28
Wire Size mm²	N/A

Material Info

Reference - Drawing Numbers

Packaging Specification	SPK-50351-001
Product Specification	PS-51102-002, PS-51103-001, PS-51103-002, PS-51103-005, PS-51103-006, PS-51103-013, PS-51103-025, PS-51103-026, PS-51103-027, PS-51163-002, PS-51198-003, RPS-500292-001, RPS-51103-001, RPS-51103-002, RPS-51103-003, RPS-51103-004, RPS-51103-009, RPS-51103-010, RPS-51103-011, RPS-51103-012, RPS-51103-014, RPS-51103-016, RPS-51103-017, RPS-51103-018, RPS-51103-019, RPS-51103-020, RPS-51103-021, RPS-51103-022, RPS-51103-025, RPS-51103-027, RPS-51103-029, RPS-51103-032, RPS-51103-033, RPS-51103-034, RPS-51103-036, RPS-51103-038, RPS-51103-039, RPS-51103-040, RPS-51103-041, RPS-51103-043, RPS-51103-044, RPS-51103-046, RPS-51103-047, RPS-51103-049, RPS-51103-050,



EU RoHS

ELV and RoHS Compliant
REACH SVHC
Contains SVHC: No
Halogen-Free
Status

China RoHS



Need more information on product environmental compliance?

Email productcompliance@molex.com
 For a multiple part number RoHS Certificate of Compliance, [click here](#)

Please visit the [Contact Us](#) section for any non-product compliance questions.

Search Parts in this Series

[50351Series](#)

Mates With

[50837](#)

Use With

[51102](#) , [51163](#) , [51103](#)

Application Tooling | [FAQ](#)

Tooling specifications and manuals are found by selecting the products below. Crimp Height Specifications are then contained in the Application Tooling Specification document.

Global

Description	Product #
Extraction Tool	0638132700
Hand Crimp Tool	0638118100
T2 Terminator Die	0638505100
FineAdjust™ Applicator	0638605100

Japan

Description	Product #
-------------	-----------

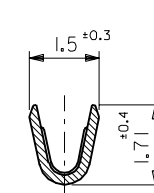
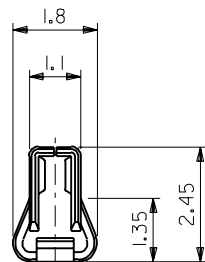
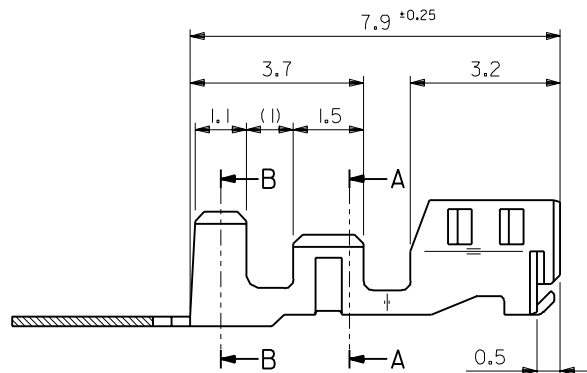
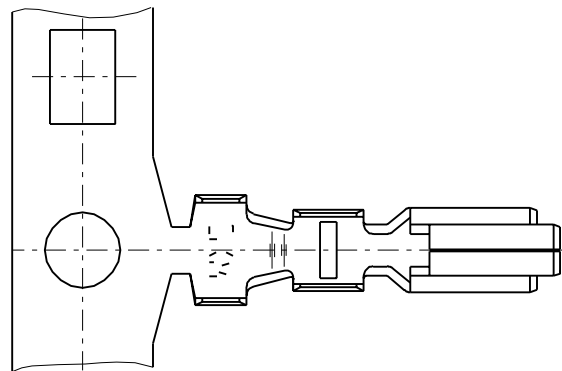
Sales Drawing

RPS-51103-051, RPS-51103-054, RPS-51103-055,
RPS-51103-056, RPS-51103-057, RPS-51163-002,
RPS-53375-001
SD-50351-8*00

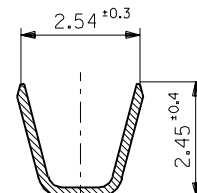
Applicator for M21 1A 0572933000
Bench Press, 22-28
AWG, for 50351
Crimp Terminal
Side-Feed Applicator 0572933200
For Full-Auto
Machine
Extraction Tool 0573096000

This document was generated on 05/24/2010

PLEASE CHECK WWW.MOLEX.COM FOR LATEST PART INFORMATION



断面 A-A
SECT. A-A



断面 B-B
SECT. B-B

注記
NOTES

- 適合ハウジング : 51102,51103 シリーズ
APPLICABLE HOUSING : 51102,51103 SERIES
- 材料 : リン青銅, 錫メッキ材 (t=0.2)
MATERIAL : PRE-TINNED PHOSPHOR BRONZE (t=0.2)

50351-8100	バラ状 LOOSE
50351-8000	連鎖状 CHAIN
ENG. NO.	端子形状 FORM

材料 MATERIAL		注記2 参照 SEE NOTE 2	
仕上げ FINISH		—H—	
角度 ANGLE	+3°	C 変更 REVISED (JCT0162)	T.N. S.A. '96/8/8
30°以上 OVER	+0.3	B 変更 REVISED (J30011)	K.T. H.H. '93/1/9
10°以上 30°未満 OVER UNDER	+0.25	A 変更 REVISED (J21012)	H.H. M.F. '92/10/30
10°未満 UNDER	+0.2	O 新規作成 PROPOSED (J20390)	H.H. Y.Y. '92/5/8
一般公差 GENERAL TOLERANCES	記号 LTR	変更内容 REVISION RECORD	DR. CHK.
			日付 DATE
			適用電線範囲 WIRE RANGE
			被覆外径 INS. RANGE
			適用電線範囲 WIRE RANGE
			適用電線範囲 WIRE RANGE

MOLEX-JAPAN CO.,LTD. 日本モレックス株式会社	
REVISE ONLY ON CAD SYSTEM	
TITLE 名称	
2.5 WIRE TO BOARD CONN. CRIMP RECEPTACLE	
DWG. NO.	REV
SD-50351-8*00	C