

**PLEASE CHECK WWW.MOLEX.COM FOR LATEST PART INFORMATION**

**Part Number:** [0510060200](#)  
**Status:** **Active**  
**Description:** 2.00mm (.079") Pitch Wire-to-Wire Plug Housing, 2 Circuits

**Documents:**

[3D Model](#) [Product Specification PS-51005-001 \(PDF\)](#)  
[Drawing \(PDF\)](#) [RoHS Certificate of Compliance \(PDF\)](#)

**Agency Certification**

CSA LR19980  
 UL E29179

**General**

Product Family Crimp Housings  
 Series [51006](#)  
 MolexKits Yes  
 Product Name N/A

**Physical**

Circuits (maximum) 2  
 Color - Resin Natural  
 Flammability 94V-0  
 Gender Male  
 Glow-Wire Compliant No  
 Lock to Mating Part None  
 Material - Resin Polyester  
 Number of Rows 1  
 Packaging Type Bag  
 Panel Mount No  
 Pitch - Mating Interface (in) 0.079 In  
 Pitch - Mating Interface (mm) 2.00 mm  
 Stackable No  
 Temperature Range - Operating -40°C to +105°C

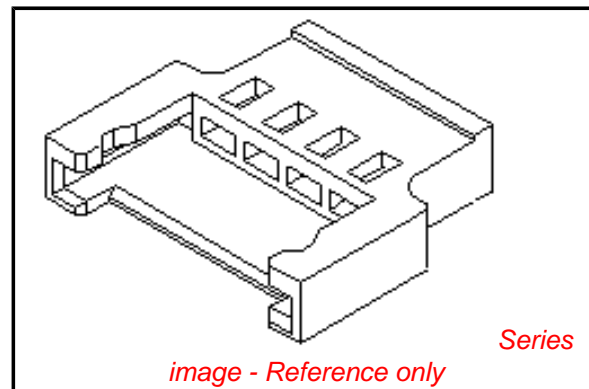
**Electrical**

Current - Maximum per Contact 2A

**Material Info**

**Reference - Drawing Numbers**

Product Specification PS-51005-001  
 Sales Drawing SD-51006-001



**EU RoHS**

**ELV and RoHS  
 Compliant**  
**REACH SVHC  
 Contains SVHC: No**  
**Halogen-Free  
 Status**

**China RoHS**



**Not Halogen-Free**  
**Need more information on product  
 environmental compliance?**

Email [productcompliance@molex.com](mailto:productcompliance@molex.com)  
 For a multiple part number RoHS Certificate of  
 Compliance, [click here](#)

Please visit the [Contact Us](#) section for any  
 non-product compliance questions.

**Search Parts in this Series**

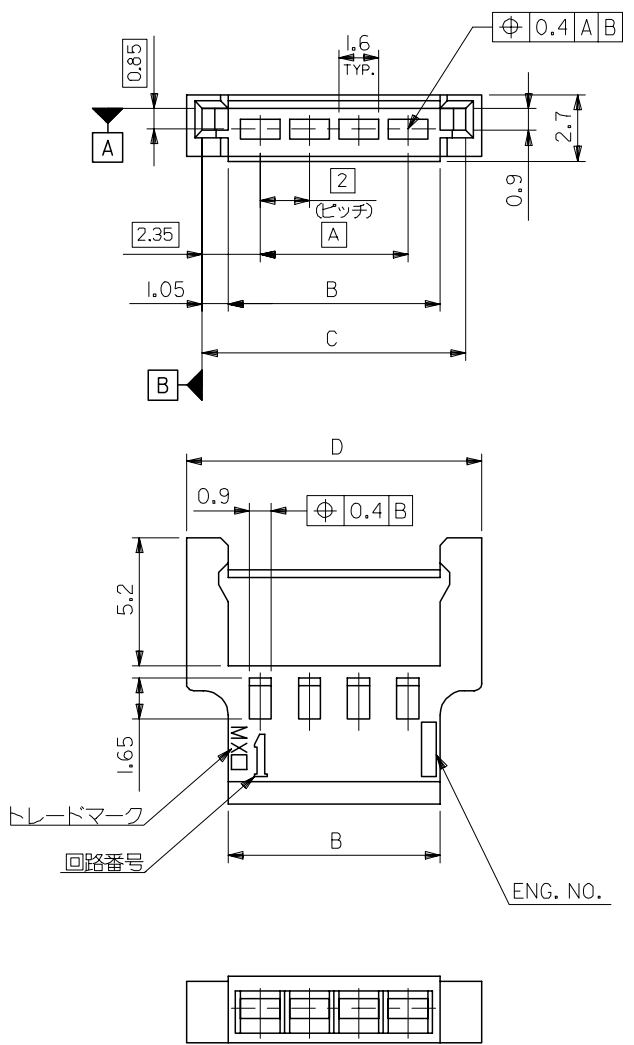
[51006Series](#)

**Mates With**

[51005 female housing](#)

**Use With**

[50012](#)



- 注記**
1. 嵌合相手 : 51005  
MATE WITH : 51005
  2. 適合ターミナル : 50012  
APPLICABLE TERMINAL : 50012
  3. ELV 及び RoHS適合品  
ELV AND RoHS COMPLIANT.

14	12.7	10.6	8	51006-0500	5
12	10.7	8.6	6	↑ - 0400	4
10	8.7	6.6	4	↓ - 0300	3
8	6.7	4.6	2	51006-0200	2
D	C	B	A	MATERIAL NO.	極数

MATERIAL  
PBTP (UL94V-0)

REVISED EC NO: J2008-0075 DRW: MNABEI 2007/07/16 CHKD: THARUYAMA 2007/07/17 APPR: NUKITA 2007/07/17	GENERAL TOLERANCES (UNLESS SPECIFIED)		DIMENSION STYLE MM ONLY		SCALE 5:1	DESIGN UNITS METRIC	THIRD ANGLE PROJECTION	
	10 UNDER	± 0.2	DRAWN BY S. MOCHIZUKI		DATE '89/08/22	TITLE 2.0 WIRE TO WIRE CONN. PLUG HOUSING		
	10 OVER 30 UNDER	± 0.25	CHECKED BY H. H.		DATE '90/05/16			
	30 OVER	± 0.3	APPROVED BY M. ENOMOTO		DATE '90/05/16	MOLEX INCORPORATED		
	ANGULAR	± 3 °	MATERIAL NO.		DOCUMENT NO. SD-51006-001			
DRAFT WHERE APPLICABLE MUST REMAIN WITHIN DIMENSIONS		SEE TABLE		SIZE A3		THIS DRAWING CONTAINS INFORMATION THAT IS PROPRIETARY TO MOLEX INCORPORATED AND SHOULD NOT BE USED WITHOUT WRITTEN PERMISSION		