

EMI Filtering TVS For Wireless Headsets.

FEATURES

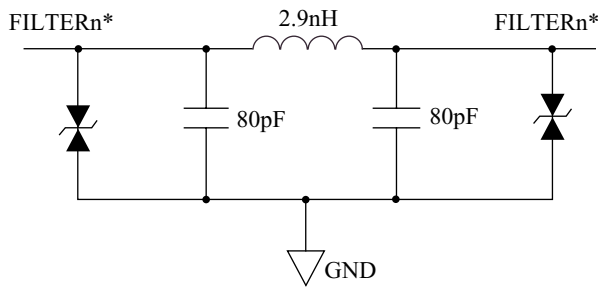
- EMI/RFI filtering.
- ESD Protection to IEC 61000-4-2 Level 4.
- Low insertion loss.
- Good attenuation of high frequency signals.
- Low clamping voltage.
- Low operating and leakage current.

MAXIMUM RATING (Ta=25 °C)

CHARACTERISTIC	SYMBOL	RATING	UNIT
Power Dissipation	*P _D	400	mW
Junction Temperature	T _j	150	°C
Storage Temperature	T _{stg}	-55 ~ 150	°C

* Total Package Power Dissipation

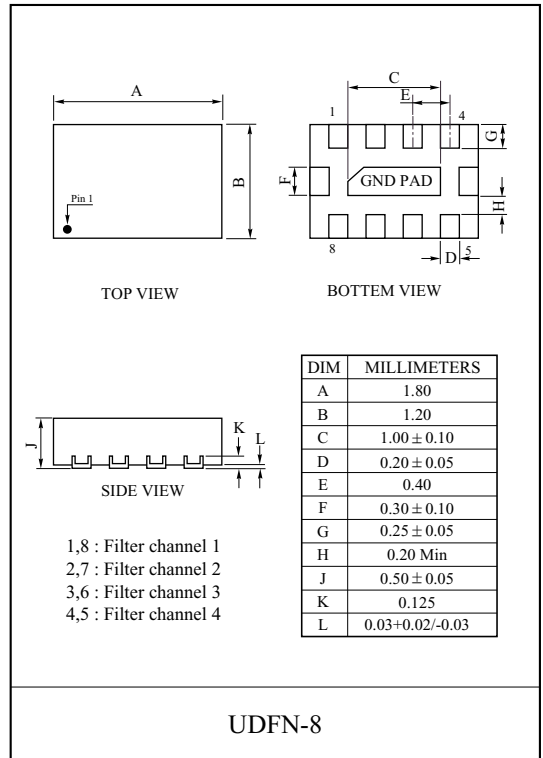
EQUIVALENT CIRCUIT



ELECTRICAL CHARACTERISTICS (Ta=25 °C)

CHARACTERISTIC	SYMBOL	TEST CONDITION	MIN.	TYP.	MAX.	UNIT
Reverse Stand-Off Voltage	V _{RWM}	-	-	-	12	V
Reverse Breakdown Voltage	V _{BR}	I _t =1mA	13.7	-	17.7	V
Reverse Leakage Current	I _R	V _{RWM} =12V	-	-	0.1	μA
Inductance	L	Between Input and Output	-	2.9	-	nH
Capacitance	C _{0V}	V _R =0V, Between I/O Pins and GND	-	250	-	pF
	C _{2.5V}	V _R =2.5V, Between I/O Pins and GND	-	160	-	
Series Resistance	R _S	Between I/O Pins and GND	-	0.28	-	Ω

TENTATIVE



MARKING

