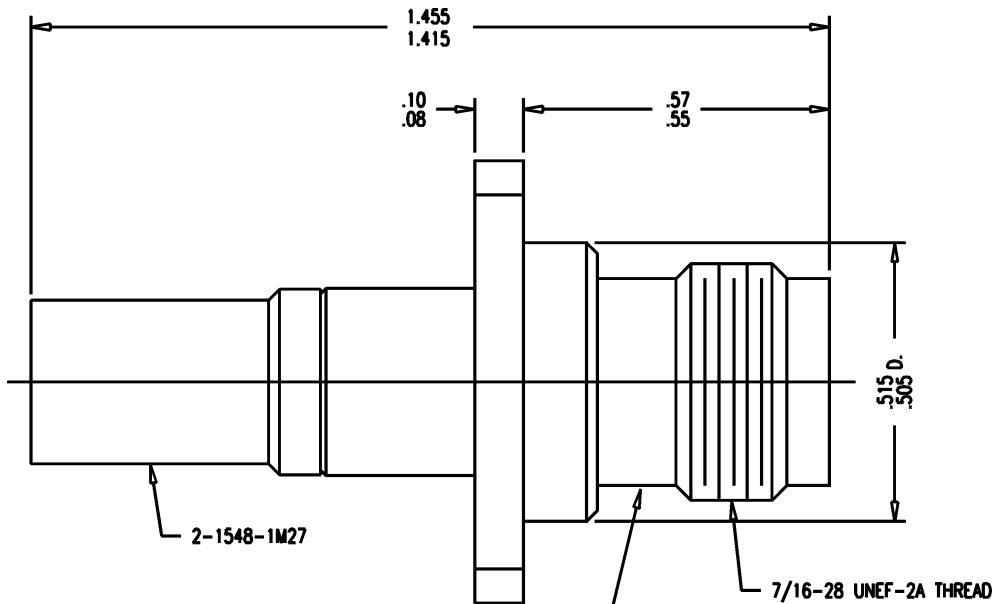
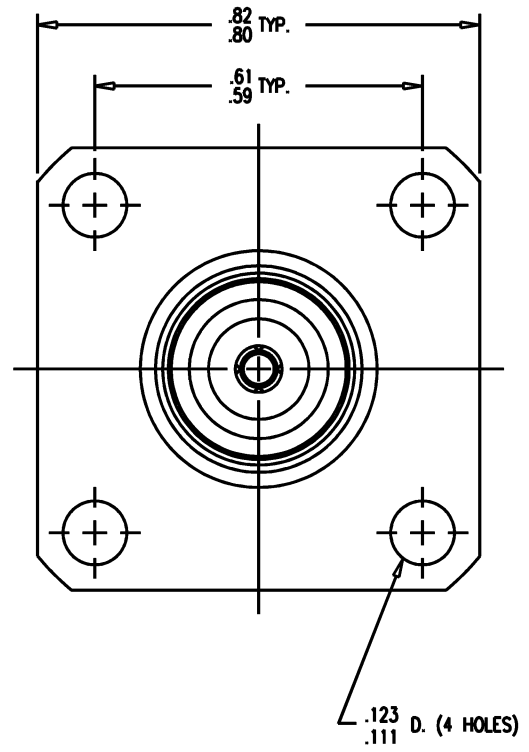


DASH NO.	M CODE	MADE FROM
----------	--------	-----------



STAMP: 91836 121-39-7
YRWK (DATE CODE)



NOTES:

1. FOR USE WITH BOEING S280W503-3 & ADAMS RUSSELL FC20Z CABLES.
2. FOR CABLING INSTRUCTIONS SEE 3-546-1.
3. FOR CRIMPING USE DIE KTH-2216.
4. INTERFACE PER MIL-STD-348, FIG. 313-2.
5. FOR USE WITH .140 MAX. PANEL.
6. CENTER CONTACT (1-507-40 M9D) SUPPLIED UNASSEMBLED.
7. MARK PACKAGE: HS5938-4
121-39-7
91836
YRWK (DATE CODE)
8. MATERIALS:
INSULATOR: TEFLON, ASTM-D4894
K-GRIP SLEEVE: ASTM-B140.
CENTER CONTACT: BER. COPPER, ASTM-B-196
ALL OTHER METAL PARTS: BRASS, ASTM-B16
9. FINISHES:
CENTER CONTACT: GOLD PLATE, PER MIL-G-45204
ALL OTHER METAL PARTS: KINGS TARNISH RESISTANT FINISH (TR-5)
10. ELECTRICAL CHARACTERISTICS:
NOMINAL IMPEDANCE: 50 OHMS
WORKING VOLTAGE: 500 VRMS
FREQUENCY RANGE: DC TO 11 GHz
VSWR: 1.30 MAX. 5-11 GHz.
INSERTION LOSS: .18 dB MAX. AT 9 GHz.
11. CONNECTOR WEIGHT: 8 GRAMS (.018 lb.).

GSD

121-39-7

REVISIONS	
ISSUE	CHANGES
0	ER 37067 AR 07/18/96
1	CN 37513 C KH 12/24/97
2	CN 38452 C TML 11/21/01
3	CN 39670 A DRK 10/23/06

WAS: ARR1207		121-39-7S
-----------------	--	-----------

SCALE 4:1	
APPROX SURFACE AREA	
USED ON	
REF: MCD. DOUGLAS HS5938-4 REV. -	
JACK, PANEL, TNC	
DRAWN AR	DATE 07/18/96
DESIGN AR	DATE 07/18/96
APPR.	DATE

KINGS
ELECTRONICS CO., INC.
ROCK HILL, SOUTH CAROLINA 29730

121-39-7

GSD